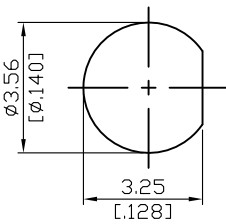
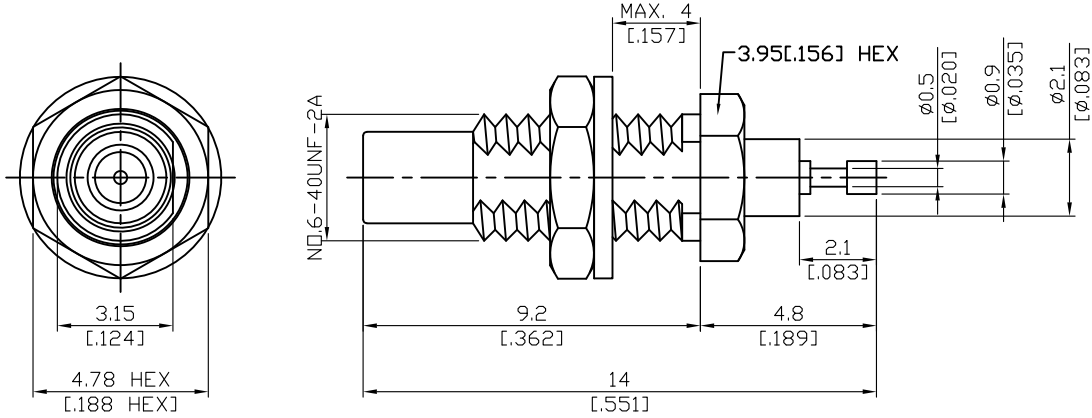


SSMC8500A-0000

SSMC Jack Bulkhead
6GHz VSWR 1.25

50Ω



MOUNTING HOLE

Parts	Material	Plating (Micro-inch)
Body	Brass	Gold 4 Over Nickel-Phosphorus Alloy 80 Over Copper 20
Insulator	Teflon	
Contact Pin	Brass	Gold 4 Over Nickel-Phosphorus Alloy 80 Over Copper 20
Lock Washer	Brass	Gold 4 Over Nickel-Phosphorus Alloy 80 Over Copper 20
Hex Nut	Brass	Gold 4 Over Nickel-Phosphorus Alloy 80 Over Copper 20

This part number complies with RoHS.

Notice: JYEBAO reserves the right to make modifications deemed appropriate.

SSMC	SSMC8500A-0000																						
<table border="0"> <tr> <td colspan="2" data-bbox="167 342 569 394">Electrical Data</td> </tr> <tr> <td data-bbox="167 400 837 439">Impedance</td> <td data-bbox="852 400 1442 439">50Ω</td> </tr> <tr> <td data-bbox="167 450 837 488">Frequency range</td> <td data-bbox="852 450 1442 488">DC to 6GHz</td> </tr> <tr> <td data-bbox="167 499 837 537">VSWR</td> <td data-bbox="852 499 1442 537">≤ 1.25(DC to 6GHz)</td> </tr> <tr> <td data-bbox="167 548 837 586">Insertion loss</td> <td data-bbox="852 548 1442 586">≤ 0.1 x √f(GHz)dB</td> </tr> <tr> <td data-bbox="167 598 837 636">Insulation resistance</td> <td data-bbox="852 598 1442 636">≥ 10000MΩ</td> </tr> <tr> <td data-bbox="167 647 837 685">Contact resistance inner conductor</td> <td data-bbox="852 647 1442 685">≤ 5mΩ</td> </tr> <tr> <td data-bbox="167 696 837 734">Contact resistance outer conductor</td> <td data-bbox="852 696 1442 734">≤ 2.5mΩ</td> </tr> <tr> <td data-bbox="167 745 837 784">Dielectric withstanding voltage (at sea level)</td> <td data-bbox="852 745 1442 784">500 V rms</td> </tr> <tr> <td data-bbox="167 795 837 833">Working voltage (at sea level)</td> <td data-bbox="852 795 1442 833">175 V rms</td> </tr> <tr> <td data-bbox="167 844 837 882">RF- leakage</td> <td data-bbox="852 844 1442 882">≥ 70dB to 1GHz</td> </tr> </table>		Electrical Data		Impedance	50Ω	Frequency range	DC to 6GHz	VSWR	≤ 1.25(DC to 6GHz)	Insertion loss	≤ 0.1 x √f(GHz)dB	Insulation resistance	≥ 10000MΩ	Contact resistance inner conductor	≤ 5mΩ	Contact resistance outer conductor	≤ 2.5mΩ	Dielectric withstanding voltage (at sea level)	500 V rms	Working voltage (at sea level)	175 V rms	RF- leakage	≥ 70dB to 1GHz
Electrical Data																							
Impedance	50Ω																						
Frequency range	DC to 6GHz																						
VSWR	≤ 1.25(DC to 6GHz)																						
Insertion loss	≤ 0.1 x √f(GHz)dB																						
Insulation resistance	≥ 10000MΩ																						
Contact resistance inner conductor	≤ 5mΩ																						
Contact resistance outer conductor	≤ 2.5mΩ																						
Dielectric withstanding voltage (at sea level)	500 V rms																						
Working voltage (at sea level)	175 V rms																						
RF- leakage	≥ 70dB to 1GHz																						
<table border="0"> <tr> <td colspan="2" data-bbox="167 938 569 990">Mechanical Data</td> </tr> <tr> <td data-bbox="167 996 837 1034">Recommended coupling nut torque</td> <td data-bbox="852 996 1442 1034">1.8 to 2 inch lbs</td> </tr> <tr> <td data-bbox="167 1046 837 1084">Coupling proof torque</td> <td data-bbox="852 1046 1442 1084">2.6 inch lbs</td> </tr> <tr> <td data-bbox="167 1095 837 1133">Contact captivation-axial</td> <td data-bbox="852 1095 1442 1133">≥ 1.8 lbs</td> </tr> <tr> <td data-bbox="167 1144 837 1182">Durability (mating)</td> <td data-bbox="852 1144 1442 1182">≥ 500</td> </tr> </table>		Mechanical Data		Recommended coupling nut torque	1.8 to 2 inch lbs	Coupling proof torque	2.6 inch lbs	Contact captivation-axial	≥ 1.8 lbs	Durability (mating)	≥ 500												
Mechanical Data																							
Recommended coupling nut torque	1.8 to 2 inch lbs																						
Coupling proof torque	2.6 inch lbs																						
Contact captivation-axial	≥ 1.8 lbs																						
Durability (mating)	≥ 500																						
<table border="0"> <tr> <td colspan="2" data-bbox="167 1292 569 1344">Environmental Data</td> </tr> <tr> <td data-bbox="167 1350 837 1388">Temperature range</td> <td data-bbox="852 1350 1442 1388">-65°C to +165°C</td> </tr> <tr> <td data-bbox="167 1400 837 1438">Thermal shock</td> <td data-bbox="852 1400 1442 1438">MIL-STD-202, Method 107, Condition B</td> </tr> <tr> <td data-bbox="167 1449 837 1487">Moisture resistance</td> <td data-bbox="852 1449 1442 1487">MIL-STD-202, Method 106</td> </tr> <tr> <td data-bbox="167 1498 837 1536">Corrosion</td> <td data-bbox="852 1498 1442 1536">MIL-STD-202, Method 101, Condition B</td> </tr> <tr> <td data-bbox="167 1547 837 1585">RoHS</td> <td data-bbox="852 1547 1442 1585">Compliant</td> </tr> </table>		Environmental Data		Temperature range	-65°C to +165°C	Thermal shock	MIL-STD-202, Method 107, Condition B	Moisture resistance	MIL-STD-202, Method 106	Corrosion	MIL-STD-202, Method 101, Condition B	RoHS	Compliant										
Environmental Data																							
Temperature range	-65°C to +165°C																						
Thermal shock	MIL-STD-202, Method 107, Condition B																						
Moisture resistance	MIL-STD-202, Method 106																						
Corrosion	MIL-STD-202, Method 101, Condition B																						
RoHS	Compliant																						
<table border="0"> <tr> <td colspan="2" data-bbox="167 1646 569 1697">Tooling</td> </tr> </table>		Tooling																					
Tooling																							

Notice: JYEBAO reserves the right to make modifications deemed appropriate.

SSMC8500A-0000

