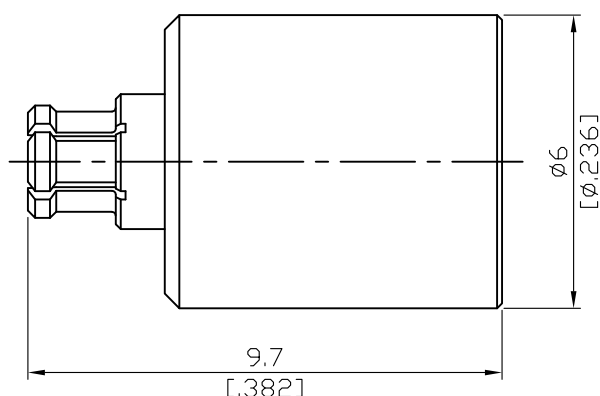


SMPM8900-0040-1.2

SMPM Jack Termination 1W
40GHz VSWR 1.2

50Ω



1W average power from -40°C to +70°C linearly derated to 0.5W at 165°C

Parts	Material	Plating (Micro-inch)
Body	Beryllium Copper	Gold 4 Over Nickel-Phosphorus Alloy 80 Over Copper 20
Insulator	PPO	
Contact Pin	Beryllium Copper	Gold 4 Over Nickel-Phosphorus Alloy 80 Over Copper 20
Ferrule	Brass	Gold 4 Over Nickel-Phosphorus Alloy 80 Over Copper 20
Cover	Brass	Gold 4 Over Nickel-Phosphorus Alloy 80 Over Copper 20

This part number complies with RoHS.

Notice: JYEBAO reserves the right to make modifications deemed appropriate.

SMPM		SMPM8900-0040-1.2																			
<div>Interface</div> <div>MIL-STD-348B</div>																					
<div>Electrical Data</div> <div><table><tr><td>Impedance</td><td>50Ω</td></tr><tr><td>Frequency range</td><td>DC to 40GHz</td></tr><tr><td>VSWR</td><td>≤ 1.2 (DC to 40GHz)</td></tr><tr><td>Insertion loss</td><td>≤ 0.1 x √f(GHz) dB</td></tr><tr><td>Insulation resistance</td><td>≥ 5000 MΩ</td></tr><tr><td>Contact resistance inner conductor</td><td>≤ 6mΩ</td></tr><tr><td>Contact resistance outer conductor</td><td>≤ 2mΩ</td></tr><tr><td>Dielectric withstanding voltage (at sea level)</td><td>325</td></tr></table></div>					Impedance	50Ω	Frequency range	DC to 40GHz	VSWR	≤ 1.2 (DC to 40GHz)	Insertion loss	≤ 0.1 x √f(GHz) dB	Insulation resistance	≥ 5000 MΩ	Contact resistance inner conductor	≤ 6mΩ	Contact resistance outer conductor	≤ 2mΩ	Dielectric withstanding voltage (at sea level)	325	
Impedance	50Ω																				
Frequency range	DC to 40GHz																				
VSWR	≤ 1.2 (DC to 40GHz)																				
Insertion loss	≤ 0.1 x √f(GHz) dB																				
Insulation resistance	≥ 5000 MΩ																				
Contact resistance inner conductor	≤ 6mΩ																				
Contact resistance outer conductor	≤ 2mΩ																				
Dielectric withstanding voltage (at sea level)	325																				
<div>Mechanical Data</div> <div><table><tr><td></td><td>Full Detent</td><td>Smooth bore</td><td></td></tr><tr><td>Engagement force</td><td>3.5 typical</td><td>1.5 typical</td><td>lbs</td></tr><tr><td>Disengagement force</td><td>5.0 typical</td><td>1.5 typical</td><td>lbs</td></tr><tr><td>Durability (mating)</td><td>≥ 100</td><td>≥ 1000</td><td></td></tr><tr><td>Contact pin captivation</td><td colspan="3">≥ 1.5lbs</td></tr></table></div>			Full Detent	Smooth bore		Engagement force	3.5 typical	1.5 typical	lbs	Disengagement force	5.0 typical	1.5 typical	lbs	Durability (mating)	≥ 100	≥ 1000		Contact pin captivation	≥ 1.5lbs		
	Full Detent	Smooth bore																			
Engagement force	3.5 typical	1.5 typical	lbs																		
Disengagement force	5.0 typical	1.5 typical	lbs																		
Durability (mating)	≥ 100	≥ 1000																			
Contact pin captivation	≥ 1.5lbs																				
<div>Environmental Data</div> <div><table><tr><td>Temperature range</td><td>-40°C to +105°C</td></tr><tr><td>Thermal shock</td><td>MIL-STD-202, Method 107, Condition B</td></tr><tr><td>Moisture resistance</td><td>MIL-STD-202, Method 106</td></tr><tr><td>Corrosion</td><td>MIL-STD-202, Method 101, Condition B</td></tr><tr><td>RoHS</td><td>Compliant</td></tr></table></div>		Temperature range	-40°C to +105°C	Thermal shock	MIL-STD-202, Method 107, Condition B	Moisture resistance	MIL-STD-202, Method 106	Corrosion	MIL-STD-202, Method 101, Condition B	RoHS	Compliant										
Temperature range	-40°C to +105°C																				
Thermal shock	MIL-STD-202, Method 107, Condition B																				
Moisture resistance	MIL-STD-202, Method 106																				
Corrosion	MIL-STD-202, Method 101, Condition B																				
RoHS	Compliant																				
<div>Tooling</div>																					

Notice: JYEBAO reserves the right to make modifications deemed appropriate.

SMPM8900-0040-1.2

