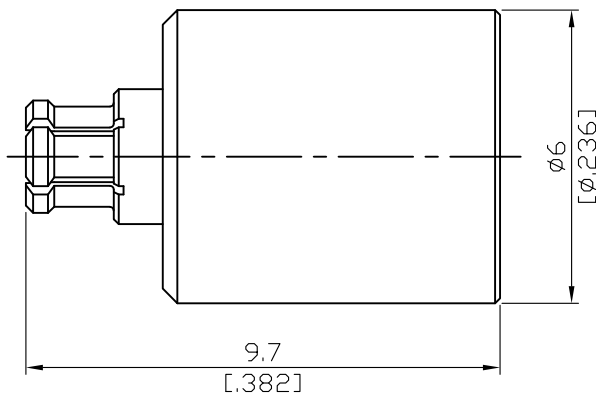


SMPM8900-0006

SMPM Jack Termination 1W
6GHz VSWR 1.2

50Ω



1W average power from -40°C to +70°C linearly derated to 0.5W at 165°C

Parts	Material	Plating (Micro-inch)
Body	Beryllium Copper	Gold 4 Over Nickel-Phosphorus Alloy 80 Over Copper 20
Insulator	PPO	
Contact Pin	Beryllium Copper	Gold 4 Over Nickel-Phosphorus Alloy 80 Over Copper 20
Ferrule	Brass	Gold 4 Over Nickel-Phosphorus Alloy 80 Over Copper 20
Cover	Brass	Gold 4 Over Nickel-Phosphorus Alloy 80 Over Copper 20

This part number complies with RoHS.

Notice: JYEBAO reserves the right to make modifications deemed appropriate.

SMPM	SMPM8900-0006																						
<div data-bbox="113 331 513 376" style="border: 1px solid black; padding: 2px;">Interface</div> <p>MIL-STD-348B</p>																							
<div data-bbox="113 495 513 539" style="border: 1px solid black; padding: 2px;">Electrical Data</div> <table border="0" style="width: 100%;"> <tr> <td style="width: 50%;">Impedance</td> <td style="width: 50%;">50Ω</td> </tr> <tr> <td>Frequency range</td> <td>DC to 6GHz</td> </tr> <tr> <td>VSWR</td> <td>≤ 1.2 (DC to 6GHz)</td> </tr> <tr> <td>Insertion loss</td> <td>≤ 0.1 x √f(GHz) dB</td> </tr> <tr> <td>Insulation resistance</td> <td>≥ 5000 MΩ</td> </tr> <tr> <td>Contact resistance inner conductor</td> <td>≤ 6mΩ</td> </tr> <tr> <td>Contact resistance outer conductor</td> <td>≤ 2mΩ</td> </tr> <tr> <td>Dielectric withstanding voltage (at sea level)</td> <td>325</td> </tr> </table>				Impedance	50Ω	Frequency range	DC to 6GHz	VSWR	≤ 1.2 (DC to 6GHz)	Insertion loss	≤ 0.1 x √f(GHz) dB	Insulation resistance	≥ 5000 MΩ	Contact resistance inner conductor	≤ 6mΩ	Contact resistance outer conductor	≤ 2mΩ	Dielectric withstanding voltage (at sea level)	325				
Impedance	50Ω																						
Frequency range	DC to 6GHz																						
VSWR	≤ 1.2 (DC to 6GHz)																						
Insertion loss	≤ 0.1 x √f(GHz) dB																						
Insulation resistance	≥ 5000 MΩ																						
Contact resistance inner conductor	≤ 6mΩ																						
Contact resistance outer conductor	≤ 2mΩ																						
Dielectric withstanding voltage (at sea level)	325																						
<div data-bbox="113 1021 513 1088" style="border: 1px solid black; padding: 2px;">Mechanical Data</div> <table border="1" style="width: 100%; border-collapse: collapse;"> <thead> <tr> <th style="width: 50%;"></th> <th style="width: 25%;">Full Detent</th> <th style="width: 25%;">Smooth bore</th> <th style="width: 10%;"></th> </tr> </thead> <tbody> <tr> <td>Engagement force</td> <td>3.5 typical</td> <td>1.5 typical</td> <td>lbs</td> </tr> <tr> <td>Disengagement force</td> <td>5.0 typical</td> <td>1.5 typical</td> <td>lbs</td> </tr> <tr> <td>Durability (mating)</td> <td>≥ 100</td> <td>≥ 1000</td> <td></td> </tr> <tr> <td>Contact pin captivation</td> <td colspan="3" style="text-align: center;">≥ 1.5lbs</td> </tr> </tbody> </table>					Full Detent	Smooth bore		Engagement force	3.5 typical	1.5 typical	lbs	Disengagement force	5.0 typical	1.5 typical	lbs	Durability (mating)	≥ 100	≥ 1000		Contact pin captivation	≥ 1.5lbs		
	Full Detent	Smooth bore																					
Engagement force	3.5 typical	1.5 typical	lbs																				
Disengagement force	5.0 typical	1.5 typical	lbs																				
Durability (mating)	≥ 100	≥ 1000																					
Contact pin captivation	≥ 1.5lbs																						
<div data-bbox="113 1357 513 1413" style="border: 1px solid black; padding: 2px;">Environmental Data</div> <table border="0" style="width: 100%;"> <tr> <td style="width: 50%;">Temperature range</td> <td style="width: 50%;">-40°C to +105°C</td> </tr> <tr> <td>Thermal shock</td> <td>MIL-STD-202, Method 107, Condition B</td> </tr> <tr> <td>Moisture resistance</td> <td>MIL-STD-202, Method 106</td> </tr> <tr> <td>Corrosion</td> <td>MIL-STD-202, Method 101, Condition B</td> </tr> <tr> <td>RoHS</td> <td>Compliant</td> </tr> </table>				Temperature range	-40°C to +105°C	Thermal shock	MIL-STD-202, Method 107, Condition B	Moisture resistance	MIL-STD-202, Method 106	Corrosion	MIL-STD-202, Method 101, Condition B	RoHS	Compliant										
Temperature range	-40°C to +105°C																						
Thermal shock	MIL-STD-202, Method 107, Condition B																						
Moisture resistance	MIL-STD-202, Method 106																						
Corrosion	MIL-STD-202, Method 101, Condition B																						
RoHS	Compliant																						
<div data-bbox="113 1715 513 1760" style="border: 1px solid black; padding: 2px;">Tooling</div>																							

Notice: JYEBAO reserves the right to make modifications deemed appropriate.