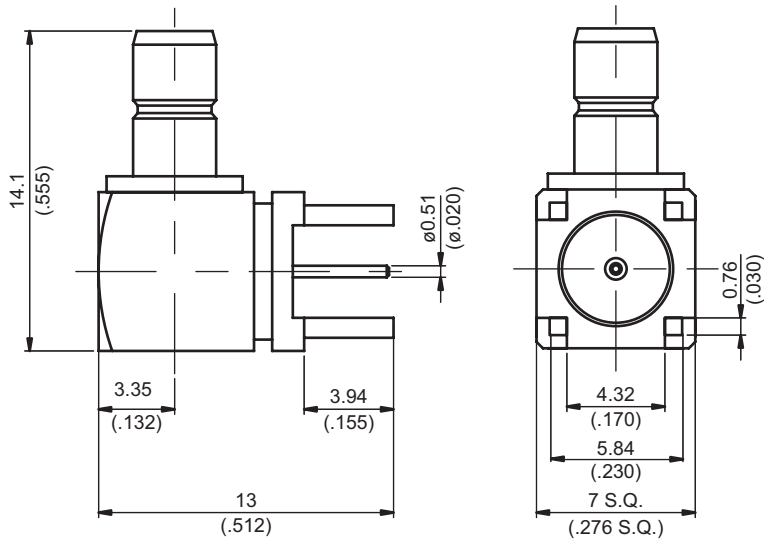
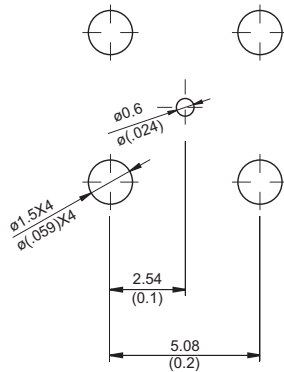


SMB8400-9075

SMB Jack PCB Mount Right Angle **75Ω**
With Round Contact (Φ0.51); 2GHz VSWR 1.2



MOUNTING HOLE :



NOTE: 75Ω MINI-SMB INTERFACE

Parts	Material	Plating (Micro-inch)
Cover	Brass	Gold 4 Over Nickel-Phosphorus Alloy 80 Over Copper 20
Contact Pin	Brass	Gold 4 Over Nickel-Phosphorus Alloy 80 Over Copper 20
Insulator	Teflon	
Housing	Brass	Gold 4 Over Nickel-Phosphorus Alloy 80 Over Copper 20
Body	Brass	Gold 4 Over Nickel-Phosphorus Alloy 80 Over Copper 20

Weight: 3.36 g

This part number complies with RoHS.

Notice: JYEBAO reserves the right to make modifications deemed appropriate.

SMB	SMB8400-9075																				
<table border="0"> <tr> <td colspan="2" data-bbox="167 344 569 389">Electrical Data</td> </tr> <tr> <td data-bbox="167 405 837 439">Impedance</td> <td data-bbox="853 405 1136 439">75Ω</td> </tr> <tr> <td data-bbox="167 454 837 488">Frequency range</td> <td data-bbox="853 454 1136 488">DC to 2GHz</td> </tr> <tr> <td data-bbox="167 504 837 537">VSWR</td> <td data-bbox="853 504 1136 537">≤ 1.2 (DC to 2GHz)</td> </tr> <tr> <td data-bbox="167 553 837 586">Insertion loss</td> <td data-bbox="853 553 1136 586">≤ 0.1 x √f(GHz)dB</td> </tr> <tr> <td data-bbox="167 602 837 636">Insulation resistance</td> <td data-bbox="853 602 1136 636">≥ 10000MΩ</td> </tr> <tr> <td data-bbox="167 651 837 685">Contact resistance inner conductor</td> <td data-bbox="853 651 1136 685">≤ 5mΩ</td> </tr> <tr> <td data-bbox="167 701 837 734">Contact resistance outer conductor</td> <td data-bbox="853 701 1136 734">≤ 2.5mΩ</td> </tr> <tr> <td data-bbox="167 750 837 784">Dielectric withstanding voltage (at sea level)</td> <td data-bbox="853 750 1136 784">750 V rms</td> </tr> <tr> <td data-bbox="167 799 837 833">Working voltage (at sea level)</td> <td data-bbox="853 799 1136 833">250 V rms</td> </tr> </table>		Electrical Data		Impedance	75Ω	Frequency range	DC to 2GHz	VSWR	≤ 1.2 (DC to 2GHz)	Insertion loss	≤ 0.1 x √f(GHz)dB	Insulation resistance	≥ 10000MΩ	Contact resistance inner conductor	≤ 5mΩ	Contact resistance outer conductor	≤ 2.5mΩ	Dielectric withstanding voltage (at sea level)	750 V rms	Working voltage (at sea level)	250 V rms
Electrical Data																					
Impedance	75Ω																				
Frequency range	DC to 2GHz																				
VSWR	≤ 1.2 (DC to 2GHz)																				
Insertion loss	≤ 0.1 x √f(GHz)dB																				
Insulation resistance	≥ 10000MΩ																				
Contact resistance inner conductor	≤ 5mΩ																				
Contact resistance outer conductor	≤ 2.5mΩ																				
Dielectric withstanding voltage (at sea level)	750 V rms																				
Working voltage (at sea level)	250 V rms																				
<table border="0"> <tr> <td colspan="2" data-bbox="167 938 569 983">Mechanical Data</td> </tr> <tr> <td data-bbox="167 999 837 1032">Disengagement force</td> <td data-bbox="853 999 1136 1032">1.8 to 14.2 lbs</td> </tr> <tr> <td data-bbox="167 1048 837 1081">Engagement force</td> <td data-bbox="853 1048 1136 1081">1.8 to 14.2 lbs</td> </tr> <tr> <td data-bbox="167 1097 837 1131">Contact captivation-axial</td> <td data-bbox="853 1097 1136 1131">≥ 4 lbs</td> </tr> <tr> <td data-bbox="167 1146 837 1180">Durability (mating)</td> <td data-bbox="853 1146 1136 1180">≥ 500</td> </tr> </table>		Mechanical Data		Disengagement force	1.8 to 14.2 lbs	Engagement force	1.8 to 14.2 lbs	Contact captivation-axial	≥ 4 lbs	Durability (mating)	≥ 500										
Mechanical Data																					
Disengagement force	1.8 to 14.2 lbs																				
Engagement force	1.8 to 14.2 lbs																				
Contact captivation-axial	≥ 4 lbs																				
Durability (mating)	≥ 500																				
<table border="0"> <tr> <td colspan="2" data-bbox="167 1290 569 1335">Environmental Data</td> </tr> <tr> <td data-bbox="167 1350 837 1384">Temperature range</td> <td data-bbox="853 1350 1136 1384">-65°C to +165°C</td> </tr> <tr> <td data-bbox="167 1400 837 1433">Thermal shock</td> <td data-bbox="853 1400 1136 1433">MIL-STD-202, Method 107, Condition B</td> </tr> <tr> <td data-bbox="167 1449 837 1482">Moisture resistance</td> <td data-bbox="853 1449 1136 1482">MIL-STD-202, Method 106</td> </tr> <tr> <td data-bbox="167 1498 837 1532">Corrosion</td> <td data-bbox="853 1498 1136 1532">MIL-STD-202, Method 101, Condition B</td> </tr> <tr> <td data-bbox="167 1547 837 1581">RoHS</td> <td data-bbox="853 1547 1136 1581">Compliant</td> </tr> </table>		Environmental Data		Temperature range	-65°C to +165°C	Thermal shock	MIL-STD-202, Method 107, Condition B	Moisture resistance	MIL-STD-202, Method 106	Corrosion	MIL-STD-202, Method 101, Condition B	RoHS	Compliant								
Environmental Data																					
Temperature range	-65°C to +165°C																				
Thermal shock	MIL-STD-202, Method 107, Condition B																				
Moisture resistance	MIL-STD-202, Method 106																				
Corrosion	MIL-STD-202, Method 101, Condition B																				
RoHS	Compliant																				
<table border="0"> <tr> <td colspan="2" data-bbox="167 1644 569 1688">Tooling</td> </tr> </table>		Tooling																			
Tooling																					

Notice: JYEBAO reserves the right to make modifications deemed appropriate.

SMB8400-9075

S11

