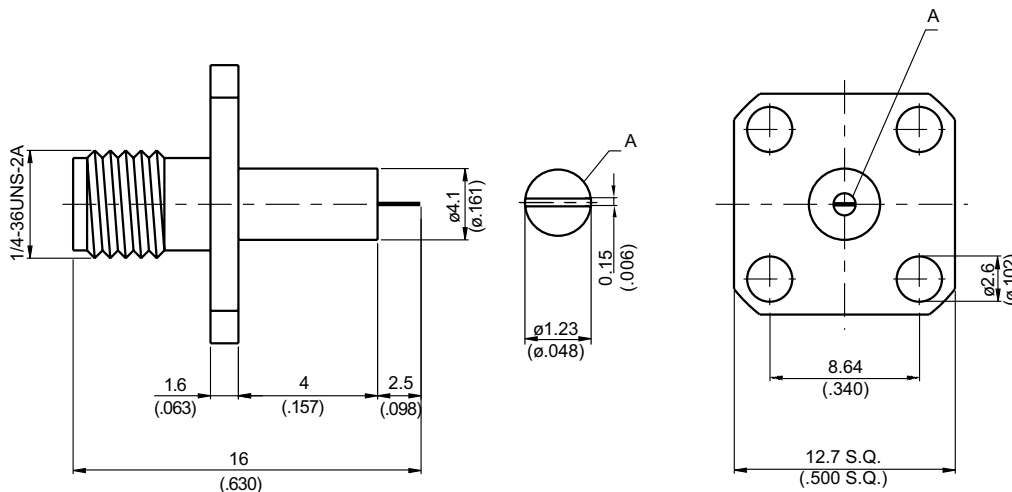
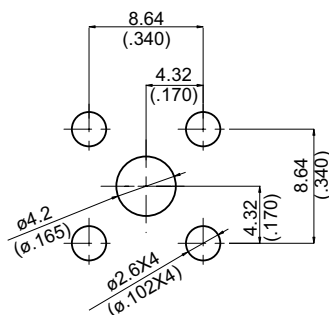


SMA864PP1-0000

SMA Jack SQ 12.7mm 4 hole Flange With Tab Contact
(W=1.23;T=0.15;L=2.5), PTFE L=4; 10GHz VSWR 1.2 **50Ω**



MOUNTING HOLE :



Parts	Material	Plating (Micro-inch)
Contact Pin	Beryllium Copper	Gold 4 Over Nickel-Phosphorus Alloy 80 Over Copper 20
Insulator	Teflon	
Body	Brass	Gold 4 Over Nickel-Phosphorus Alloy 80 Over Copper 20

Weight: 2.67 g

This part number complies with RoHS.

Notice: JYEBAO reserves the right to make modifications deemed appropriate.

SMA	SMA864PP1-0000
<div>Interface</div> MIL-STD-348B Mechanically compatible with 2.92 & 3.5	
<div>Electrical Data</div> Impedance 50Ω Frequency range DC to 10GHz VSWR ≤ 1.2 (DC to 10GHz) Insertion loss $\leq 0.04 \times \sqrt{f}$ (GHz) dB Insulation resistance $\geq 5000\text{M}\Omega$ Contact resistance inner conductor $\leq 3\text{m}\Omega$ Contact resistance outer conductor $\leq 2\text{m}\Omega$ Dielectric withstanding voltage (at sea level) 1500 V rms Working voltage (at sea level) 500 V rms	
<div>Mechanical Data</div> Recommended coupling nut torque 4 inch lbs Coupling proof torque 5.3 inch lbs Coupling nut retention force ≥ 60.7 lbs Contact Captivation-axial ≥ 6.1 lbs Durability (mating) ≥ 100	
<div>Environmental Data</div> Temperature range -65°C to +165°C Thermal shock MIL-STD-202, Method 107, Condition B Moisture resistance MIL-STD-202, Method 106 Corrosion MIL-STD-202, Method 101, Condition B RoHS Compliant	
<div>Tooling</div>	

Notice: JYEBAO reserves the right to make modifications deemed appropriate.

SMA864PP-000

