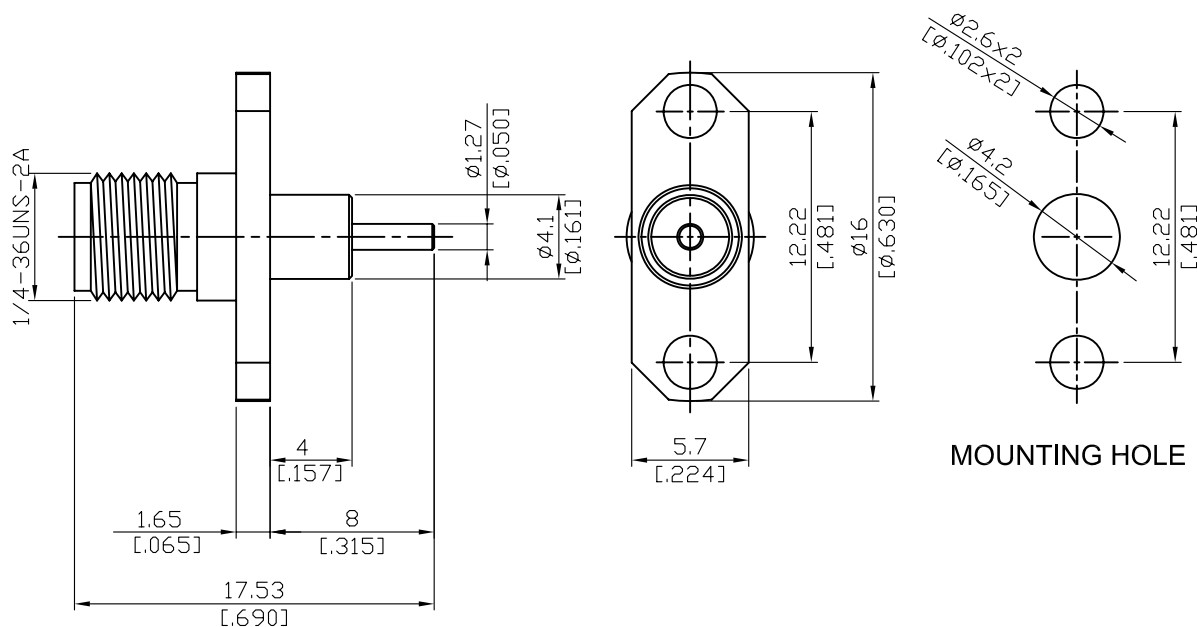


SMA862HB-0000	SMA jack 2 hole 16φ flange with round contact (Φ1.27;L=4); PTFE L=4; 18GHz VSWR1.2	50Ω
---------------	---	-----



Parts	Material	Plating ( Micro-inch )
Body	Brass	Gold 4 Over Nickel-Phosphorus Alloy 80 Over Copper 20
Insulator	Teflon	
Contact Pin	Beryllium Copper	Gold 4 Over Nickel-Phosphorus Alloy 80 Over Copper 20

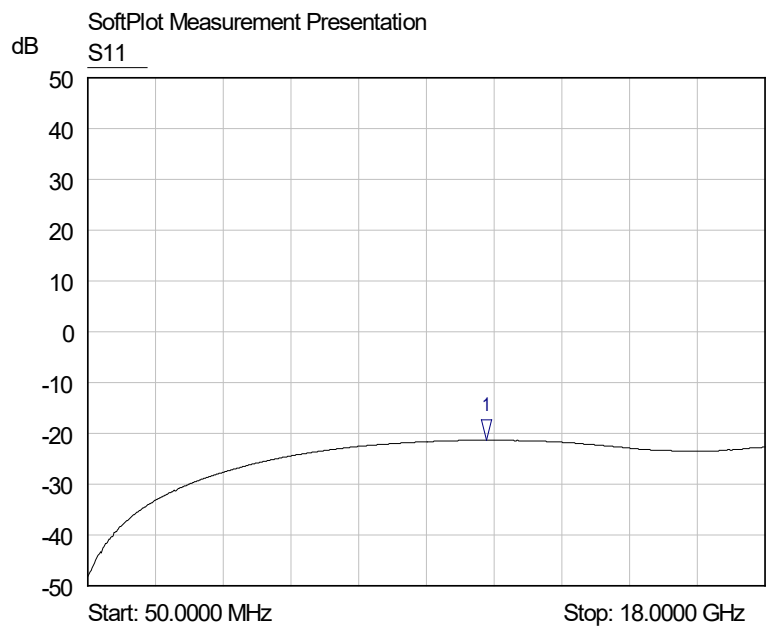
This part number complies with RoHS.  
 Notice: JYEBAO reserves the right to make modifications deemed appropriate.

SMA	SMA862HB-0000
<div style="border: 1px solid black; padding: 2px; margin-bottom: 5px;">Interface</div> MIL-STD-348B Mechanically compatible with <span style="float: right;">2.92 &amp; 3.5</span>	
<div style="border: 1px solid black; padding: 2px; margin-bottom: 5px;">Electrical Data</div> Impedance <span style="float: right;">50Ω</span> Frequency range <span style="float: right;">DC to 18GHz</span> VSWR <span style="float: right;">≤ 1.2 (DC to 18GHz)</span> Insertion loss <span style="float: right;">≤ 0.04 x √f(GHz) dB</span> Insulation resistance <span style="float: right;">≥ 5000MΩ</span> Contact resistance inner conductor <span style="float: right;">≤ 3mΩ</span> Contact resistance outer conductor <span style="float: right;">≤ 2mΩ</span> Dielectric withstanding voltage (at sea level) <span style="float: right;">1500 V rms</span> Working voltage (at sea level) <span style="float: right;">500 V rms</span>	
<div style="border: 1px solid black; padding: 2px; margin-bottom: 5px;">Mechanical Data</div> Recommended coupling nut torque <span style="float: right;">4 inch lbs</span> Coupling proof torque <span style="float: right;">5.3 inch lbs</span> Contact Captivation-axial <span style="float: right;">≥ 6.1 lbs</span> Durability (mating) <span style="float: right;">≥ 100</span>	
<div style="border: 1px solid black; padding: 2px; margin-bottom: 5px;">Environmental Data</div> Temperature range <span style="float: right;">-65°C to +165°C</span> Thermal shock <span style="float: right;">MIL-STD-202, Method 107, Condition B</span> Moisture resistance <span style="float: right;">MIL-STD-202, Method 106</span> Corrosion <span style="float: right;">MIL-STD-202, Method 101, Condition B</span> RoHS <span style="float: right;">Compliant</span>	
<div style="border: 1px solid black; padding: 2px; margin-bottom: 5px;">Tooling</div>	

Notice: JYEBAO reserves the right to make modifications deemed appropriate.

# SMA862HB-0000

S11



1 S11  
▽ 10.6088 GHz  
-21.29 dB