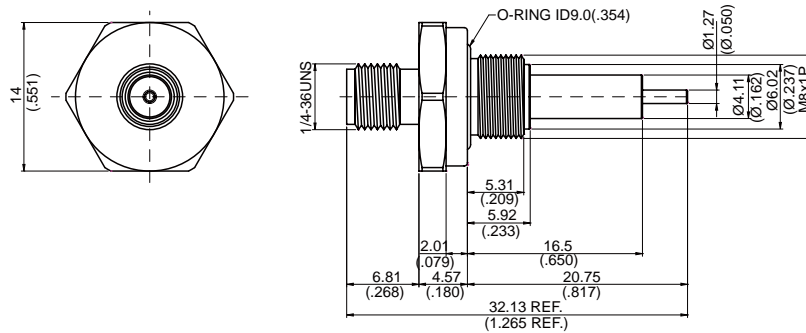


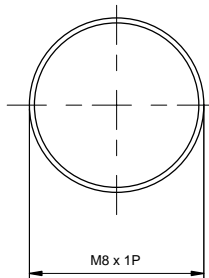
SMA85PW-0000/HS

SMA Jack Bulkhead With Round Contact (Φ1.27;L=4.25)  
PTFE L=10.58; Hermetic; 15.5GHz VSWR 1.2

50Ω



**MOUNTING HOLE:**



Hermetic  $1 \times 10^{-6}$  cc/sec at 1 atm of helium

Center contact pin captivation : 6 lbs min axial and 4 in x oz min radiall

| Parts       | Material         | Plating (Micro-inch)                                  |
|-------------|------------------|---|
| Gasket      | Silicon          |   |
| Barrel      | Brass            | Gold 4 Over Nickel-Phosphorus Alloy 80 Over Copper 20 |
| Contact Pin | Beryllium Copper | Gold 4 Over Nickel-Phosphorus Alloy 80 Over Copper 20 |
| Insulator   | Teflon           |   |
| Body        | Brass            | Gold 4 Over Nickel-Phosphorus Alloy 80 Over Copper 20 |

This part number complies with RoHS.

**Notice: JYEBAO reserves the right to make modifications deemed appropriate.**

| SMA  | SMA85PW-0000/HS |
|--|-----------------|
| <div data-bbox="172 387 571 432" style="border: 1px solid black; padding: 2px;">Interface</div> <p>MIL-STD-348B</p> <p>Mechanically compatible with 2.92 &amp; 3.5</p>   |                 |
| <div data-bbox="172 555 571 600" style="border: 1px solid black; padding: 2px;">Electrical Data</div> <p>Impedance 50Ω</p> <p>Frequency range DC to 15.5GHz</p> <p>VSWR <math>\leq 1.2</math> (DC to 15.5GHz)</p> <p>Insertion loss <math>\leq 0.04 \times \sqrt{f(\text{GHz})}</math> dB</p> <p>Insulation resistance <math>\geq 5000\text{M}\Omega</math></p> <p>Contact resistance inner conductor <math>\leq 3\text{m}\Omega</math></p> <p>Contact resistance outer conductor <math>\leq 2\text{m}\Omega</math></p> <p>Dielectric withstanding voltage (at sea level) 1500 V rms</p> <p>Working voltage (at sea level) 500 V rms</p> |                 |
| <div data-bbox="172 1093 571 1137" style="border: 1px solid black; padding: 2px;">Mechanical Data</div> <p>Recommended coupling nut torque 4 inch lbs</p> <p>Coupling proof torque 5.3 inch lbs</p> <p>Coupling nut retention force <math>\geq 60.7</math> lbs</p> <p>Contact Captivation-axial <math>\geq 6.1</math> lbs</p> <p>Durability (mating) <math>\geq 100</math></p>   |                 |
| <div data-bbox="172 1406 571 1451" style="border: 1px solid black; padding: 2px;">Environmental Data</div> <p>Temperature range -65°C to +165°C</p> <p>Thermal shock MIL-STD-202, Method 107, Condition B</p> <p>Moisture resistance MIL-STD-202, Method 106</p> <p>Corrosion MIL-STD-202, Method 101, Condition B</p> <p>RoHS Compliant</p>   |                 |
| <div data-bbox="172 1753 571 1798" style="border: 1px solid black; padding: 2px;">Tooling</div>  |                 |

Notice: JYEBAO reserves the right to make modifications deemed appropriate.