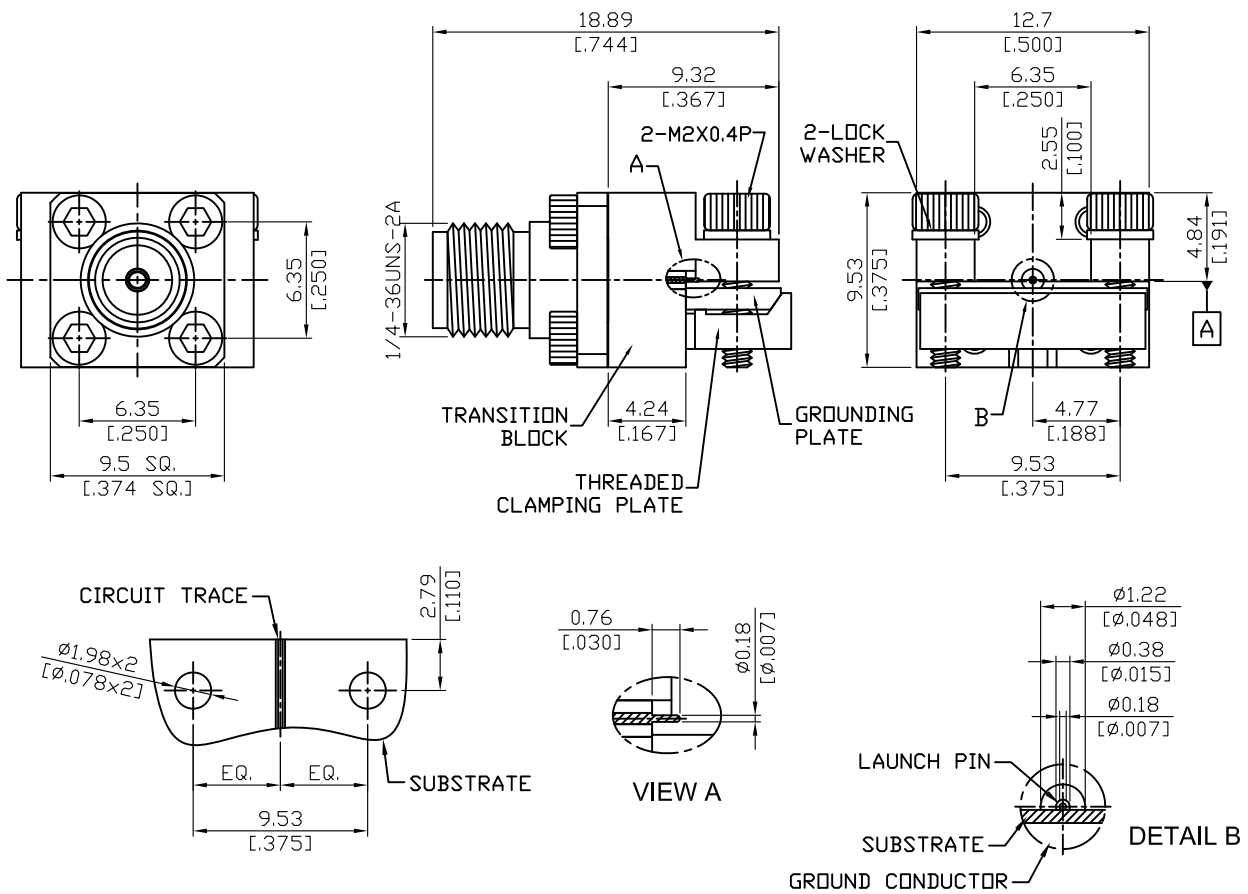


SMA84LP-07/15	SMA Jack Low Profile 2 Hole End Launch With $\phi 0.18\text{mm}$ (0.007inch) Launch Pin	50Ω
----------------------	--	------------------------------



NOTE: LOW VSWR ; DIRECT MATCH TO SOUTHWEST MICROWAVE P/N 292-05A-6

Parts	Material	Plating (Micro-inch)
Washer	Stainless Steel	Passivated
Screw	Stainless Steel	Passivated
Contact Pin	Beryllium Copper	Gold 4 Over Nickel-Phosphorus Alloy 80 Over Copper 20
Insulator	Teflon	
Clamping Plate	Brass	Tin-Zinc-Copper-Alloy 100 Over Copper 50
Grounding Plate	Brass	Tin-Zinc-Copper-Alloy 100 Over Copper 50
Transition Block	Brass	Tin-Zinc-Copper-Alloy 100 Over Copper 50
Body	Stainless Steel	Passivated

This part number complies with RoHS.

Notice: JYEBAO reserves the right to make modifications deemed appropriate.