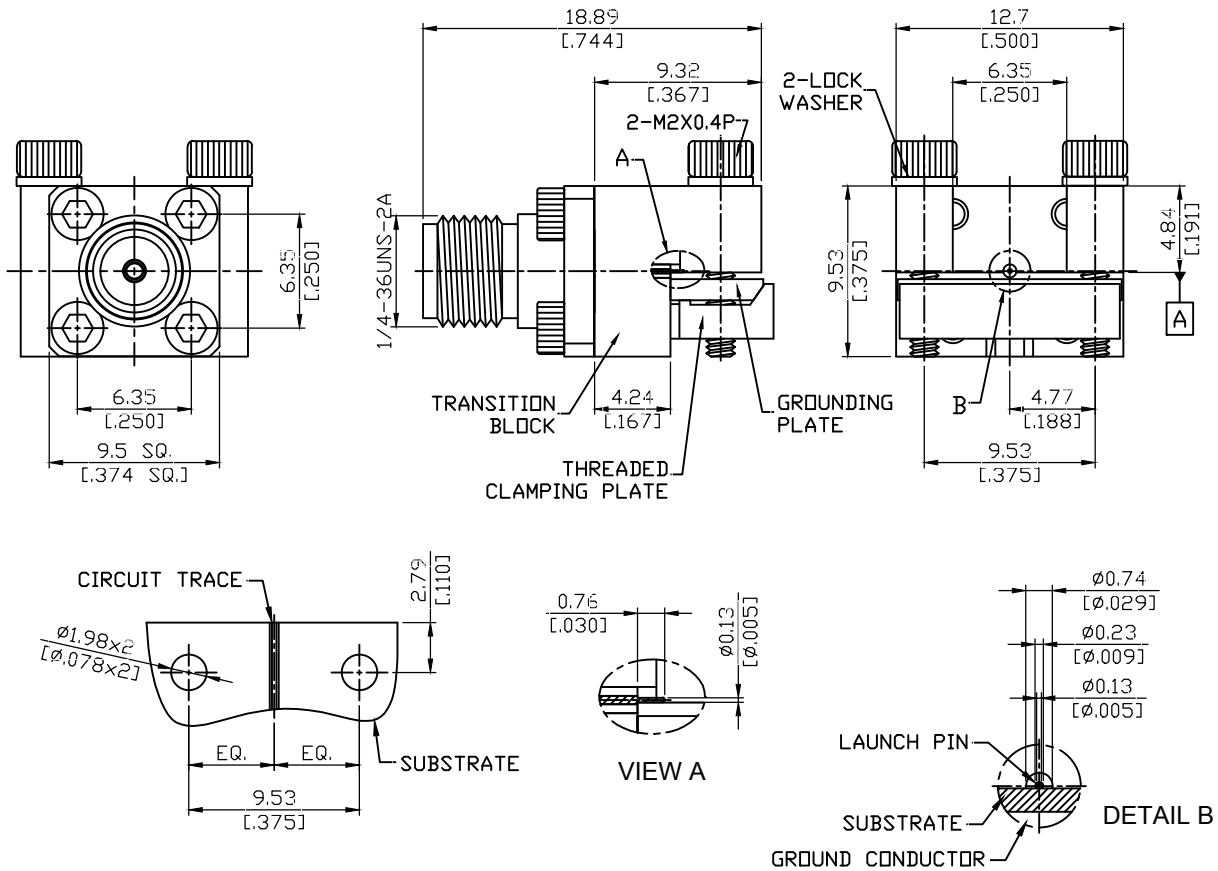


SMA84EL-05/09

SMA Jack End Launch
With .005 inch board pin (=SW PN 292-07A-5)

50Ω



NOTE: LOW VSWR ; DIRECT MATCH TO SOUTHWEST MICROWAVE P/N 292-07A-5

Parts	Material	Plating (Micro-inch)
Lock Washer	Stainless Steel	Passivated
Screw	Stainless Steel	Passivated
Launch Pin	Beryllium Copper	Gold 4 Over Nickel-Phosphorus Alloy 80 Over Copper 20
Insulator (for launch pin)	PTFE	
Grounding Plate	Brass	Tin-Zinc-Copper-Alloy 100 Over Copper 50
Clamping Plate	Brass	Tin-Zinc-Copper-Alloy 100 Over Copper 50
Transition Block	Brass	Tin-Zinc-Copper-Alloy 100 Over Copper 50
Contact Pin	Beryllium Copper	Gold 4 Over Nickel-Phosphorus Alloy 80 Over Copper 20
Insulator	PTFE	
Body	Stainless Steel	Passivated

This part number complies with RoHS.

Notice: JYEBAO reserves the right to make modifications deemed appropriate.