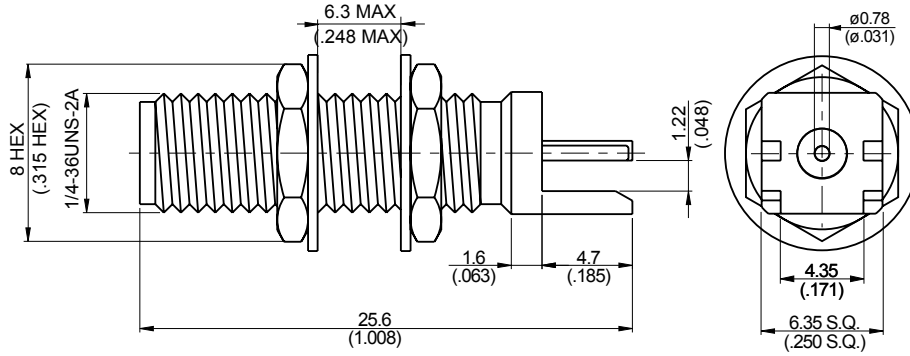
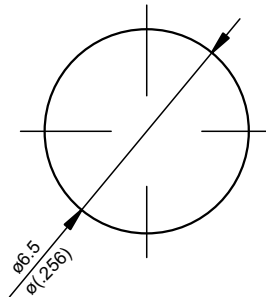


SMA8403B-0000

SMA Jack PCB Mount For Bulkhead End Launch (T=1.22)  
With Round Contact (Φ0.78); 27GHz VSWR 1.2 50Ω



MOUNTING HOLE :



| Parts       | Material         | Plating (Micro-inch)                                  |
|-------------|------------------|---|
| Hex Nut     | Brass            | Gold 4 Over Nickel-Phosphorus Alloy 80 Over Copper 20 |
| Lock Washer | Brass            | Gold 4 Over Nickel-Phosphorus Alloy 80 Over Copper 20 |
| Contact Pin | Beryllium Copper | Gold 4 Over Nickel-Phosphorus Alloy 80 Over Copper 20 |
| Insulator   | Teflon           |   |
| Body        | Brass            | Gold 4 Over Nickel-Phosphorus Alloy 80 Over Copper 20 |

Weight: 4.45 g

This part number complies with RoHS.

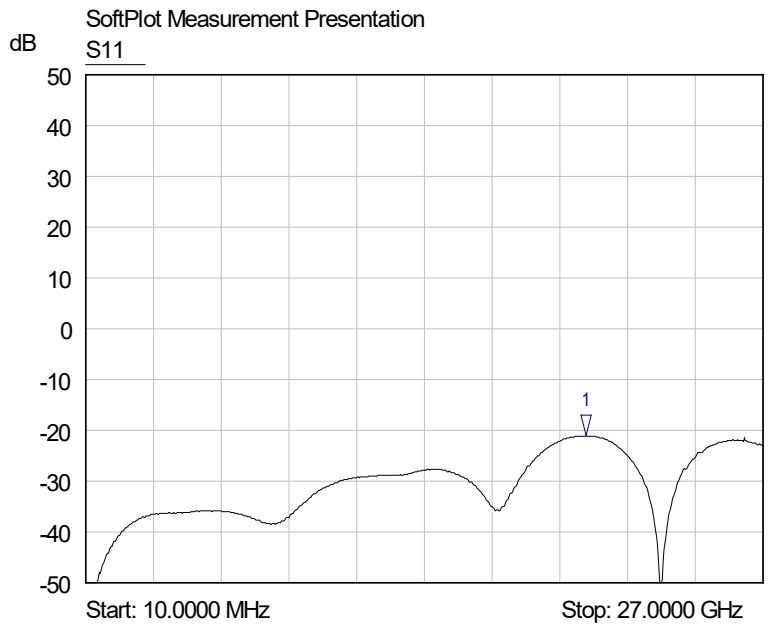
Notice: JYEBAO reserves the right to make modifications deemed appropriate.

| SMA  | SMA8403B-0000 |
|--|---------------|
| <div data-bbox="167 383 568 432" style="border: 1px solid black; padding: 2px;">Interface</div> <p>MIL-STD-348B</p> <p>Mechanically compatible with 2.92 &amp; 3.5</p>   |               |
| <div data-bbox="167 551 568 600" style="border: 1px solid black; padding: 2px;">Electrical Data</div> <p>Impedance 50Ω</p> <p>Frequency range DC to 27GHz</p> <p>VSWR <math>\leq 1.2</math> (DC to 27GHz)</p> <p>Insertion loss <math>\leq 0.04 \times \sqrt{f(\text{GHz})}</math> dB</p> <p>Insulation resistance <math>\geq 5000\text{M}\Omega</math></p> <p>Contact resistance inner conductor <math>\leq 3\text{m}\Omega</math></p> <p>Contact resistance outer conductor <math>\leq 2\text{m}\Omega</math></p> <p>Dielectric withstanding voltage (at sea level) 1500 V rms</p> <p>Working voltage (at sea level) 500 V rms</p> |               |
| <div data-bbox="167 1093 568 1142" style="border: 1px solid black; padding: 2px;">Mechanical Data</div> <p>Recommended coupling nut torque 4 inch lbs</p> <p>Coupling proof torque 5.3 inch lbs</p> <p>Contact Captivation-axial <math>\geq 6.1</math> lbs</p> <p>Durability (mating) <math>\geq 100</math></p>  |               |
| <div data-bbox="167 1402 568 1451" style="border: 1px solid black; padding: 2px;">Environmental Data</div> <p>Temperature range -65°C to +165°C</p> <p>Thermal shock MIL-STD-202, Method 107, Condition B</p> <p>Moisture resistance MIL-STD-202, Method 106</p> <p>Corrosion MIL-STD-202, Method 101, Condition B</p> <p>RoHS Compliant</p>   |               |
| <div data-bbox="167 1753 568 1803" style="border: 1px solid black; padding: 2px;">Tooling</div>  |               |

Notice: JYEBAO reserves the right to make modifications deemed appropriate.

# SMA8403B-0000

S11



1 S11  
▽ 19.9489 GHz  
-21.07 dB