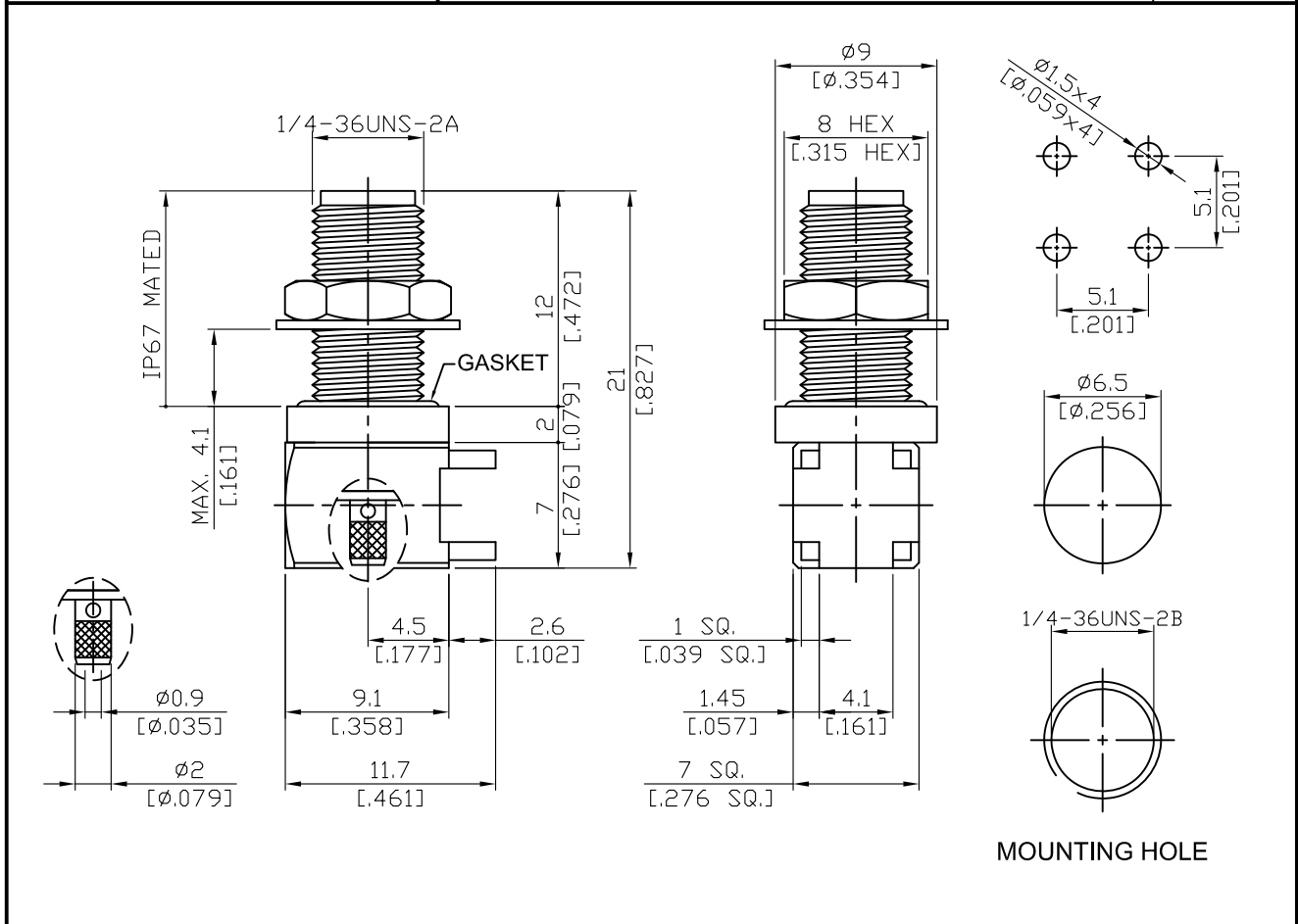


SMA8400A-9081	SMA Jack Solder PCB Mount Bulkhead Right Angle For 0.8mm Cable; IP67 Mated; 6GHz VSWR 1.2	50Ω
---------------	----------------------------------------------------------------------------------------------	-----



Parts	Material	Plating (Micro-inch)
Body	Brass	Gold 4 Over Nickel-Phosphorus Alloy 80 Over Copper 20
Insulator	Teflon	
Contact Pin	Beryllium Copper	Gold 4 Over Nickel-Phosphorus Alloy 80 Over Copper 20
Barrel	Brass	Gold 4 Over Nickel-Phosphorus Alloy 80 Over Copper 20
Gasket	Silicone	
Washer	Brass	Gold 4 Over Nickel-Phosphorus Alloy 80 Over Copper 20
Hex Nut	Brass	Gold 4 Over Nickel-Phosphorus Alloy 80 Over Copper 20

Suitable Cables: 0.8mm cable

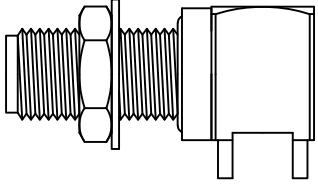


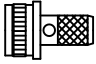
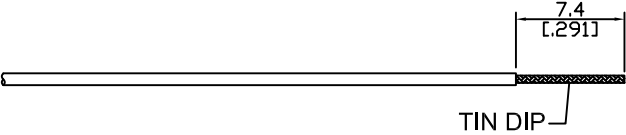
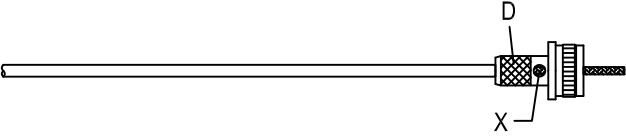
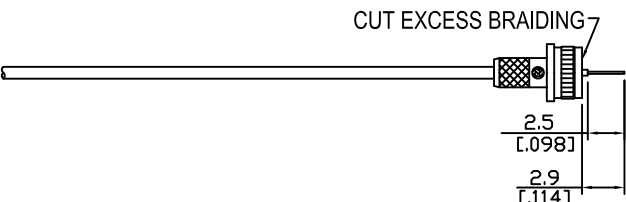
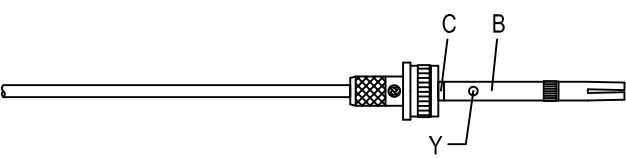
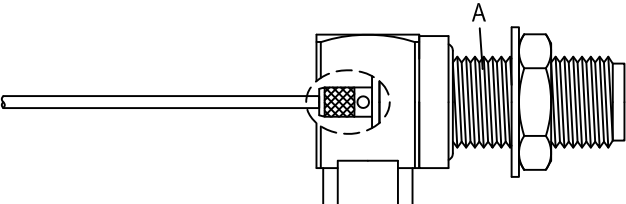
This part number complies with RoHS.
 Notice: JYEBAO reserves the right to make modifications deemed appropriate.

SMA	SMA8400A-9081
Interface	
MIL-STD-348B	
Mechanically compatible with	2.92 & 3.5
Electrical Data	
Impedance	50Ω
Frequency range	DC to 6GHz
VSWR	≤ 1.2 (DC to 6GHz)
Insertion loss	≤ 0.04 x √f(GHz) dB
Insulation resistance	≥ 5000MΩ
Contact resistance inner conductor	≤ 3mΩ
Contact resistance outer conductor	≤ 2mΩ
Dielectric withstanding voltage (at sea level)	1500 V rms
Working voltage (at sea level)	500 V rms
Mechanical Data	
Recommended coupling nut torque	4 inch lbs
Coupling proof torque	5.3 inch lbs
Coupling nut retention force	≥ 60.7 lbs
Contact Captivation-axial	≥ 6.1 lbs
Durability (mating)	≥ 100
Environmental Data	
Temperature range	-65°C to +165°C
Thermal shock	MIL-STD-202, Method 107, Condition B
Moisture resistance	MIL-STD-202, Method 106
Corrosion	MIL-STD-202, Method 101, Condition B
RoHS	Compliant
Tooling	

Notice: JYEBAO reserves the right to make modifications deemed appropriate.

JYE BAO CO., LTD.

CABLE ASSEMBLY INSTRUCTION

SMA8400A-9081	DATE	2020/05/07	REV	—
<p>A</p>  <p>BODY + GASKET + WASHER + HEX NUT</p>	<p>B</p>  <p>CONTACT PIN</p>	<p>C</p>  <p>INSULATOR</p>	<p>D</p>  <p>BARREL</p>	
DIAGRAM	ASSEMBLY INSTRUCTION			
 <p>TIN DIP</p>	<p>Step 1: STRIP AS SHOWN AND TIN DIP BRAIDING.</p>			
	<p>Step 2: SLIDE BARREL " D " OVER THE CABLE AND SOLDER IN " X ".</p>			
 <p>CUT EXCESS BRAIDING</p>	<p>Step 3: CUT AWAY ANY EXCESS BRAIDING STICKING OUT OF THE BARREL. Step 4: STRIP AS SHOWN.</p>			
	<p>Step 5: PUT INSULATOR " C " AND PIN " B " ON CENTER CONDUCTOR AND SOLDER IN " Y ".</p>			
	<p>Step 6: PRESS FIT CABLE INTO THE CONNECTOR BODY " A ".</p>			
<p>This part number complies with RoHS. Notice: JYEBAO reserves the right to make modifications deemed appropriate.</p>				
APPROVED	CHECKED	DRAWING		<i>Albert</i>