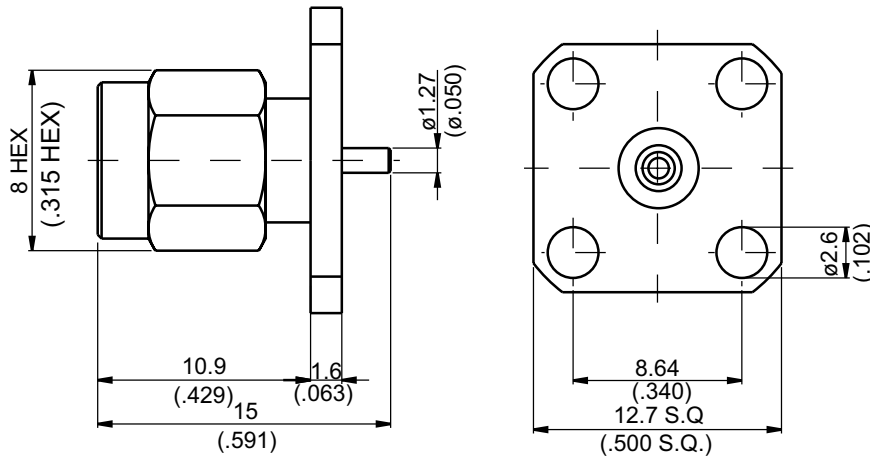


SMA364K1-0000

SMA Plug SQ 12.7mm 4 Hole Flange With Round Contact (Φ1.27;L=2.5); 15GHz VSWR 1.2 50Ω



| Parts | Material | Plating(Micro-inch) |
|--------------|------------------|---|
| Renber Ring | Beryllium Copper | Tin-Zinc-Copper-Alloy 100 Over Copper 50 |
| Gasket | Silicon | |
| Contact Pin | Brass | Gold 4 Over Nickel-Phosphorus Alloy 80 Over Copper 20 |
| Insulator | Teflon | |
| Body | Brass | Gold 4 Over Nickel-Phosphorus Alloy 80 Over Copper 20 |
| Coupling Nut | Brass | Gold 4 Over Nickel-Phosphorus Alloy 80 Over Copper 20 |

Weight: 4.19 g

This part number complies with RoHS.

Notice: JYEBAO reserves the right to make modifications deemed appropriate.

| SMA | SMA364K1-0000 |
|--|--------------------------------------|
| Interface | |
| MIL-STD-348B | |
| Mechanically compatible with | 2.92 & 3.5 |
| Electrical Data | |
| Impedance | 50Ω |
| Frequency range | DC to 15GHz |
| VSWR | ≤ 1.2 (DC to 15GHz) |
| Insertion loss | ≤ 0.04 x √f(GHz) dB |
| Insulation resistance | ≥ 5000MΩ |
| Contact resistance inner conductor | ≤ 3mΩ |
| Contact resistance outer conductor | ≤ 2mΩ |
| Dielectric withstanding voltage (at sea level) | 1500 V rms |
| Working voltage (at sea level) | 500 V rms |
| Mechanical Data | |
| Recommended coupling nut torque | 4 inch lbs |
| Coupling proof torque | 5.3 inch lbs |
| Coupling nut retention force | ≥ 60.7 lbs |
| Contact Captivation-axial | ≥ 6.1 lbs |
| Durability (mating) | ≥ 100 |
| Environmental Data | |
| Temperature range | -65°C to +165°C |
| Thermal shock | MIL-STD-202, Method 107, Condition B |
| Moisture resistance | MIL-STD-202, Method 106 |
| Corrosion | MIL-STD-202, Method 101, Condition B |
| RoHS | Compliant |
| Tooling | |

Notice: JYEBAO reserves the right to make modifications deemed appropriate.

SMA364K1-0000

S11

