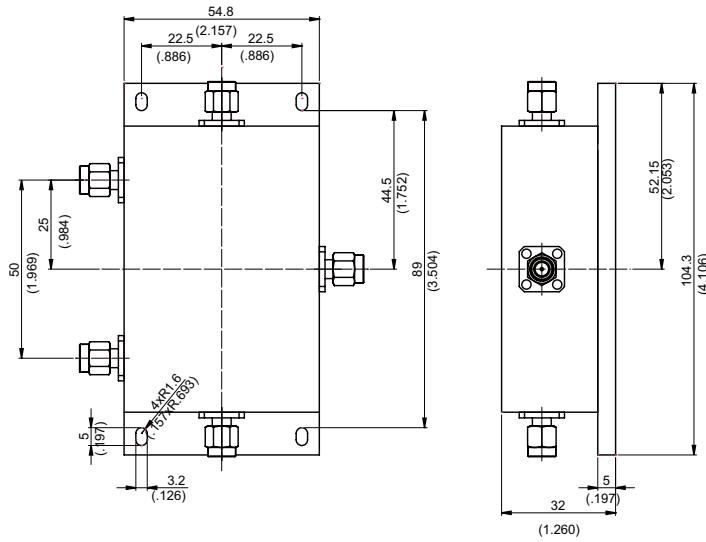


PD-AM1.7/2G30W4W

SMA Plug TO SMA Plug (Four Way) POWER DIVIDER



Series	Male/ Female	Ferquency Range (GHz)	Imped. (Ohm)	Power (Watt)	Ways	Isolation (Min. dB)	Return Loss	Insertion Loss (typical)
SMA	Male	1.7 to 2.0 GHz	50Ω	30 W	4 Ways	20dB	≤-20dB	3.7dB

Parts	Material
SMA Plug	Brass
Housing	Aluminum

Weight: 277 g

This part number complies with RoHS.

Notice: JYEBAO reserves the right to make modifications deemed appropriate.