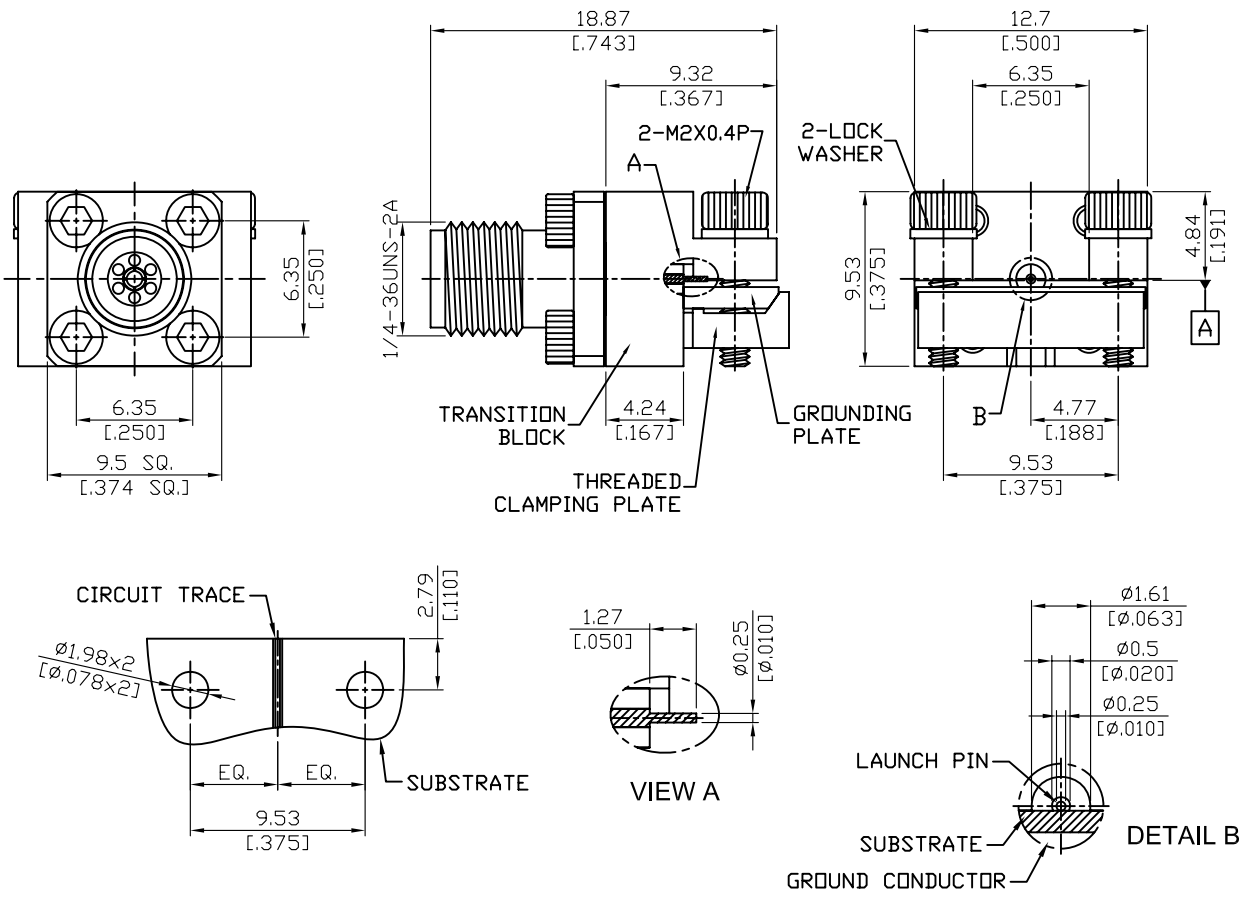


<b>K84LP-10/20</b>	<b>2.92mm Low Profile 2 Hole End Launch With <math>\Phi 0.25\text{mm}(.010 \text{ inch})</math> Launch Pin</b>	<b>50<math>\Omega</math></b>
--------------------	--	------------------------------



NOTE: LOW VSWR ; DIRECT MATCH TO SOUTHWEST MICROWAVE P/N 1092-03A-6

Parts	Material	Plating ( Micro-inch )
Lock Washer	Brass	Tin-Zinc-Copper-Alloy 100 Over Copper 50
Screw	Brass	Tin-Zinc-Copper-Alloy 100 Over Copper 50
Launch Pin	Beryllium Copper	Gold 4 Over Nickel-Phosphorus Alloy 80 Over Copper 20
Insulator (for launch pin)	Teflon	
Grounding Plate	Brass	Tin-Zinc-Copper-Alloy 100 Over Copper 50
Clamping Plate	Brass	Tin-Zinc-Copper-Alloy 100 Over Copper 50
Transition Block	Brass	Tin-Zinc-Copper-Alloy 100 Over Copper 50
Contact Pin	Beryllium Copper	Gold 4 Over Nickel-Phosphorus Alloy 80 Over Copper 20
Insulator	PPO	
Body	Stainless Steel	Passivated

This part number complies with RoHS.  
 Notice: JYEBAO reserves the right to make modifications deemed appropriate.