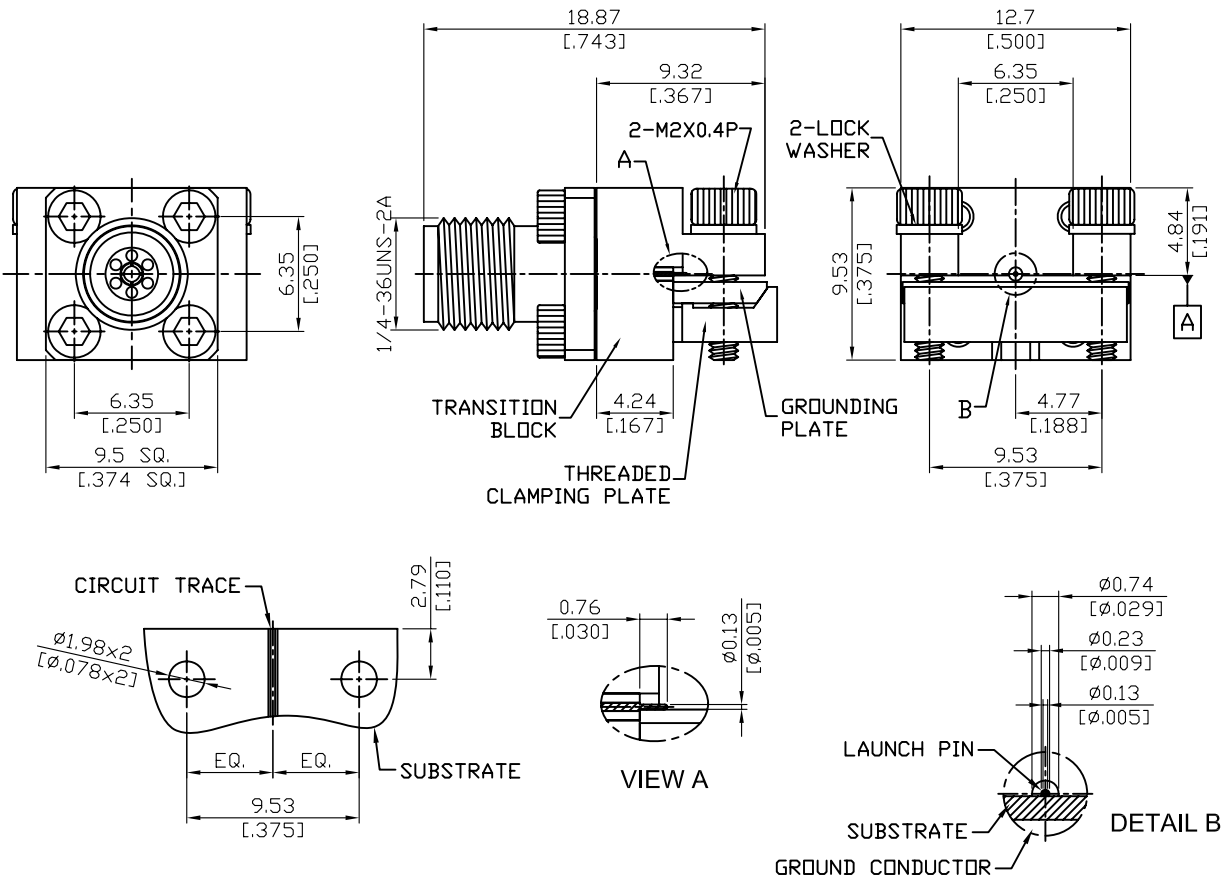


K84LP-05/09 **2.92mm Jack Low Profile 2 Hole End Launch** **50Ω**
With $\Phi 0.13\text{mm}(.005\text{ inch})$ Launch Pin



NOTE: LOW VSWR ; DIRECT MATCH TO SOUTHWEST MICROWAVE P/N 1092-01A-6

Parts	Material	Plating (Micro-inch)
Lock Washer	Brass	Tin-Zinc-Copper-Alloy 100 Over Copper 50
Screw	Brass	Tin-Zinc-Copper-Alloy 100 Over Copper 50
Launch Pin	Beryllium Copper	Gold 4 Over Nickel-Phosphorus Alloy 80 Over Copper 20
Insulator (for launch pin)	Teflon	
Grounding Plate	Brass	Tin-Zinc-Copper-Alloy 100 Over Copper 50
Clamping Plate	Brass	Tin-Zinc-Copper-Alloy 100 Over Copper 50
Transition Block	Brass	Tin-Zinc-Copper-Alloy 100 Over Copper 50
Contact Pin	Beryllium Copper	Gold 4 Over Nickel-Phosphorus Alloy 80 Over Copper 20
Insulator	PPO	
Body	Stainless Steel	Passivated

This part number complies with RoHS.
 Notice: JYEBAO reserves the right to make modifications deemed appropriate.