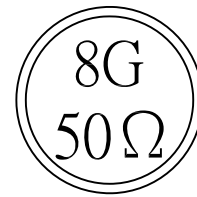
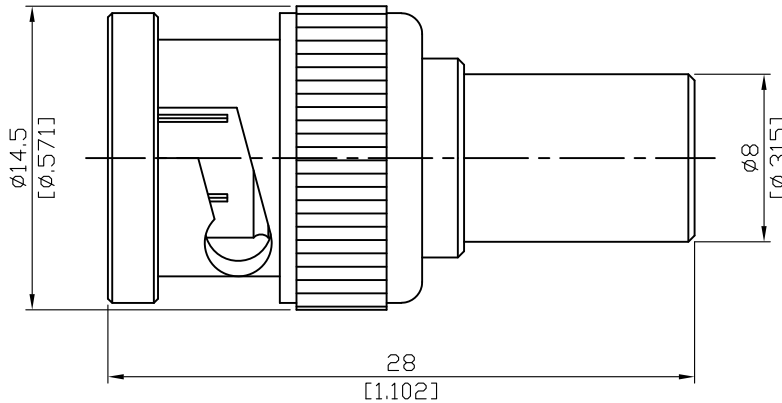


BNC3900-0008

2 Watt 50ohm BNC Plug Termination  
8GHz VSWR 1.25

50Ω



2W average power from -55°C to +70°C linearly derated to 1 Watt at 165°C

| Parts        | Material | Plating ( Micro-inch )                                |
|--------------|----------|---|
| Contact Body | Brass    | Tin-Zinc-Copper-Alloy 100 Over Copper 50              |
| Contact Pin  | Brass    | Gold 4 Over Nickel-Phosphorus Alloy 80 Over Copper 20 |
| Gasket       | Silicone |   |
| Spring       | SK5      | Tin-Zinc-Copper-Alloy 100 Over Copper 50              |
| Washer       | Brass    | Tin-Zinc-Copper-Alloy 100 Over Copper 50              |
| Insulator    | Teflon   |   |
| Body         | Brass    | Tin-Zinc-Copper-Alloy 100 Over Copper 50              |
| Coupling Nut | Brass    | Tin-Zinc-Copper-Alloy 100 Over Copper 50              |

Weight: 11.47g

This part number complies with RoHS.

Notice: JYEBAO reserves the right to make modifications deemed appropriate.

| BNC  | BNC3900-0008                         |                                 |                     |                              |                                      |                           |                         |                     |                                      |                       |           |                                    |         |                                    |       |  |            |                                |           |
|--|--------------------------------------|---------------------------------|---------------------|------------------------------|--------------------------------------|---------------------------|-------------------------|---------------------|--------------------------------------|-----------------------|-----------|------------------------------------|---------|------------------------------------|-------|--|------------|--------------------------------|-----------|
| <div data-bbox="167 344 568 392" style="border: 1px solid black; padding: 2px;">Interface</div> <p>MIL-STD-348B</p>  |                                      |                                 |                     |                              |                                      |                           |                         |                     |                                      |                       |           |                                    |         |                                    |       |  |            |                                |           |
| <div data-bbox="167 510 568 557" style="border: 1px solid black; padding: 2px;">Electrical Data</div> <table border="0" style="width: 100%;"> <tr> <td style="width: 50%;">Impedance</td> <td style="width: 50%;">50Ω</td> </tr> <tr> <td>Frequency range</td> <td>DC to 8GHz</td> </tr> <tr> <td>VSWR</td> <td>≤ 1.25 (DC to 8GHz)</td> </tr> <tr> <td>Insertion loss</td> <td>≤ 0.1 x √f(GHz)dB</td> </tr> <tr> <td>Insulation resistance</td> <td>≥ 5000MΩ</td> </tr> <tr> <td>Contact resistance inner conductor</td> <td>≤ 1.5mΩ</td> </tr> <tr> <td>Contact resistance outer conductor</td> <td>≤ 1mΩ</td> </tr> <tr> <td>Dielectric withstanding voltage (at sea level)</td> <td>1500 V rms</td> </tr> <tr> <td>Working voltage (at sea level)</td> <td>500 V rms</td> </tr> </table> |                                      | Impedance                       | 50Ω                 | Frequency range              | DC to 8GHz                           | VSWR                      | ≤ 1.25 (DC to 8GHz)     | Insertion loss      | ≤ 0.1 x √f(GHz)dB                    | Insulation resistance | ≥ 5000MΩ  | Contact resistance inner conductor | ≤ 1.5mΩ | Contact resistance outer conductor | ≤ 1mΩ | Dielectric withstanding voltage (at sea level) | 1500 V rms | Working voltage (at sea level) | 500 V rms |
| Impedance  | 50Ω                                  |                                 |                     |                              |                                      |                           |                         |                     |                                      |                       |           |                                    |         |                                    |       |  |            |                                |           |
| Frequency range  | DC to 8GHz                           |                                 |                     |                              |                                      |                           |                         |                     |                                      |                       |           |                                    |         |                                    |       |  |            |                                |           |
| VSWR   | ≤ 1.25 (DC to 8GHz)                  |                                 |                     |                              |                                      |                           |                         |                     |                                      |                       |           |                                    |         |                                    |       |  |            |                                |           |
| Insertion loss   | ≤ 0.1 x √f(GHz)dB                    |                                 |                     |                              |                                      |                           |                         |                     |                                      |                       |           |                                    |         |                                    |       |  |            |                                |           |
| Insulation resistance  | ≥ 5000MΩ                             |                                 |                     |                              |                                      |                           |                         |                     |                                      |                       |           |                                    |         |                                    |       |  |            |                                |           |
| Contact resistance inner conductor   | ≤ 1.5mΩ                              |                                 |                     |                              |                                      |                           |                         |                     |                                      |                       |           |                                    |         |                                    |       |  |            |                                |           |
| Contact resistance outer conductor   | ≤ 1mΩ                                |                                 |                     |                              |                                      |                           |                         |                     |                                      |                       |           |                                    |         |                                    |       |  |            |                                |           |
| Dielectric withstanding voltage (at sea level)   | 1500 V rms                           |                                 |                     |                              |                                      |                           |                         |                     |                                      |                       |           |                                    |         |                                    |       |  |            |                                |           |
| Working voltage (at sea level)   | 500 V rms                            |                                 |                     |                              |                                      |                           |                         |                     |                                      |                       |           |                                    |         |                                    |       |  |            |                                |           |
| <div data-bbox="167 1052 568 1099" style="border: 1px solid black; padding: 2px;">Mechanical Data</div> <table border="0" style="width: 100%;"> <tr> <td style="width: 50%;">Recommended coupling nut torque</td> <td style="width: 50%;">0.6 to 2.5 inch lbs</td> </tr> <tr> <td>Coupling nut retention force</td> <td>≥ 101.2 lbs</td> </tr> <tr> <td>Contact captivation-axial</td> <td>≥ 6.1 lbs</td> </tr> <tr> <td>Durability (mating)</td> <td>≥ 500</td> </tr> </table>  |                                      | Recommended coupling nut torque | 0.6 to 2.5 inch lbs | Coupling nut retention force | ≥ 101.2 lbs                          | Contact captivation-axial | ≥ 6.1 lbs               | Durability (mating) | ≥ 500                                |                       |           |                                    |         |                                    |       |  |            |                                |           |
| Recommended coupling nut torque  | 0.6 to 2.5 inch lbs                  |                                 |                     |                              |                                      |                           |                         |                     |                                      |                       |           |                                    |         |                                    |       |  |            |                                |           |
| Coupling nut retention force   | ≥ 101.2 lbs                          |                                 |                     |                              |                                      |                           |                         |                     |                                      |                       |           |                                    |         |                                    |       |  |            |                                |           |
| Contact captivation-axial  | ≥ 6.1 lbs                            |                                 |                     |                              |                                      |                           |                         |                     |                                      |                       |           |                                    |         |                                    |       |  |            |                                |           |
| Durability (mating)  | ≥ 500                                |                                 |                     |                              |                                      |                           |                         |                     |                                      |                       |           |                                    |         |                                    |       |  |            |                                |           |
| <div data-bbox="167 1359 568 1406" style="border: 1px solid black; padding: 2px;">Environmental Data</div> <table border="0" style="width: 100%;"> <tr> <td style="width: 50%;">Temperature range</td> <td style="width: 50%;">-65°C to +165°C</td> </tr> <tr> <td>Thermal shock</td> <td>MIL-STD-202, Method 107, Condition B</td> </tr> <tr> <td>Moisture resistance</td> <td>MIL-STD-202, Method 106</td> </tr> <tr> <td>Corrosion</td> <td>MIL-STD-202, Method 101, Condition B</td> </tr> <tr> <td>RoHS</td> <td>Compliant</td> </tr> </table>  |                                      | Temperature range               | -65°C to +165°C     | Thermal shock                | MIL-STD-202, Method 107, Condition B | Moisture resistance       | MIL-STD-202, Method 106 | Corrosion           | MIL-STD-202, Method 101, Condition B | RoHS                  | Compliant |                                    |         |                                    |       |  |            |                                |           |
| Temperature range  | -65°C to +165°C                      |                                 |                     |                              |                                      |                           |                         |                     |                                      |                       |           |                                    |         |                                    |       |  |            |                                |           |
| Thermal shock  | MIL-STD-202, Method 107, Condition B |                                 |                     |                              |                                      |                           |                         |                     |                                      |                       |           |                                    |         |                                    |       |  |            |                                |           |
| Moisture resistance  | MIL-STD-202, Method 106              |                                 |                     |                              |                                      |                           |                         |                     |                                      |                       |           |                                    |         |                                    |       |  |            |                                |           |
| Corrosion  | MIL-STD-202, Method 101, Condition B |                                 |                     |                              |                                      |                           |                         |                     |                                      |                       |           |                                    |         |                                    |       |  |            |                                |           |
| RoHS   | Compliant                            |                                 |                     |                              |                                      |                           |                         |                     |                                      |                       |           |                                    |         |                                    |       |  |            |                                |           |
| <div data-bbox="167 1713 568 1760" style="border: 1px solid black; padding: 2px;">Tooling</div>  |                                      |                                 |                     |                              |                                      |                           |                         |                     |                                      |                       |           |                                    |         |                                    |       |  |            |                                |           |

Notice: JYEBAO reserves the right to make modifications deemed appropriate.

# BNC3900-0008

