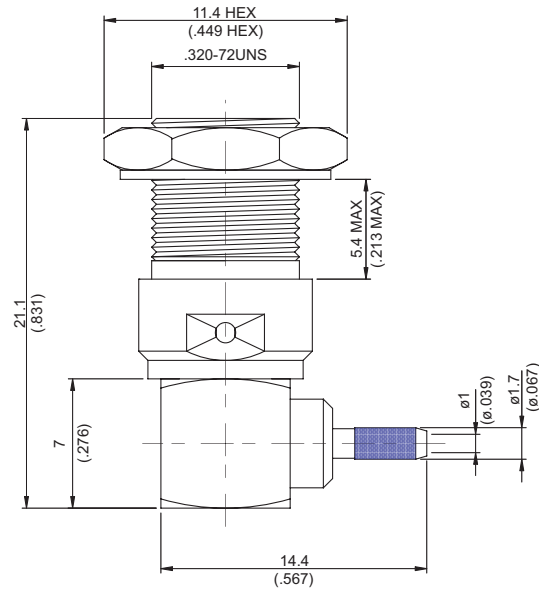
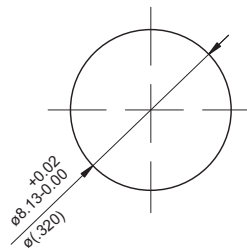


BMA8105-9178

**BMA Jack Crimp For Bulkhead Right Angle 50Ω**



MOUNTING HOLE:



Parts	Material	Plating (Micro-inch)
Contact Pin	Beryllium Copper	Gold 10 Over Nickel 50 Over Copper 50
Cover	Brass	Gold 5 Over Nickel 50 Over Copper 50
Nut	Stainless	Passivated
Washer	Stainless	Passivated
Ferrule	Brass	Gold 10 Over Nickel 50 Over Copper 50
Contact Body	Stainless	Passivated
Spring Washer	Beryllium Copper	Gold 5 Over Nickel 50 Over Copper 50
Spring Ring	Beryllium Copper	Gold 5 Over Nickel 50 Over Copper 50
Insulator	Teflon	
Body	Stainless	Passivated

Weight: 8.38 g

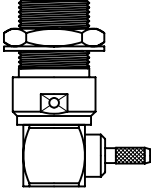

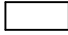

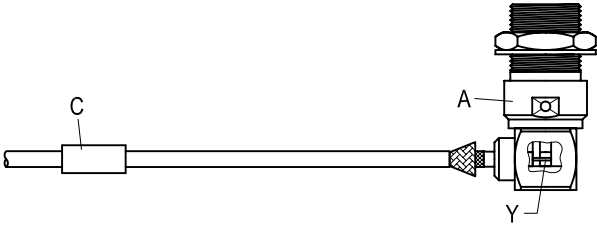
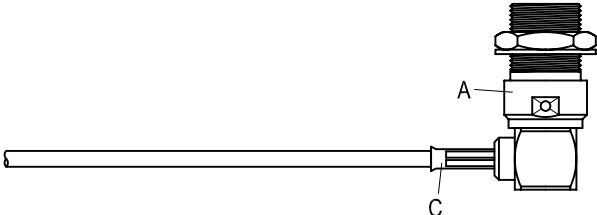
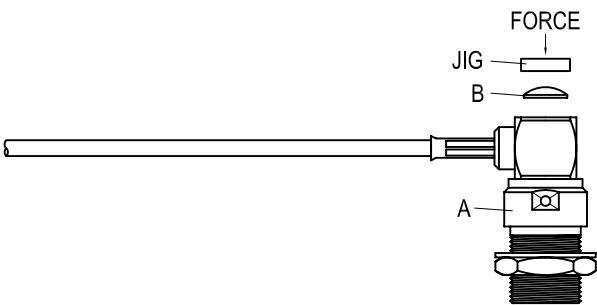
Suitable Cables: RG178, RG178-FEP, RG196

**This part number complies with RoHS.**

**Notice: JYEBAO reserves the right to make modifications deemed appropriate.**

# JYE BAO CO., LTD.

## CABLE ASSEMBLY INSTRUCTION

BMA8105-9178	DATE	2017/09/25	REV	—	
<p>A</p>  <p style="text-align: center;">BODY</p>	<p>B</p>  <p style="text-align: center;">COVER</p>	<p>C</p>  <p style="text-align: center;">FERRULE</p>			
DIAGRAM	ASSEMBLY INSTRUCTION				
	Step 1: STRIP AS SHOWN.				
	Step 2: SLIDE FERRULE " C " OVER CABLE. Step 3: WRAP THE BRAIDING UPWARDS. Step 4: SLIDE CENTER CONDUCTOR ON THE CONTACT PIN OF CONNECTOR " A " AND SOLDER IN " Y ".				
	Step 5: SLIDE FERRULE " C " TOWARDS THE CONNECTOR " A " AND CRIMP. (USE 2.7mm/0.106inch HEX SECTION OF INSERT-A)				
	Step 6: PRESS ON THE TOP OF " B " WITH JIGS.				
This part number complies with RoHS. Notice: JYEBAO reserves the right to make modifications deemed appropriate.					
APPROVED	CHECKED	DRAWING	<i>Albert</i>		