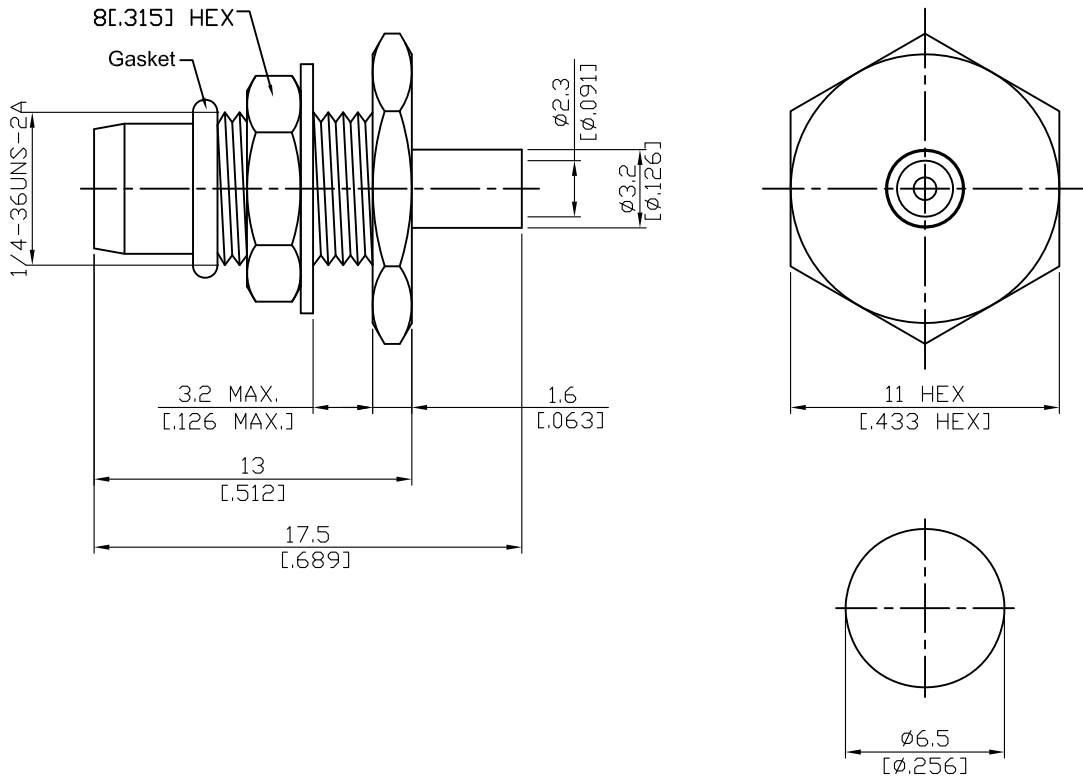


BMA3305-0085

BMA Plug Solder Bulkhead For RG405,  
18GHz VSWR 1.25

50Ω



MOUNTING HOLE

Parts	Material	Plating ( Micro-inch )
Hex Nut	Brass	Gold 4 Over Nickel-Phosphorus Alloy 80 Over Copper 20
Lock Washer	Brass	Gold 4 Over Nickel-Phosphorus Alloy 80 Over Copper 20
Gasket	Silicone	
Contact Pin	Beryllium Copper	Gold 4 Over Nickel-Phosphorus Alloy 80 Over Copper 20
Insulator	Teflon	
Body	Brass	Gold 4 Over Nickel-Phosphorus Alloy 80 Over Copper 20

Suitable Cables: .085 Semi-Rigid, .085 Formable, RG405

This part number complies with RoHS.

Notice: JYEBAO reserves the right to make modifications deemed appropriate.

BMA	BMA3305-0085																		
<div style="border: 1px solid black; padding: 2px; margin-bottom: 5px;">Interface</div> MIL-STD-348B																			
<div style="border: 1px solid black; padding: 2px; margin-bottom: 5px;">Electrical Data</div> <table style="width: 100%; border-collapse: collapse;"> <tr> <td style="width: 60%;">Impedance</td> <td style="text-align: right;">50Ω</td> </tr> <tr> <td>Frequency range</td> <td style="text-align: right;">DC to 18GHz</td> </tr> <tr> <td>VSWR</td> <td style="text-align: right;"><math>\leq 1.25</math>(DC to 18GHz)</td> </tr> <tr> <td>Insertion loss</td> <td style="text-align: right;"><math>\leq 0.03 \times \sqrt{f(\text{GHz})}</math> dB</td> </tr> <tr> <td>Insulation resistance</td> <td style="text-align: right;"><math>\geq 5000\text{M}\Omega</math></td> </tr> <tr> <td>Contact resistance inner conductor</td> <td style="text-align: right;"><math>\leq 2\text{m}\Omega</math></td> </tr> <tr> <td>Contact resistance outer conductor</td> <td style="text-align: right;"><math>\leq 2\text{m}\Omega</math></td> </tr> <tr> <td>Dielectric withstanding voltage (at sea level)</td> <td style="text-align: right;">1000 V rms</td> </tr> <tr> <td>Working voltage (at sea level)</td> <td style="text-align: right;">670 V rms</td> </tr> </table>		Impedance	50Ω	Frequency range	DC to 18GHz	VSWR	$\leq 1.25$ (DC to 18GHz)	Insertion loss	$\leq 0.03 \times \sqrt{f(\text{GHz})}$ dB	Insulation resistance	$\geq 5000\text{M}\Omega$	Contact resistance inner conductor	$\leq 2\text{m}\Omega$	Contact resistance outer conductor	$\leq 2\text{m}\Omega$	Dielectric withstanding voltage (at sea level)	1000 V rms	Working voltage (at sea level)	670 V rms
Impedance	50Ω																		
Frequency range	DC to 18GHz																		
VSWR	$\leq 1.25$ (DC to 18GHz)																		
Insertion loss	$\leq 0.03 \times \sqrt{f(\text{GHz})}$ dB																		
Insulation resistance	$\geq 5000\text{M}\Omega$																		
Contact resistance inner conductor	$\leq 2\text{m}\Omega$																		
Contact resistance outer conductor	$\leq 2\text{m}\Omega$																		
Dielectric withstanding voltage (at sea level)	1000 V rms																		
Working voltage (at sea level)	670 V rms																		
<div style="border: 1px solid black; padding: 2px; margin-bottom: 5px;">Mechanical Data</div> <table style="width: 100%; border-collapse: collapse;"> <tr> <td style="width: 60%;">Engagement force</td> <td style="text-align: right;"><math>\leq 3</math> lbs</td> </tr> <tr> <td>Disengagement force</td> <td style="text-align: right;"><math>\leq 1.5</math> lbs</td> </tr> <tr> <td>Contact captivation-axial</td> <td style="text-align: right;"><math>\geq 6.1</math> lbs</td> </tr> <tr> <td>Durability (mating)</td> <td style="text-align: right;"><math>\geq 1000</math></td> </tr> </table>		Engagement force	$\leq 3$ lbs	Disengagement force	$\leq 1.5$ lbs	Contact captivation-axial	$\geq 6.1$ lbs	Durability (mating)	$\geq 1000$										
Engagement force	$\leq 3$ lbs																		
Disengagement force	$\leq 1.5$ lbs																		
Contact captivation-axial	$\geq 6.1$ lbs																		
Durability (mating)	$\geq 1000$																		
<div style="border: 1px solid black; padding: 2px; margin-bottom: 5px;">Environmental Data</div> <table style="width: 100%; border-collapse: collapse;"> <tr> <td style="width: 60%;">Temperature range</td> <td style="text-align: right;">-65°C to+165°C</td> </tr> <tr> <td>Thermal shock</td> <td style="text-align: right;">MIL-STD-202, Method 107, Condition B</td> </tr> <tr> <td>Moisture resistance</td> <td style="text-align: right;">MIL-STD-202, Method 106</td> </tr> <tr> <td>Corrosion</td> <td style="text-align: right;">MIL-STD-202, Method 101, Condition B</td> </tr> <tr> <td>RoHS</td> <td style="text-align: right;">Compliant</td> </tr> </table>		Temperature range	-65°C to+165°C	Thermal shock	MIL-STD-202, Method 107, Condition B	Moisture resistance	MIL-STD-202, Method 106	Corrosion	MIL-STD-202, Method 101, Condition B	RoHS	Compliant								
Temperature range	-65°C to+165°C																		
Thermal shock	MIL-STD-202, Method 107, Condition B																		
Moisture resistance	MIL-STD-202, Method 106																		
Corrosion	MIL-STD-202, Method 101, Condition B																		
RoHS	Compliant																		
<div style="border: 1px solid black; padding: 2px; margin-bottom: 5px;">Tooling</div> <table style="width: 100%; border-collapse: collapse;"> <tr> <td style="width: 60%;">Soldering fixture</td> <td style="text-align: right;">ST-008</td> </tr> <tr> <td>Locator tool</td> <td style="text-align: right;">ST-011, ST-BMA33</td> </tr> <tr> <td>Insert for .085semi-rigid cable</td> <td style="text-align: right;">ST-009</td> </tr> </table>		Soldering fixture	ST-008	Locator tool	ST-011, ST-BMA33	Insert for .085semi-rigid cable	ST-009												
Soldering fixture	ST-008																		
Locator tool	ST-011, ST-BMA33																		
Insert for .085semi-rigid cable	ST-009																		

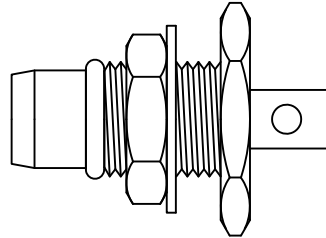
Notice: JYEBAO reserves the right to make modifications deemed appropriate.

# JYE BAO CO., LTD.

## CABLE ASSEMBLY INSTRUCTION

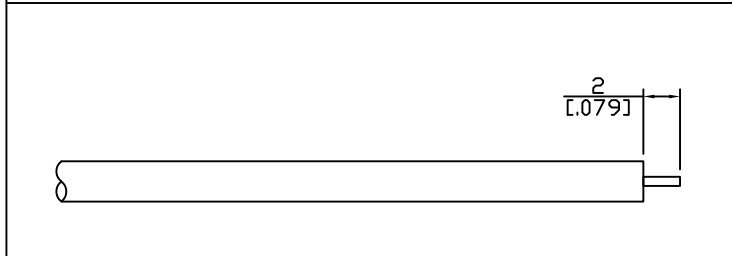
BMA3305-0085	DATE	2021/02/24	REV	B
--------------	------	------------	-----	---

A

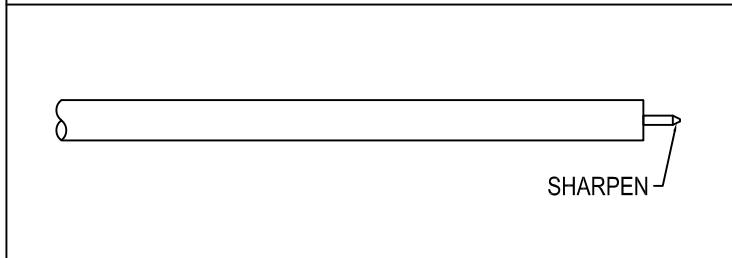


BODY + GASKET +  
WASHER + HEX NUT

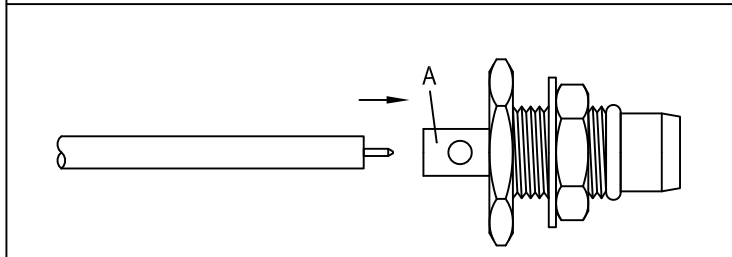
DIAGRAM	ASSEMBLY INSTRUCTION
---------	----------------------



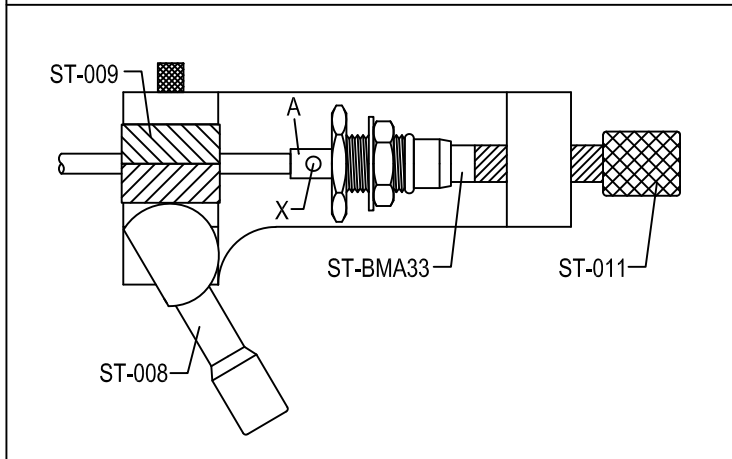
Step 1: STRIP AS SHOWN.



Step 2: SHARPEN CENTER CONDUCTOR TIP.



Step 3: SLIDE CABLE INTO CONNECTOR BODY "A".



Step 4: USE SOLDERING FIXTURE " ST-008 ", INSERT TOOL " ST-009 " AND LOCATOR TOOL " ST-011 " AND " ST-BMA33 " TO FIX THE CONNECTOR. SOLDER IN " X ".

This part number complies with RoHS.  
 Notice: JYEBAO reserves the right to make modifications deemed appropriate.

APPROVED	CHECKED	DRAWING
----------	---------	---------

*Albert*

# BMA3305-0085

S11

