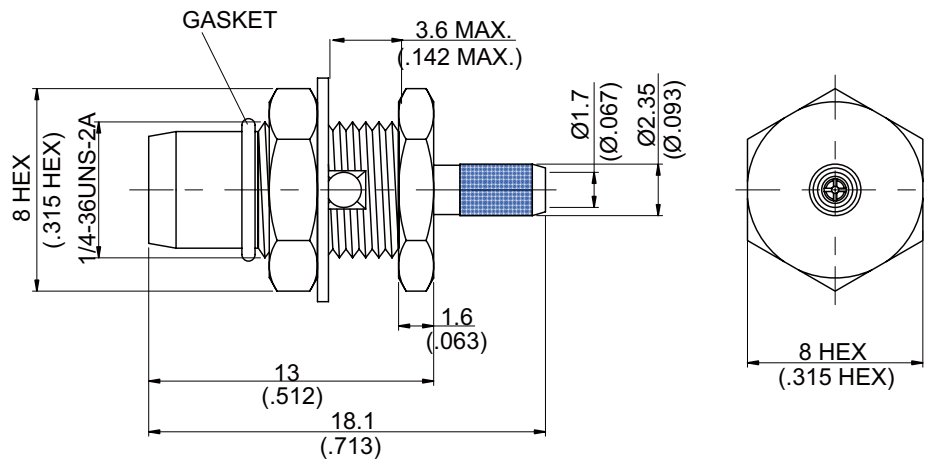
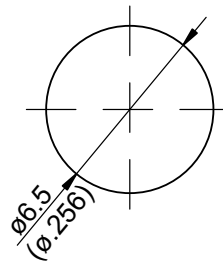


BMA3105S-L100

Stainless BMA Plug Crimp For Bulkhead 50Ω



MOUNTING HOLE



NOTE:Stainless Steel connector.

Parts	Material	Plating (Micro-inch)
Ferrule	Brass	Tin-Zinc-Copper-Alloy 100 Over Copper 50
Solder Pin	Brass	Gold 4 Over Nickel Phosphorous Alloy 80 Over Copper 20
Gasket	Silicon	
Lock Washer	Stainless Steel	Passivated
Hex Nut	Stainless Steel	Passivated
Insulator	Teflon	
Contact Pin	Beryllium Copper	Gold 4 Over Nickel Phosphorous Alloy 80 Over Copper 20
Body	Stainless Steel	Passivated

Weight:
Suitable Cables:JBY100

This part number complies with RoHS.

Notice: JYEBAO reserves the right to make modifications deemed appropriate.

CABLE ASSEMBLY INSTRUCTION

BMA3105S-L100

JYE BAO CO., LTD.
TAIPEI TAIWAN R.O.C

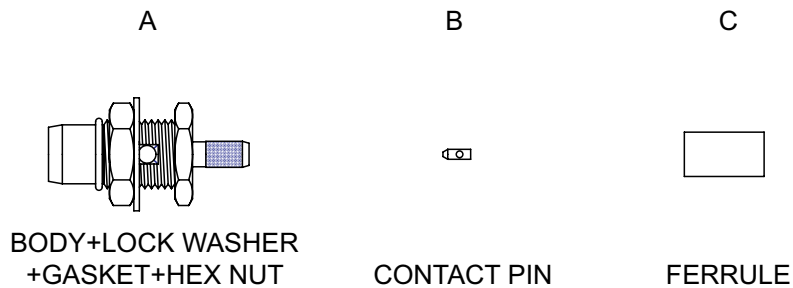
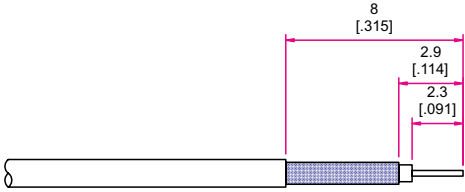
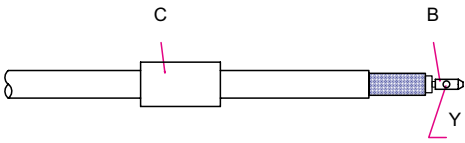
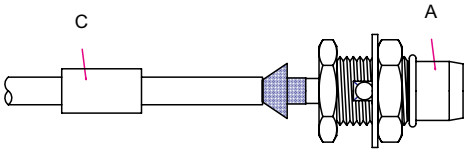
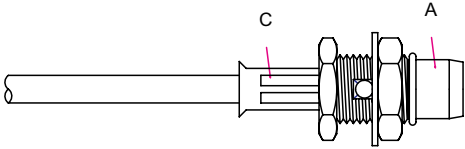


DIAGRAM	ASSEMBLY INSTRUCTION
	<p>Step 1: STRIP AS SHOWN .</p>
	<p>Step 2: SLIDE FERRULE " C " OVER CABLE. Step 3: PUT PIN " B " ON CENTER CONDUCTOR AND SOLDER IN " Y " .</p>
	<p>Step 4: LOOSEN BRAIDING AND SLIDE CONNECTOR " A " IN PLACE.</p>
	<p>Step 5: SLIDE FERRULE " C " TOWARDS THE CONNECTOR " A " AND CRIMP.</p>

This part number complies with RoHS.

Notice: JYEBAO reserves the right to make modifications deemed appropriate.