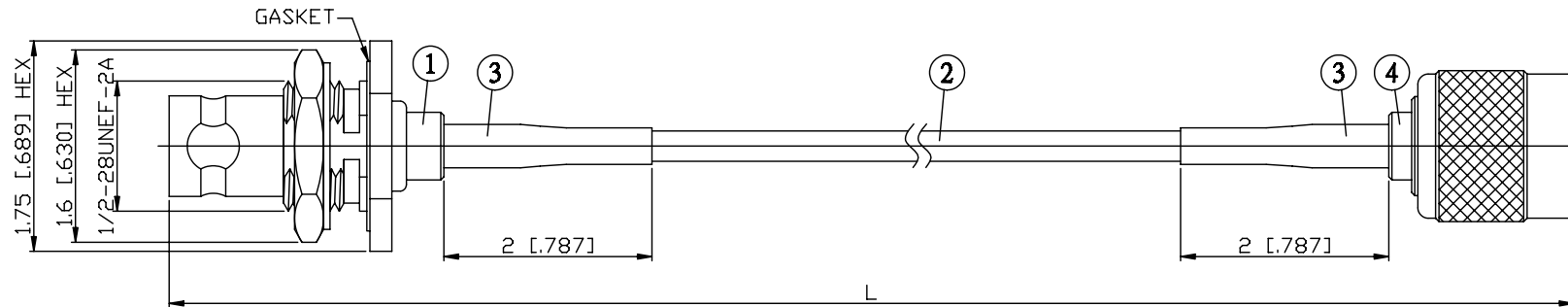


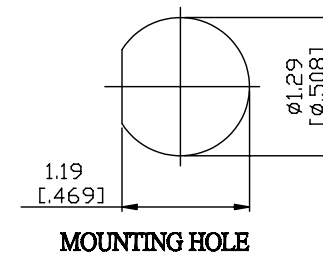
| NO. | COMPONENTS                               | IMPEDANCE |
|-----|--|-----------|
| 1   | BNC REVERSE POLARITY FEMALE FOR BULKHEAD | 50 OHM    |
| 2   | DOUBLE SHIELDED RG316(= RD316)           | 50 OHM    |
| 3   | HEAT SHRINKING TUBE                      |           |
| 4   | TNC REVERSE POLARITY MALE                | 50 OHM    |

BNC R/P FEMALE FOR BULKHEAD

TNC R/P MALE



| JYE BAO P/N     | L<br>CM (INCH)         |
|-----------------|------------------------|
| B95T60-316D-15  | 15 (5.906)             |
| B95T60-316D-30  | 30 (11.811)            |
| B95T60-316D-50  | 50 (19.685)            |
| B95T60-316D-100 | 100 (39.370)           |
| B95T60-316D-150 | 150 (59.055)           |
| B95T60-316D-200 | 200 (78.740)           |
| B95T60-316D-XXX | CUSTOM<br>LENGTH IN CM |



|   |   |
|---|---|
| LENGTH TOLERANCE<br>IS $\pm 1.5\%$ OR $\pm 10\text{MM}$ ,<br>WHICHEVER IS<br>GREATER. | <b>JYE BAO CO., LTD.</b><br>TAIPEI TAIWAN                               |
|   | DESCRIPTION CABLE ASSEMBLY BNC R/P JACK<br>FOR BULKHEAD TO TNC R/P PLUG |
|   | JYE BAO DRAWING NO.<br>B95T60-316D-XXX                                  |