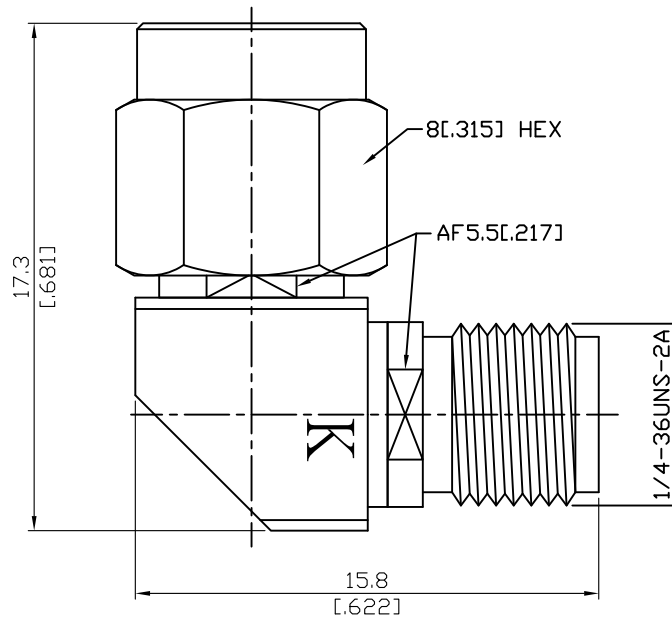


ALS-A3K8-27-1.2

Mitered SMA Plug To 2.92mm Jack
27GHz VSWR 1.2

50Ω



| Parts | Material | Plating (Micro-inch) |
|---------------|------------------|---|
| Retainer Ring | Beryllium Copper | Tin-Zinc-Copper-Alloy 100 Over Copper 50 |
| Gasket | Silicone | |
| Ferrule | Stainless Steel | Passivated |
| Contact Pin | Beryllium Copper | Gold 4 Over Nickel-Phosphorus Alloy 80 Over Copper 20 |
| Insulator | PPO | |
| Insulator | Teflon | |
| Body | Stainless Steel | Passivated |
| Coupling Nut | Stainless Steel | Passivated |

This part number complies with RoHS.

Notice: JYEBAO reserves the right to make modifications deemed appropriate.

| ALS-A3K8-27-1.2 | | Mitered SMA Plug To 2.92mm Jack 27GHz VSWR 1.2 | |
|--|--|---|-----------------|
| Interface | | 2.92 | SMA |
| Standard | | MIL-STD-348B | MIL-STD-348B |
| Mechanically compatible with | | 3.5 & SMA | 2.92 & 3.5 |
| Electrical Data | | | |
| Impedance | | 50Ω | |
| Frequency Range | | DC To 27GHz | |
| VSWR | | ≤ 1.2 (DC To 27GHz) | |
| Insertion Loss | | ≤ 0.07 x √f(GHz) dB | |
| Insulation Resistance | | ≥ 5000MΩ | |
| Dielectric Withstanding Voltage (at sea level) | | 750 V rms | |
| Working Voltage (at sea level) | | 250 V rms | |
| Mechanical Data | | 2.92 | SMA |
| Recommended Coupling Nut Torque | | 11.47 in-lbs | 7 to 9.5 in-lbs |
| Coupling Proof Torque | | 15 in-lbs | 15 in-lbs |
| Contact Captivation-axial | | ≥ 4.9 lbs | ≥ 6.1 lbs |
| Durability (mating) | | ≥ 500 | ≥ 500 |
| Environmental Data | | | |
| Temperature Range | | -55°C to +105°C | |
| Thermal Shock | | MIL-STD-202, Method 107, Condition B | |
| Moisture Resistance | | MIL-STD-202, Method 206 | |
| Corrosion | | MIL-STD-202, Method 101, Condition B | |
| RoHS | | Compliant | |

ALS-A3K8-27-1.2

