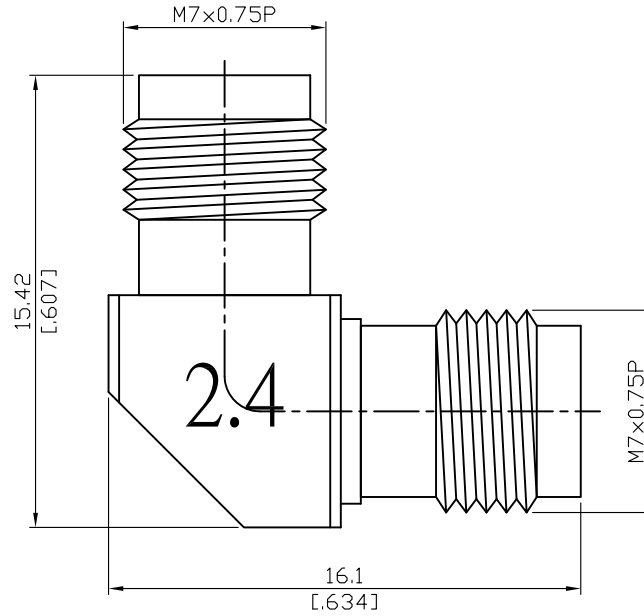


ALS-2.4/8-2.4/8-1.35	Mitered 2.4mm Jack to 2.4mm Jack 50GHz VSWR 1.35	50Ω
----------------------	---	-----



Parts	Material	Plating (Micro-inch)
Insulator	PPO	
Centre Contact	Beryllium Copper	Gold 4 Over Nickel-Phosphorus Alloy 80 Over Copper 20
Body	Stainless Steel	Passivated

--	--

This part number complies with RoHS.

Notice: JYEBAO reserves the right to make modifications deemed appropriate.

ALS-2.4/8-2.4/8-1.35	Mitered 2.4mm Jack to 2.4mm Jack 50GHz VSWR 1.35																		
<table border="0"> <tr> <td colspan="2" data-bbox="129 342 531 394">Interface</td> </tr> <tr> <td data-bbox="129 400 794 434">Standard</td> <td data-bbox="794 400 1479 434">MIL-STD-348B</td> </tr> <tr> <td data-bbox="129 445 794 483">Mechanically compatible with</td> <td data-bbox="794 445 1479 483">1.85</td> </tr> </table>		Interface		Standard	MIL-STD-348B	Mechanically compatible with	1.85												
Interface																			
Standard	MIL-STD-348B																		
Mechanically compatible with	1.85																		
<table border="0"> <tr> <td colspan="2" data-bbox="129 602 531 654">Electrical Data</td> </tr> <tr> <td data-bbox="129 660 794 694">Impedance</td> <td data-bbox="794 660 1479 694">50Ω</td> </tr> <tr> <td data-bbox="129 705 794 739">Frequency Range</td> <td data-bbox="794 705 1479 739">DC to 50GHz</td> </tr> <tr> <td data-bbox="129 750 794 784">VSWR</td> <td data-bbox="794 750 1479 784">≤ 1.35 (DC To 50GHz)</td> </tr> <tr> <td data-bbox="129 795 794 828">Insertion Loss</td> <td data-bbox="794 795 1479 828">≤ 0.07 x √f(GHz) dB</td> </tr> <tr> <td data-bbox="129 840 794 873">Insulation Resistance</td> <td data-bbox="794 840 1479 873">≥ 5000MΩ</td> </tr> <tr> <td data-bbox="129 884 794 918">Dielectric Withstanding Voltage (at sea level)</td> <td data-bbox="794 884 1479 918">500 V rms</td> </tr> <tr> <td data-bbox="129 929 794 963">Working Voltage (at sea level)</td> <td data-bbox="794 929 1479 963">150 V rms</td> </tr> <tr> <td data-bbox="129 974 794 1008">RF Leakage</td> <td data-bbox="794 974 1479 1008">≥ 100dB to 1GHz</td> </tr> </table>		Electrical Data		Impedance	50Ω	Frequency Range	DC to 50GHz	VSWR	≤ 1.35 (DC To 50GHz)	Insertion Loss	≤ 0.07 x √f(GHz) dB	Insulation Resistance	≥ 5000MΩ	Dielectric Withstanding Voltage (at sea level)	500 V rms	Working Voltage (at sea level)	150 V rms	RF Leakage	≥ 100dB to 1GHz
Electrical Data																			
Impedance	50Ω																		
Frequency Range	DC to 50GHz																		
VSWR	≤ 1.35 (DC To 50GHz)																		
Insertion Loss	≤ 0.07 x √f(GHz) dB																		
Insulation Resistance	≥ 5000MΩ																		
Dielectric Withstanding Voltage (at sea level)	500 V rms																		
Working Voltage (at sea level)	150 V rms																		
RF Leakage	≥ 100dB to 1GHz																		
<table border="0"> <tr> <td colspan="2" data-bbox="129 1151 531 1202">Mechanical Data</td> </tr> <tr> <td data-bbox="129 1209 794 1243">Recommended Coupling Nut Torque</td> <td data-bbox="794 1209 1479 1243">7.08 to 9.74 in-lbs</td> </tr> <tr> <td data-bbox="129 1254 794 1288">Coupling Proof Torque</td> <td data-bbox="794 1254 1479 1288">15 in-lbs</td> </tr> <tr> <td data-bbox="129 1299 794 1332">Contact Captivation-axial</td> <td data-bbox="794 1299 1479 1332">≥ 4.5 lbs</td> </tr> <tr> <td data-bbox="129 1344 794 1377">Durability (mating)</td> <td data-bbox="794 1344 1479 1377">≥ 500</td> </tr> </table>		Mechanical Data		Recommended Coupling Nut Torque	7.08 to 9.74 in-lbs	Coupling Proof Torque	15 in-lbs	Contact Captivation-axial	≥ 4.5 lbs	Durability (mating)	≥ 500								
Mechanical Data																			
Recommended Coupling Nut Torque	7.08 to 9.74 in-lbs																		
Coupling Proof Torque	15 in-lbs																		
Contact Captivation-axial	≥ 4.5 lbs																		
Durability (mating)	≥ 500																		
<table border="0"> <tr> <td colspan="2" data-bbox="129 1554 531 1606">Environmental Data</td> </tr> <tr> <td data-bbox="129 1612 794 1646">Temperature Range</td> <td data-bbox="794 1612 1479 1646">-55°C to +105°C</td> </tr> <tr> <td data-bbox="129 1657 794 1691">Thermal Shock</td> <td data-bbox="794 1657 1479 1691">MIL-STD-202, Method 107, Condition B</td> </tr> <tr> <td data-bbox="129 1702 794 1736">Moisture Resistance</td> <td data-bbox="794 1702 1479 1736">MIL-STD-202, Method 206</td> </tr> <tr> <td data-bbox="129 1747 794 1780">Corrosion</td> <td data-bbox="794 1747 1479 1780">MIL-STD-202, Method 101, Condition B</td> </tr> <tr> <td data-bbox="129 1792 794 1825">RoHS</td> <td data-bbox="794 1792 1479 1825">Compliant</td> </tr> </table>		Environmental Data		Temperature Range	-55°C to +105°C	Thermal Shock	MIL-STD-202, Method 107, Condition B	Moisture Resistance	MIL-STD-202, Method 206	Corrosion	MIL-STD-202, Method 101, Condition B	RoHS	Compliant						
Environmental Data																			
Temperature Range	-55°C to +105°C																		
Thermal Shock	MIL-STD-202, Method 107, Condition B																		
Moisture Resistance	MIL-STD-202, Method 206																		
Corrosion	MIL-STD-202, Method 101, Condition B																		
RoHS	Compliant																		

ALS-2.4/8-2.4/8-1.35

