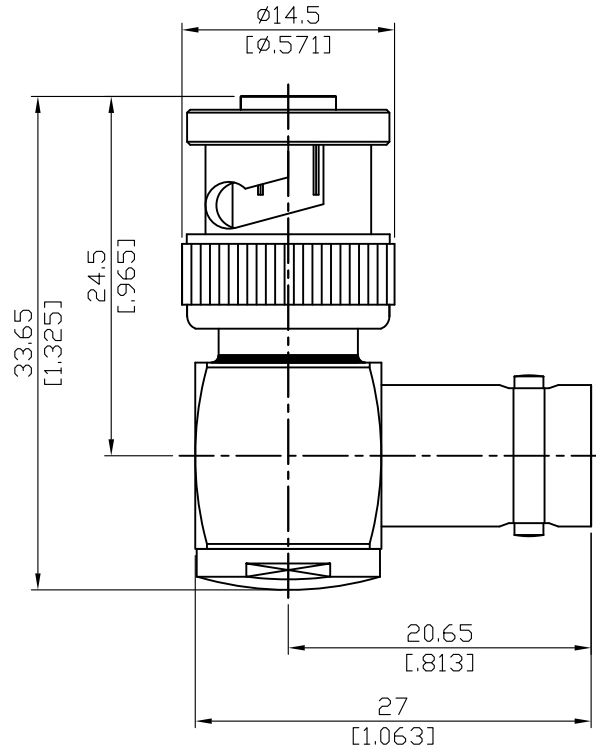


AL-H3H8	MHV Plug To MHV Jack Right Angle 0.3GHz VSWR 1.2	50Ω
---------	---	-----



Parts	Material	Plating ( Micro-inch )
Nut	Brass	Tin-Zinc-Copper-Alloy 100 Over Copper 50
Contact Pin (Jack)	Beryllium Copper	Gold 4 Over Nickel-Phosphorus Alloy 80 Over Copper 20
Ferrule	Brass	Tin-Zinc-Copper-Alloy 100 Over Copper 50
Gasket	Silicone	
Spring	SK 5	Tin-Zinc-Copper-Alloy 100 Over Copper 50
Washer	Brass	Tin-Zinc-Copper-Alloy 100 Over Copper 50
Contact Pin (Plug)	Brass	Gold 4 Over Nickel-Phosphorus Alloy 80 Over Copper 20
Insulator	Teflon	
Body	Brass	Tin-Zinc-Copper-Alloy 100 Over Copper 50
Contact Body	Brass	Tin-Zinc-Copper-Alloy 100 Over Copper 50
Coupling Nut	Brass	Tin-Zinc-Copper-Alloy 100 Over Copper 50

--	--

This part number complies with RoHS.

Notice: JYEBAO reserves the right to make modifications deemed appropriate.

AL-H3H8	MHV Plug To MHV Jack Right Angle 0.3GHz VSWR 1.2
<div style="border: 1px solid black; padding: 2px; margin-bottom: 5px;">Interface</div> <p>Standard <span style="float: right;">MIL-STD-348B</span></p>	
<div style="border: 1px solid black; padding: 2px; margin-bottom: 5px;">Electrical Data</div> <p>Impedance <span style="float: right;">50Ω</span>  Frequency Range <span style="float: right;">DC to 300MHz</span>  VSWR <span style="float: right;">≤ 1.2 (DC To 300MHz)</span>  Insulation Resistance <span style="float: right;">≥ 5000MΩ</span>  Dielectric Withstanding Voltage (at sea level) <span style="float: right;">5000 V rms</span>  Working Voltage (at sea level) <span style="float: right;">1600 V rms</span></p>	
<div style="border: 1px solid black; padding: 2px; margin-bottom: 5px;">Mechanical Data</div> <p>Recommended Coupling Nut Torque <span style="float: right;">0.6 to 2.5 in-lbs</span>  Coupling Nut Retention Force <span style="float: right;">≥ 101.2 lbs</span>  Contact Captivation-axial <span style="float: right;">≥ 6.1 lbs</span>  Durability (mating) <span style="float: right;">≥ 500</span></p>	
<div style="border: 1px solid black; padding: 2px; margin-bottom: 5px;">Environmental Data</div> <p>Temperature Range <span style="float: right;">-65°C to +165°C</span>  Thermal Shock <span style="float: right;">MIL-STD-202, Method 107, Condition B</span>  Moisture Resistance <span style="float: right;">MIL-STD-202, Method 206</span>  Corrosion <span style="float: right;">MIL-STD-202, Method 101, Condition B</span>  RoHS <span style="float: right;">Compliant</span></p>	

Notice: JYEBAO reserves the right to make modifications deemed appropriate.