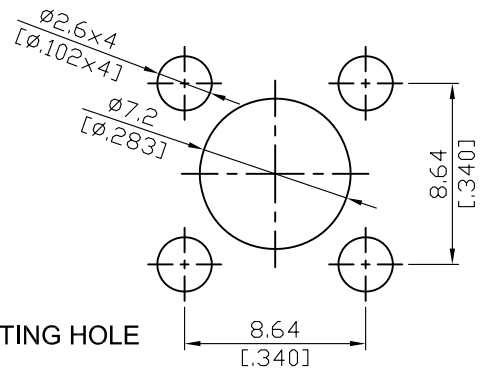
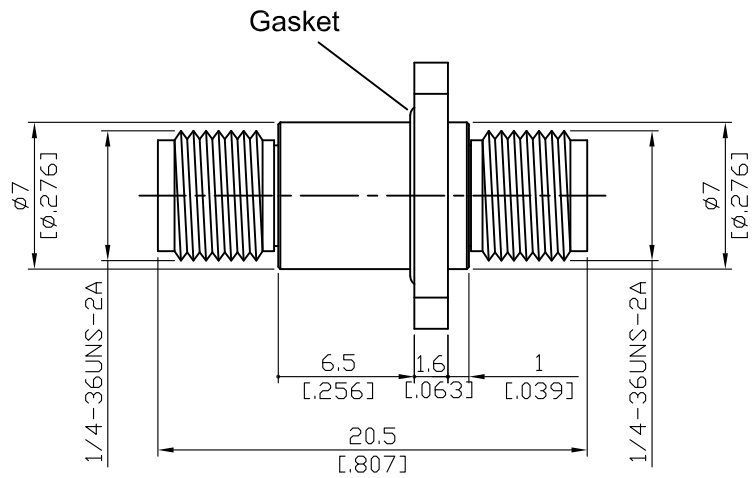
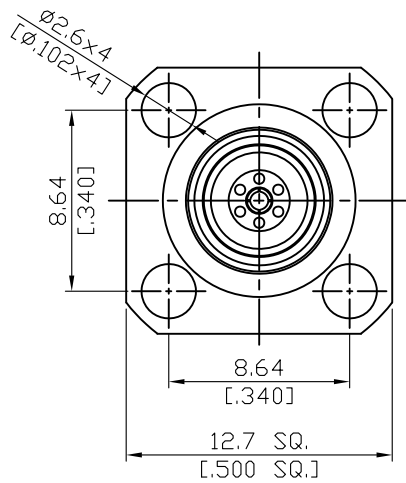


ADS-K8K8-P4-GB

Hermetic  $1 \times 10^{-8}$  cc/sec helium at 1atm  
2.92mm jack to 2.92mm jack 4 hole flange, 40GHz VSWR 1.4

50Ω



Hermiticity of  $1 \times 10^{-8}$  cc/sec of helium at 1atm

MOUNTING HOLE

Parts	Material	Plating ( Micro-inch )
Flange Body	Stainless Steel	Gold 5 Over Nickel 50
Connection Body	Stainless Steel	Passivated
Insulator	PEI	
Contact Pin	Beryllium Copper	Gold 4 Over Nickel-Phosphorus Alloy 80 Over Copper 20
Glass Seal	Kovar+Glass	Gold 4 Over Nickel-Phosphorus Alloy 80 Over Copper 20
Gasket	Silicone	

This part number complies with RoHS.

Notice: JYEBAO reserves the right to make modifications deemed appropriate.

<p>ADS-K8K8-P4-GB</p>	<p>Hermetic 1*10<sup>-8</sup> cc/sec helium at 1atm 2.92mm jack to 2.92mm jack 4 hole flange, 40GHz VSWR 1.4</p>																		
<table border="0"> <tr> <td colspan="2" data-bbox="129 342 531 392"> <p><b>Interface</b></p> </td> </tr> <tr> <td data-bbox="129 398 782 488"> <p>Standard Mechanically compatible with</p> </td> <td data-bbox="782 398 1482 488"> <p>MIL-STD-348B 3.5 &amp; SMA</p> </td> </tr> </table>		<p><b>Interface</b></p>		<p>Standard Mechanically compatible with</p>	<p>MIL-STD-348B 3.5 &amp; SMA</p>														
<p><b>Interface</b></p>																			
<p>Standard Mechanically compatible with</p>	<p>MIL-STD-348B 3.5 &amp; SMA</p>																		
<table border="0"> <tr> <td colspan="2" data-bbox="129 602 531 651"> <p><b>Electrical Data</b></p> </td> </tr> <tr> <td data-bbox="129 658 782 696"> <p>Impedance</p> </td> <td data-bbox="782 658 1482 696"> <p>50Ω</p> </td> </tr> <tr> <td data-bbox="129 703 782 741"> <p>Frequency Range</p> </td> <td data-bbox="782 703 1482 741"> <p>DC to 40GHz</p> </td> </tr> <tr> <td data-bbox="129 748 782 786"> <p>VSWR</p> </td> <td data-bbox="782 748 1482 786"> <p>≤ 1.4 (DC To 40GHz)</p> </td> </tr> <tr> <td data-bbox="129 792 782 831"> <p>Insertion Loss</p> </td> <td data-bbox="782 792 1482 831"> <p>≤ 0.08 x √f(GHz) dB</p> </td> </tr> <tr> <td data-bbox="129 837 782 875"> <p>Insulation Resistance</p> </td> <td data-bbox="782 837 1482 875"> <p>≥ 5000MΩ</p> </td> </tr> <tr> <td data-bbox="129 882 782 920"> <p>Dielectric Withstanding Voltage (at sea level)</p> </td> <td data-bbox="782 882 1482 920"> <p>750 V rms</p> </td> </tr> <tr> <td data-bbox="129 927 782 965"> <p>Working Voltage (at sea level)</p> </td> <td data-bbox="782 927 1482 965"> <p>250 V rms</p> </td> </tr> <tr> <td data-bbox="129 972 782 1010"> <p>RF Leakage</p> </td> <td data-bbox="782 972 1482 1010"> <p>≥ 100dB to 1GHz</p> </td> </tr> </table>		<p><b>Electrical Data</b></p>		<p>Impedance</p>	<p>50Ω</p>	<p>Frequency Range</p>	<p>DC to 40GHz</p>	<p>VSWR</p>	<p>≤ 1.4 (DC To 40GHz)</p>	<p>Insertion Loss</p>	<p>≤ 0.08 x √f(GHz) dB</p>	<p>Insulation Resistance</p>	<p>≥ 5000MΩ</p>	<p>Dielectric Withstanding Voltage (at sea level)</p>	<p>750 V rms</p>	<p>Working Voltage (at sea level)</p>	<p>250 V rms</p>	<p>RF Leakage</p>	<p>≥ 100dB to 1GHz</p>
<p><b>Electrical Data</b></p>																			
<p>Impedance</p>	<p>50Ω</p>																		
<p>Frequency Range</p>	<p>DC to 40GHz</p>																		
<p>VSWR</p>	<p>≤ 1.4 (DC To 40GHz)</p>																		
<p>Insertion Loss</p>	<p>≤ 0.08 x √f(GHz) dB</p>																		
<p>Insulation Resistance</p>	<p>≥ 5000MΩ</p>																		
<p>Dielectric Withstanding Voltage (at sea level)</p>	<p>750 V rms</p>																		
<p>Working Voltage (at sea level)</p>	<p>250 V rms</p>																		
<p>RF Leakage</p>	<p>≥ 100dB to 1GHz</p>																		
<table border="0"> <tr> <td colspan="2" data-bbox="129 1149 531 1198"> <p><b>Mechanical Data</b></p> </td> </tr> <tr> <td data-bbox="129 1205 782 1243"> <p>Recommended Coupling Nut Torque</p> </td> <td data-bbox="782 1205 1482 1243"> <p>11.47 in-lbs</p> </td> </tr> <tr> <td data-bbox="129 1249 782 1288"> <p>Coupling Proof Torque</p> </td> <td data-bbox="782 1249 1482 1288"> <p>15 in-lbs</p> </td> </tr> <tr> <td data-bbox="129 1294 782 1332"> <p>Contact Captivation-axial</p> </td> <td data-bbox="782 1294 1482 1332"> <p>≥ 4.9 lbs</p> </td> </tr> <tr> <td data-bbox="129 1339 782 1377"> <p>Durability (mating)</p> </td> <td data-bbox="782 1339 1482 1377"> <p>≥ 500</p> </td> </tr> </table>		<p><b>Mechanical Data</b></p>		<p>Recommended Coupling Nut Torque</p>	<p>11.47 in-lbs</p>	<p>Coupling Proof Torque</p>	<p>15 in-lbs</p>	<p>Contact Captivation-axial</p>	<p>≥ 4.9 lbs</p>	<p>Durability (mating)</p>	<p>≥ 500</p>								
<p><b>Mechanical Data</b></p>																			
<p>Recommended Coupling Nut Torque</p>	<p>11.47 in-lbs</p>																		
<p>Coupling Proof Torque</p>	<p>15 in-lbs</p>																		
<p>Contact Captivation-axial</p>	<p>≥ 4.9 lbs</p>																		
<p>Durability (mating)</p>	<p>≥ 500</p>																		
<table border="0"> <tr> <td colspan="2" data-bbox="129 1503 531 1552"> <p><b>Environmental Data</b></p> </td> </tr> <tr> <td data-bbox="129 1559 782 1597"> <p>Temperature Range</p> </td> <td data-bbox="782 1559 1482 1597"> <p>-40°C to +165°C</p> </td> </tr> <tr> <td data-bbox="129 1603 782 1641"> <p>Thermal Shock</p> </td> <td data-bbox="782 1603 1482 1641"> <p>MIL-STD-202, Method 107, Condition B</p> </td> </tr> <tr> <td data-bbox="129 1648 782 1686"> <p>Moisture Resistance</p> </td> <td data-bbox="782 1648 1482 1686"> <p>MIL-STD-202, Method 206</p> </td> </tr> <tr> <td data-bbox="129 1693 782 1731"> <p>Corrosion</p> </td> <td data-bbox="782 1693 1482 1731"> <p>MIL-STD-202, Method 101, Condition B</p> </td> </tr> <tr> <td data-bbox="129 1738 782 1776"> <p>RoHS</p> </td> <td data-bbox="782 1738 1482 1776"> <p>Compliant</p> </td> </tr> </table>		<p><b>Environmental Data</b></p>		<p>Temperature Range</p>	<p>-40°C to +165°C</p>	<p>Thermal Shock</p>	<p>MIL-STD-202, Method 107, Condition B</p>	<p>Moisture Resistance</p>	<p>MIL-STD-202, Method 206</p>	<p>Corrosion</p>	<p>MIL-STD-202, Method 101, Condition B</p>	<p>RoHS</p>	<p>Compliant</p>						
<p><b>Environmental Data</b></p>																			
<p>Temperature Range</p>	<p>-40°C to +165°C</p>																		
<p>Thermal Shock</p>	<p>MIL-STD-202, Method 107, Condition B</p>																		
<p>Moisture Resistance</p>	<p>MIL-STD-202, Method 206</p>																		
<p>Corrosion</p>	<p>MIL-STD-202, Method 101, Condition B</p>																		
<p>RoHS</p>	<p>Compliant</p>																		

Notice: JYEBAO reserves the right to make modifications deemed appropriate.

# ADS-K8K8-P4-GB

