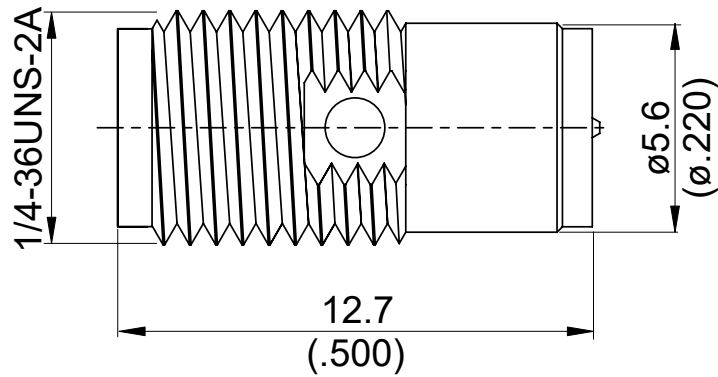


ADS-A8AQ9	SMA jack to Snap on SMA reverse polarity jack 6GHz VSWR 1.2 50Ω
-----------	----------------------------------------------------------------------------------------------------------------------------



Note: Snap on reverse polarity jack without locking mechanism.

Parts	Material	Plating (Micro-inch)
Contact Pin	Beryllium Copper	Gold 4 Over Nickel-Phosphorus Alloy 80 Over Copper 20
Insulator	Teflon	
Body	Stainless	Passivated

Weight:

This part number complies with RoHS.

Notice: JYEBAO reserves the right to make modifications deemed appropriate.

ADS-A8AQ9		SMA jack to Snap on SMA reverse polarity jack 6GHz VSWR 1.2	
Interface		SMA Jack Screw Side	SMA Reverse Polarity Jack Snap On Side
Standard		MIL-STD-348B	Per JYEBAO Snap on SMA Reverse Polarity Jack
Mechanically compatible with		2.92 & 3.5	
Electrical Data			
Impedance		50Ω	
Frequency Range		DC To 6GHz	
VSWR		≤ 1.2 (DC To 6GHz)	
Insertion Loss		≤ 0.04 x √f(GHz) dB	
Insulation Resistance		≥ 5000MΩ	
Dielectric Withstanding Voltage (at sea level)		1500 V rms	
Working Voltage (at sea level)		500 V rms	
Mechanical Data			
Recommended Coupling Nut Torque		7 to 9.5 in-lbs (Not applicable to snap on side)	
Coupling Proof Torque		15 in-lbs (Not applicable to snap on side)	
Contact Captivation-axial		≥ 6.1 lbs	
Durability (mating)		≥ 500	
Environmental Data			
Temperature Range		-65°C to +165°C	
Thermal Shock		MIL-STD-202, Method 107, Condition B	
Moisture Resistance		MIL-STD-202, Method 206	
Corrosion		MIL-STD-202, Method 101, Condition B	
RoHS		Compliant	

ADS-A8AQ9

