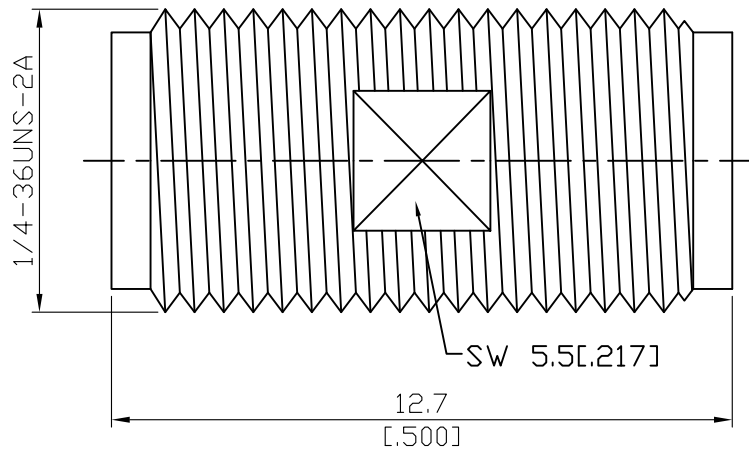


ADS-A8A8	SMA Jack to SMA Jack 18GHz VSWR1.2	50Ω
----------	---------------------------------------	-----



Parts	Material	Plating ( Micro-inch )
Contact Pin	Beryllium Copper	Gold 4 Over Nickel-Phosphorus Alloy 80 Over Copper 20
Insulator	Teflon	
Body	Stainless Steel	Passivated

Weight: 1.32g	
---------------	--

This part number complies with RoHS.

Notice: JYEBAO reserves the right to make modifications deemed appropriate.

ADS-A8A8	SMA Jack to SMA Jack 18GHz VSWR1.2																
<table border="0"> <tr> <td colspan="2" data-bbox="129 342 531 394"><b>Interface</b></td> </tr> <tr> <td data-bbox="129 405 774 439">Standard</td> <td data-bbox="774 405 1482 439">MIL-STD-348B</td> </tr> <tr> <td data-bbox="129 450 774 483">Mechanically compatible with</td> <td data-bbox="774 450 1482 483">2.92 &amp; 3.5</td> </tr> </table>		<b>Interface</b>		Standard	MIL-STD-348B	Mechanically compatible with	2.92 & 3.5										
<b>Interface</b>																	
Standard	MIL-STD-348B																
Mechanically compatible with	2.92 & 3.5																
<table border="0"> <tr> <td colspan="2" data-bbox="129 604 531 656"><b>Electrical Data</b></td> </tr> <tr> <td data-bbox="129 667 774 701">Impedance</td> <td data-bbox="774 667 1482 701">50Ω</td> </tr> <tr> <td data-bbox="129 712 774 745">Frequency Range</td> <td data-bbox="774 712 1482 745">DC To 18GHz</td> </tr> <tr> <td data-bbox="129 757 774 790">VSWR</td> <td data-bbox="774 757 1482 790">≤ 1.2 (DC To 18GHz)</td> </tr> <tr> <td data-bbox="129 801 774 835">Insertion Loss</td> <td data-bbox="774 801 1482 835">≤ 0.04 x √f(GHz) dB</td> </tr> <tr> <td data-bbox="129 846 774 880">Insulation Resistance</td> <td data-bbox="774 846 1482 880">≥ 5000MΩ</td> </tr> <tr> <td data-bbox="129 891 774 925">Dielectric Withstanding Voltage (at sea level)</td> <td data-bbox="774 891 1482 925">1500 V rms</td> </tr> <tr> <td data-bbox="129 936 774 969">Working Voltage (at sea level)</td> <td data-bbox="774 936 1482 969">500 V rms</td> </tr> </table>		<b>Electrical Data</b>		Impedance	50Ω	Frequency Range	DC To 18GHz	VSWR	≤ 1.2 (DC To 18GHz)	Insertion Loss	≤ 0.04 x √f(GHz) dB	Insulation Resistance	≥ 5000MΩ	Dielectric Withstanding Voltage (at sea level)	1500 V rms	Working Voltage (at sea level)	500 V rms
<b>Electrical Data</b>																	
Impedance	50Ω																
Frequency Range	DC To 18GHz																
VSWR	≤ 1.2 (DC To 18GHz)																
Insertion Loss	≤ 0.04 x √f(GHz) dB																
Insulation Resistance	≥ 5000MΩ																
Dielectric Withstanding Voltage (at sea level)	1500 V rms																
Working Voltage (at sea level)	500 V rms																
<table border="0"> <tr> <td colspan="2" data-bbox="129 1102 531 1153"><b>Mechanical Data</b></td> </tr> <tr> <td data-bbox="129 1164 774 1198">Recommended Coupling Nut Torque</td> <td data-bbox="774 1164 1482 1198">7 to 9.5 in-lbs</td> </tr> <tr> <td data-bbox="129 1209 774 1243">Coupling Proof Torque</td> <td data-bbox="774 1209 1482 1243">15 in-lbs</td> </tr> <tr> <td data-bbox="129 1254 774 1288">Contact Captivation-axial</td> <td data-bbox="774 1254 1482 1288">≥ 6.1 lbs</td> </tr> <tr> <td data-bbox="129 1299 774 1332">Durability (mating)</td> <td data-bbox="774 1299 1482 1332">≥ 500</td> </tr> </table>		<b>Mechanical Data</b>		Recommended Coupling Nut Torque	7 to 9.5 in-lbs	Coupling Proof Torque	15 in-lbs	Contact Captivation-axial	≥ 6.1 lbs	Durability (mating)	≥ 500						
<b>Mechanical Data</b>																	
Recommended Coupling Nut Torque	7 to 9.5 in-lbs																
Coupling Proof Torque	15 in-lbs																
Contact Captivation-axial	≥ 6.1 lbs																
Durability (mating)	≥ 500																
<table border="0"> <tr> <td colspan="2" data-bbox="129 1503 531 1554"><b>Environmental Data</b></td> </tr> <tr> <td data-bbox="129 1565 774 1599">Temperature Range</td> <td data-bbox="774 1565 1482 1599">-65°C to +165°C</td> </tr> <tr> <td data-bbox="129 1610 774 1644">Thermal Shock</td> <td data-bbox="774 1610 1482 1644">MIL-STD-202, Method 107, Condition B</td> </tr> <tr> <td data-bbox="129 1655 774 1688">Moisture Resistance</td> <td data-bbox="774 1655 1482 1688">MIL-STD-202, Method 206</td> </tr> <tr> <td data-bbox="129 1700 774 1733">Corrosion</td> <td data-bbox="774 1700 1482 1733">MIL-STD-202, Method 101, Condition B</td> </tr> <tr> <td data-bbox="129 1744 774 1778">RoHS</td> <td data-bbox="774 1744 1482 1778">Compliant</td> </tr> </table>		<b>Environmental Data</b>		Temperature Range	-65°C to +165°C	Thermal Shock	MIL-STD-202, Method 107, Condition B	Moisture Resistance	MIL-STD-202, Method 206	Corrosion	MIL-STD-202, Method 101, Condition B	RoHS	Compliant				
<b>Environmental Data</b>																	
Temperature Range	-65°C to +165°C																
Thermal Shock	MIL-STD-202, Method 107, Condition B																
Moisture Resistance	MIL-STD-202, Method 206																
Corrosion	MIL-STD-202, Method 101, Condition B																
RoHS	Compliant																

# ADS-A8A8

