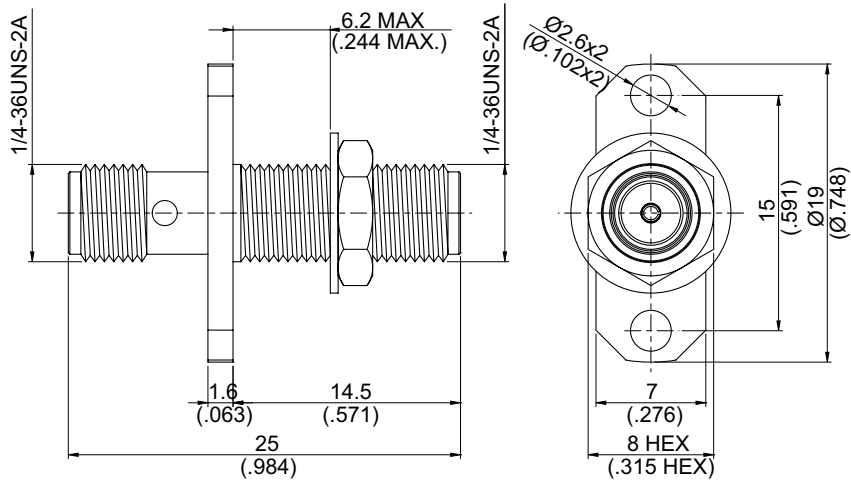
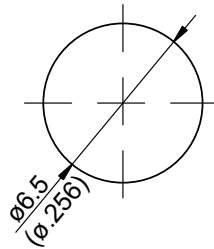


ADS-A8A8-P2-L2

**SMA jack to SMA jack 2-hole flange 50Ω**  
**18GHz VSWR 1.2**



MOUNTING HOLE:



Parts	Material	Plating (Micro-inch)
Hex Nut	Stainless Steel	Passivated
Lock Washer	Stainless Steel	Passivated
Contact Pin	Beryllium Copper	Gold 4 Over Nickel-Phosphorus Alloy 80 Over Copper 20
Insulator	Teflon	
Body	Stainless Steel	Passivated

Weight:

This part number complies with RoHS.

Notice: JYBAO reserves the right to make modifications deemed appropriate.

<b>ADS-A8A8-P2-L2</b>	<b>SMA jack to SMA jack 2-hole flange 18GHz VSWR 1.2</b>
<b>Interface</b>	
Standard	MIL-STD-348B
Mechanically compatible with	2.92 & 3.5
<b>Electrical Data</b>	
Impedance	50Ω
Frequency Range	DC To 18GHz
VSWR	≤ 1.2 (DC To 18GHz)
Insertion Loss	≤ 0.04 x √f(GHz) dB
Insulation Resistance	≥ 5000MΩ
Dielectric Withstanding Voltage (at sea level)	1500 V rms
Working Voltage (at sea level)	500 V rms
<b>Mechanical Data</b>	
Recommended Coupling Nut Torque	7 to 9.5 in-lbs
Coupling Proof Torque	15 in-lbs
Contact Captivation-axial	≥ 6.1 lbs
Durability (mating)	≥ 500
<b>Environmental Data</b>	
Temperature Range	-65°C to +165°C
Thermal Shock	MIL-STD-202, Method 107, Condition B
Moisture Resistance	MIL-STD-202, Method 206
Corrosion	MIL-STD-202, Method 101, Condition B
RoHS	Compliant

Notice: JYEBAO reserves the right to make modifications deemed appropriate.

# ADS-A8A8-P2-L2

