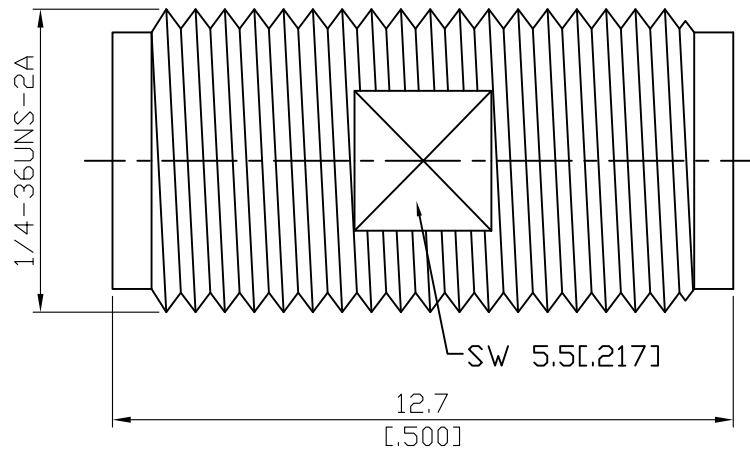


ADS-A8A8-27-1.15

SMA Jack to SMA Jack  
27GHz VSWR1.15

50Ω



Parts	Material	Plating ( Micro-inch )
Contact Pin	Beryllium Copper	Gold 4 Over Nickel-Phosphorus Alloy 80 Over Copper 20
Insulator	Teflon	
Body	Stainless Steel	Passivated

Weight: 1.32g

This part number complies with RoHS.

Notice: JYEBAO reserves the right to make modifications deemed appropriate.

ADS-A8A8-27-1.15	SMA Jack to SMA Jack 27GHz VSWR1.15																
<table border="0"> <tr> <td colspan="2" data-bbox="129 342 531 394"><b>Interface</b></td> </tr> <tr> <td data-bbox="129 398 774 436">Standard</td> <td data-bbox="774 398 1481 436">MIL-STD-348B</td> </tr> <tr> <td data-bbox="129 443 774 481">Mechanically compatible with</td> <td data-bbox="774 443 1481 481">2.92 &amp; 3.5</td> </tr> </table>		<b>Interface</b>		Standard	MIL-STD-348B	Mechanically compatible with	2.92 & 3.5										
<b>Interface</b>																	
Standard	MIL-STD-348B																
Mechanically compatible with	2.92 & 3.5																
<table border="0"> <tr> <td colspan="2" data-bbox="129 607 531 658"><b>Electrical Data</b></td> </tr> <tr> <td data-bbox="129 663 774 701">Impedance</td> <td data-bbox="774 663 1481 701">50Ω</td> </tr> <tr> <td data-bbox="129 707 774 745">Frequency Range</td> <td data-bbox="774 707 1481 745">DC To 27GHz</td> </tr> <tr> <td data-bbox="129 752 774 790">VSWR</td> <td data-bbox="774 752 1481 790">≤ 1.15 (DC To 27GHz)</td> </tr> <tr> <td data-bbox="129 797 774 835">Insertion Loss</td> <td data-bbox="774 797 1481 835">≤ 0.04 x √f(GHz) dB</td> </tr> <tr> <td data-bbox="129 842 774 880">Insulation Resistance</td> <td data-bbox="774 842 1481 880">≥ 5000MΩ</td> </tr> <tr> <td data-bbox="129 887 774 925">Dielectric Withstanding Voltage (at sea level)</td> <td data-bbox="774 887 1481 925">1500 V rms</td> </tr> <tr> <td data-bbox="129 931 774 969">Working Voltage (at sea level)</td> <td data-bbox="774 931 1481 969">500 V rms</td> </tr> </table>		<b>Electrical Data</b>		Impedance	50Ω	Frequency Range	DC To 27GHz	VSWR	≤ 1.15 (DC To 27GHz)	Insertion Loss	≤ 0.04 x √f(GHz) dB	Insulation Resistance	≥ 5000MΩ	Dielectric Withstanding Voltage (at sea level)	1500 V rms	Working Voltage (at sea level)	500 V rms
<b>Electrical Data</b>																	
Impedance	50Ω																
Frequency Range	DC To 27GHz																
VSWR	≤ 1.15 (DC To 27GHz)																
Insertion Loss	≤ 0.04 x √f(GHz) dB																
Insulation Resistance	≥ 5000MΩ																
Dielectric Withstanding Voltage (at sea level)	1500 V rms																
Working Voltage (at sea level)	500 V rms																
<table border="0"> <tr> <td colspan="2" data-bbox="129 1102 531 1153"><b>Mechanical Data</b></td> </tr> <tr> <td data-bbox="129 1158 774 1196">Recommended Coupling Nut Torque</td> <td data-bbox="774 1158 1481 1196">7 to 9.5 in-lbs</td> </tr> <tr> <td data-bbox="129 1202 774 1240">Coupling Proof Torque</td> <td data-bbox="774 1202 1481 1240">15 in-lbs</td> </tr> <tr> <td data-bbox="129 1247 774 1285">Contact Captivation-axial</td> <td data-bbox="774 1247 1481 1285">≥ 6.1 lbs</td> </tr> <tr> <td data-bbox="129 1292 774 1330">Durability (mating)</td> <td data-bbox="774 1292 1481 1330">≥ 500</td> </tr> </table>		<b>Mechanical Data</b>		Recommended Coupling Nut Torque	7 to 9.5 in-lbs	Coupling Proof Torque	15 in-lbs	Contact Captivation-axial	≥ 6.1 lbs	Durability (mating)	≥ 500						
<b>Mechanical Data</b>																	
Recommended Coupling Nut Torque	7 to 9.5 in-lbs																
Coupling Proof Torque	15 in-lbs																
Contact Captivation-axial	≥ 6.1 lbs																
Durability (mating)	≥ 500																
<table border="0"> <tr> <td colspan="2" data-bbox="129 1503 531 1554"><b>Environmental Data</b></td> </tr> <tr> <td data-bbox="129 1559 774 1597">Temperature Range</td> <td data-bbox="774 1559 1481 1597">-65°C to +165°C</td> </tr> <tr> <td data-bbox="129 1603 774 1641">Thermal Shock</td> <td data-bbox="774 1603 1481 1641">MIL-STD-202, Method 107, Condition B</td> </tr> <tr> <td data-bbox="129 1648 774 1686">Moisture Resistance</td> <td data-bbox="774 1648 1481 1686">MIL-STD-202, Method 206</td> </tr> <tr> <td data-bbox="129 1693 774 1731">Corrosion</td> <td data-bbox="774 1693 1481 1731">MIL-STD-202, Method 101, Condition B</td> </tr> <tr> <td data-bbox="129 1738 774 1776">RoHS</td> <td data-bbox="774 1738 1481 1776">Compliant</td> </tr> </table>		<b>Environmental Data</b>		Temperature Range	-65°C to +165°C	Thermal Shock	MIL-STD-202, Method 107, Condition B	Moisture Resistance	MIL-STD-202, Method 206	Corrosion	MIL-STD-202, Method 101, Condition B	RoHS	Compliant				
<b>Environmental Data</b>																	
Temperature Range	-65°C to +165°C																
Thermal Shock	MIL-STD-202, Method 107, Condition B																
Moisture Resistance	MIL-STD-202, Method 206																
Corrosion	MIL-STD-202, Method 101, Condition B																
RoHS	Compliant																

# ADS-A8A8-27-1.15

