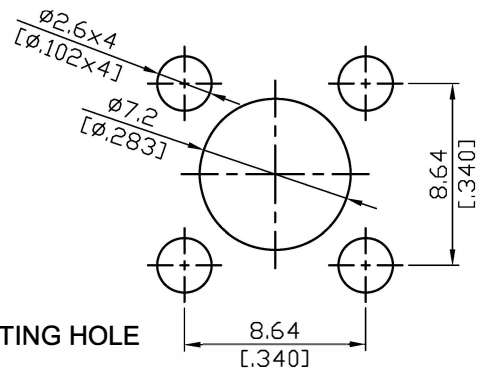
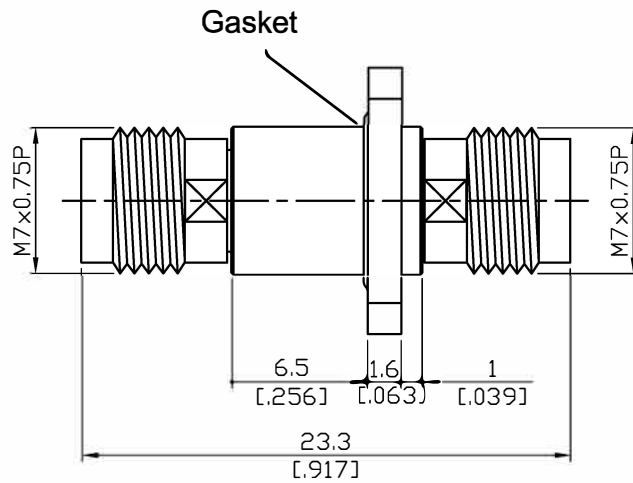
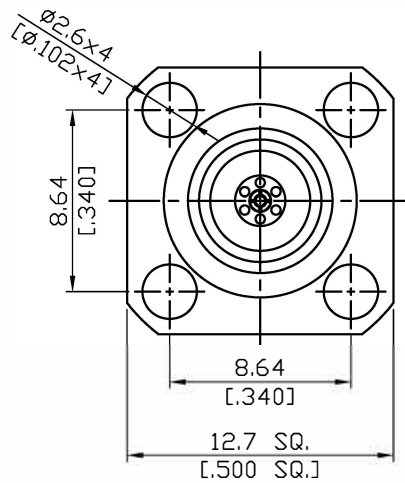


ADS-24/8-24/8-P4-GB-1.35

Hermetic 1×10^{-8} cc/sec helium at 1atm
2.4mm jack to 2.4mm jack 4 hole flange; 50GHz VSWR 1.35

50Ω



Hermiticity of 1×10^{-8} cc/sec Of Helium At 1atm

MOUNTING HOLE

Parts	Material	Plating (Micro-inch)
Flange Body	Stainless Steel	Gold 50 Over Nickel 50
Connector Body	Stainless Steel	Passivated
Insulator	PEI	
Contact Pin	Beryllium Copper	Gold 4 Over Nickel-Phosphorus Alloy 80 Over Copper 20
Glass Seal	Kover+Glass	Gold 4 Over Nickel-Phosphorus Alloy 80 Over Copper 20
Gasket	Silicone	

This part number complies with RoHS.

Notice: JYEBAO reserves the right to make modifications deemed appropriate.

ADS-24/8-24/8-P4-GB-1.35	Hermetic 1*10 ⁻⁸ cc/sec helium at 1atm 2.4mm jack to 2.4mm jack 4 hole flange; 50GHz VSWR 1.35																
<table border="0"> <tr> <td colspan="2" data-bbox="129 342 528 392">Interface</td> </tr> <tr> <td data-bbox="129 398 790 436">Standard</td> <td data-bbox="790 398 1474 436">MIL-STD-348B</td> </tr> <tr> <td data-bbox="129 443 790 481">Mechanically compatible with</td> <td data-bbox="790 443 1474 481">1.85</td> </tr> </table>		Interface		Standard	MIL-STD-348B	Mechanically compatible with	1.85										
Interface																	
Standard	MIL-STD-348B																
Mechanically compatible with	1.85																
<table border="0"> <tr> <td colspan="2" data-bbox="129 602 528 651">Electrical Data</td> </tr> <tr> <td data-bbox="129 658 790 696">Impedance</td> <td data-bbox="790 658 1474 696">50Ω</td> </tr> <tr> <td data-bbox="129 703 790 741">Frequency Range</td> <td data-bbox="790 703 1474 741">DC to 50GHz</td> </tr> <tr> <td data-bbox="129 748 790 786">VSWR</td> <td data-bbox="790 748 1474 786">≤ 1.35 (DC to 50GHz)</td> </tr> <tr> <td data-bbox="129 792 790 831">Insertion Loss</td> <td data-bbox="790 792 1474 831">≤ 0.08 x √f(GHz) dB</td> </tr> <tr> <td data-bbox="129 837 790 875">Insulation Resistance</td> <td data-bbox="790 837 1474 875">≥ 5000MΩ</td> </tr> <tr> <td data-bbox="129 882 790 920">Dielectric Withstanding Voltage (at sea level)</td> <td data-bbox="790 882 1474 920">500 V rms</td> </tr> <tr> <td data-bbox="129 927 790 965">Working Voltage (at sea level)</td> <td data-bbox="790 927 1474 965">150 V rms</td> </tr> </table>		Electrical Data		Impedance	50Ω	Frequency Range	DC to 50GHz	VSWR	≤ 1.35 (DC to 50GHz)	Insertion Loss	≤ 0.08 x √f(GHz) dB	Insulation Resistance	≥ 5000MΩ	Dielectric Withstanding Voltage (at sea level)	500 V rms	Working Voltage (at sea level)	150 V rms
Electrical Data																	
Impedance	50Ω																
Frequency Range	DC to 50GHz																
VSWR	≤ 1.35 (DC to 50GHz)																
Insertion Loss	≤ 0.08 x √f(GHz) dB																
Insulation Resistance	≥ 5000MΩ																
Dielectric Withstanding Voltage (at sea level)	500 V rms																
Working Voltage (at sea level)	150 V rms																
<table border="0"> <tr> <td colspan="2" data-bbox="129 1099 528 1149">Mechanical Data</td> </tr> <tr> <td data-bbox="129 1155 790 1193">Recommended Coupling Nut Torque</td> <td data-bbox="790 1155 1474 1193">7.08 to 9.74 inch lbs</td> </tr> <tr> <td data-bbox="129 1200 790 1238">Coupling Proof Torque</td> <td data-bbox="790 1200 1474 1238">15 inch lbs</td> </tr> <tr> <td data-bbox="129 1245 790 1283">Contact Captivation-axial</td> <td data-bbox="790 1245 1474 1283">≥ 4.5 lbs</td> </tr> <tr> <td data-bbox="129 1290 790 1328">Durability (mating)</td> <td data-bbox="790 1290 1474 1328">≥ 500</td> </tr> </table>		Mechanical Data		Recommended Coupling Nut Torque	7.08 to 9.74 inch lbs	Coupling Proof Torque	15 inch lbs	Contact Captivation-axial	≥ 4.5 lbs	Durability (mating)	≥ 500						
Mechanical Data																	
Recommended Coupling Nut Torque	7.08 to 9.74 inch lbs																
Coupling Proof Torque	15 inch lbs																
Contact Captivation-axial	≥ 4.5 lbs																
Durability (mating)	≥ 500																
<table border="0"> <tr> <td colspan="2" data-bbox="129 1498 528 1547">Environmental Data</td> </tr> <tr> <td data-bbox="129 1554 790 1592">Temperature Range</td> <td data-bbox="790 1554 1474 1592">-40°C to +165°C</td> </tr> <tr> <td data-bbox="129 1599 790 1637">Thermal Shock</td> <td data-bbox="790 1599 1474 1637">MIL-STD-202, Method 107, Condition B</td> </tr> <tr> <td data-bbox="129 1644 790 1682">Moisture Resistance</td> <td data-bbox="790 1644 1474 1682">MIL-STD-202, Method 206</td> </tr> <tr> <td data-bbox="129 1688 790 1727">Corrosion</td> <td data-bbox="790 1688 1474 1727">MIL-STD-202, Method 101, Condition B</td> </tr> <tr> <td data-bbox="129 1733 790 1771">RoHS</td> <td data-bbox="790 1733 1474 1771">Compliant</td> </tr> </table>		Environmental Data		Temperature Range	-40°C to +165°C	Thermal Shock	MIL-STD-202, Method 107, Condition B	Moisture Resistance	MIL-STD-202, Method 206	Corrosion	MIL-STD-202, Method 101, Condition B	RoHS	Compliant				
Environmental Data																	
Temperature Range	-40°C to +165°C																
Thermal Shock	MIL-STD-202, Method 107, Condition B																
Moisture Resistance	MIL-STD-202, Method 206																
Corrosion	MIL-STD-202, Method 101, Condition B																
RoHS	Compliant																

ADS-24/8-24/8-P4-GB-1.35

