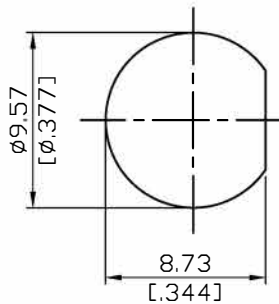
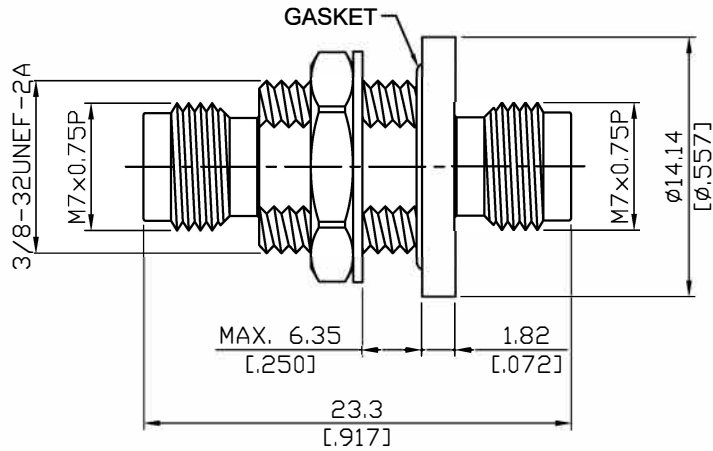
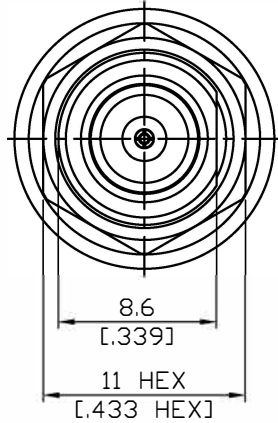


ADS-24/8-24/8-BF-GB-1.35

Hermetic 1×10^{-8} cc/sec of helium at 1atm
2.4mm jack to 2.4mm jack bulkhead; 50GHz VSWR 1.35

50Ω



MOUNTING HOLE

Hermeticity of 1×10^{-8} cc/sec helium at 1 atm

Parts	Material	Plating (Micro-inch)
Body	Stainless Steel	Gold 5 Over Nickel 50
Body	Stainless Steel	Passivated
Insulator	PEI	
Contact Pin	Beryllium Copper	Gold 4 Over Nickel-Phosphorus Alloy 80 Over Copper 20
Glass Seal	Kovar+ Glass	Gold 4 Over Nickel-Phosphorus Alloy 80 Over Copper 20
Gasket	VITON	
Lock Washer	Stainless Steel	Passivated
Hex Nut	Stainless Steel	Passivated

This part number complies with RoHS.

Notice: JYEBAO reserves the right to make modifications deemed appropriate.

ADS-24/8-24/8-BF-GB-1.35	Hermetic 1*10 ⁻⁸ cc/sec of helium at 1atm 2.4mm jack to 2.4mm jack bulkhead; 50GHz VSWR 1.35																
<table border="0"> <tr> <td colspan="2" data-bbox="129 344 531 394">Interface</td> </tr> <tr> <td data-bbox="129 405 774 439">Standard</td> <td data-bbox="794 405 1011 439">MIL-STD-348B</td> </tr> <tr> <td data-bbox="129 450 774 483">Mechanically compatible with</td> <td data-bbox="794 450 863 483">1.85</td> </tr> </table>		Interface		Standard	MIL-STD-348B	Mechanically compatible with	1.85										
Interface																	
Standard	MIL-STD-348B																
Mechanically compatible with	1.85																
<table border="0"> <tr> <td colspan="2" data-bbox="129 607 531 656">Electrical Data</td> </tr> <tr> <td data-bbox="129 667 774 701">Impedance</td> <td data-bbox="794 667 858 701">50Ω</td> </tr> <tr> <td data-bbox="129 712 774 745">Frequency Range</td> <td data-bbox="794 712 991 745">DC to 50GHz</td> </tr> <tr> <td data-bbox="129 757 774 790">VSWR</td> <td data-bbox="794 757 1115 790">≤ 1.35 (DC to 50GHz)</td> </tr> <tr> <td data-bbox="129 801 774 835">Insertion Loss</td> <td data-bbox="794 801 1086 835">≤ 0.08 x √f(GHz) dB</td> </tr> <tr> <td data-bbox="129 846 774 880">Insulation Resistance</td> <td data-bbox="794 846 954 880">≥ 5000MΩ</td> </tr> <tr> <td data-bbox="129 902 774 936">Dielectric Withstanding Voltage (at sea level)</td> <td data-bbox="794 902 943 936">500 V rms</td> </tr> <tr> <td data-bbox="129 947 774 981">Working Voltage (at sea level)</td> <td data-bbox="794 947 943 981">150 V rms</td> </tr> </table>		Electrical Data		Impedance	50Ω	Frequency Range	DC to 50GHz	VSWR	≤ 1.35 (DC to 50GHz)	Insertion Loss	≤ 0.08 x √f(GHz) dB	Insulation Resistance	≥ 5000MΩ	Dielectric Withstanding Voltage (at sea level)	500 V rms	Working Voltage (at sea level)	150 V rms
Electrical Data																	
Impedance	50Ω																
Frequency Range	DC to 50GHz																
VSWR	≤ 1.35 (DC to 50GHz)																
Insertion Loss	≤ 0.08 x √f(GHz) dB																
Insulation Resistance	≥ 5000MΩ																
Dielectric Withstanding Voltage (at sea level)	500 V rms																
Working Voltage (at sea level)	150 V rms																
<table border="0"> <tr> <td colspan="2" data-bbox="129 1106 531 1155">Mechanical Data</td> </tr> <tr> <td data-bbox="129 1167 774 1200">Recommended Coupling Nut Torque</td> <td data-bbox="794 1167 1086 1200">7.08 to 9.74 inch lbs</td> </tr> <tr> <td data-bbox="129 1211 774 1245">Coupling Proof Torque</td> <td data-bbox="794 1211 954 1245">15 inch lbs</td> </tr> <tr> <td data-bbox="129 1256 774 1290">Contact Captivation-axial</td> <td data-bbox="794 1256 927 1290">≥ 4.5 lbs</td> </tr> <tr> <td data-bbox="129 1301 774 1335">Durability (mating)</td> <td data-bbox="794 1301 884 1335">≥ 500</td> </tr> </table>		Mechanical Data		Recommended Coupling Nut Torque	7.08 to 9.74 inch lbs	Coupling Proof Torque	15 inch lbs	Contact Captivation-axial	≥ 4.5 lbs	Durability (mating)	≥ 500						
Mechanical Data																	
Recommended Coupling Nut Torque	7.08 to 9.74 inch lbs																
Coupling Proof Torque	15 inch lbs																
Contact Captivation-axial	≥ 4.5 lbs																
Durability (mating)	≥ 500																
<table border="0"> <tr> <td colspan="2" data-bbox="129 1509 531 1559">Environmental Data</td> </tr> <tr> <td data-bbox="129 1570 774 1603">Temperature Range</td> <td data-bbox="794 1570 1035 1603">-10°C to +165°C</td> </tr> <tr> <td data-bbox="129 1615 774 1648">Thermal Shock</td> <td data-bbox="794 1615 1362 1648">MIL-STD-202, Method 107, Condition B</td> </tr> <tr> <td data-bbox="129 1659 774 1693">Moisture Resistance</td> <td data-bbox="794 1659 1179 1693">MIL-STD-202, Method 206</td> </tr> <tr> <td data-bbox="129 1704 774 1738">Corrosion</td> <td data-bbox="794 1704 1362 1738">MIL-STD-202, Method 101, Condition B</td> </tr> <tr> <td data-bbox="129 1749 774 1783">RoHS</td> <td data-bbox="794 1749 943 1783">Compliant</td> </tr> </table>		Environmental Data		Temperature Range	-10°C to +165°C	Thermal Shock	MIL-STD-202, Method 107, Condition B	Moisture Resistance	MIL-STD-202, Method 206	Corrosion	MIL-STD-202, Method 101, Condition B	RoHS	Compliant				
Environmental Data																	
Temperature Range	-10°C to +165°C																
Thermal Shock	MIL-STD-202, Method 107, Condition B																
Moisture Resistance	MIL-STD-202, Method 206																
Corrosion	MIL-STD-202, Method 101, Condition B																
RoHS	Compliant																

ADS-24/8-24/8-BF-GB-1.35

