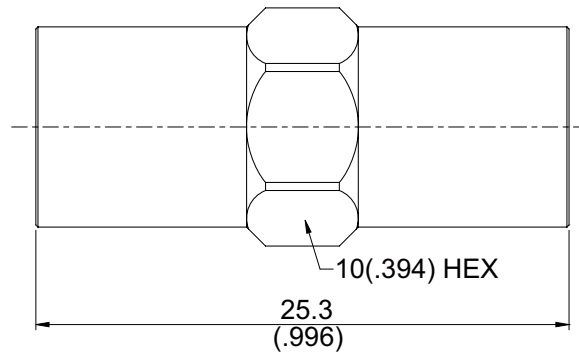


AD-FME3FME3/PR

FME Plug To FME Plug
1GHz VSWR 1.2, 2GHz VSWR 1.3

50Ω



Parts	Material	Plating (Micro-inch)
Contact Pin	Brass	Gold 4 Over Nickel-Phosphorus Alloy 80 Over Copper 20
Insulator	POM	
Body	Brass	Tin-Zinc-Copper-Alloy 100 Over Copper 50

Weight:

This part number complies with RoHS.

Notice: JYBAO reserves the right to make modifications deemed appropriate.

AD-FME3FME3/PR	FME Plug To FME Plug 1GHz VSWR 1.2, 2GHz VSWR 1.3
Interface Standard	Jyebao FME series
Electrical Data Impedance Frequency Range VSWR Insulation Resistance Dielectric Withstanding Voltage (at sea level) Working Voltage (at sea level)	50Ω DC to 2GHz ≤ 1.2 (1GHz); ≤ 1.3 (2GHz) ≥ 5000MΩ 1000 V rms 500 V rms
Mechanical Data Recommended Coupling Nut Torque Durability (mating)	≤ 17 in-lbs ≥ 500
Environmental Data Temperature Range Thermal Shock Moisture Resistance Corrosion RoHS	-55°C to +85°C MIL-STD-202, Method 107, Condition B MIL-STD-202, Method 206 MIL-STD-202, Method 101, Condition B Compliant

Notice: JYEBAO reserves the right to make modifications deemed appropriate.