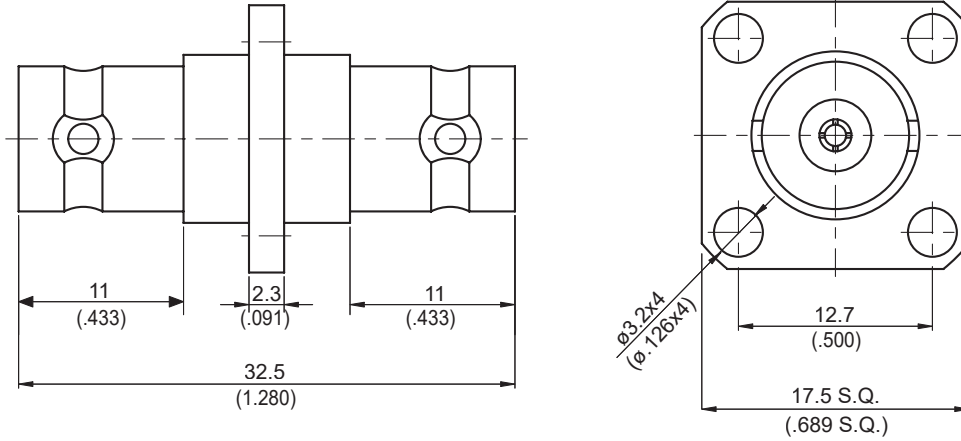


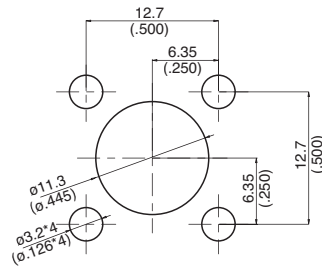
AD-B8B8-P4-75

BNC Jack to BNC Jack 4-Hole Flange
3GHz VSWR 1.2

75Ω



MOUNTING HOLE :



Parts	Material	Plating (Micro-inch)
Contact Pin	Phosphor Bronze	Gold 4 Over Nickel-Phosphorus Alloy 80 Over Copper 20
Insulator	Teflon	
Body	Brass	Tin-Zinc-Copper-Alloy 100 Over Copper 50

Weight: 13.38 g

This part number complies with RoHS.

Notice: JYEBAO reserves the right to make modifications deemed appropriate.

AD-B8B8-P4-75	BNC Jack to BNC Jack 4-Hole Flange 3GHz VSWR 1.2		75Ω																																
<table border="0"> <tr> <td data-bbox="113 342 531 394">Interface</td> <td colspan="3"></td> </tr> <tr> <td data-bbox="113 394 531 539">Standard</td> <td colspan="3" data-bbox="531 394 1482 539">MIL-STD-348B</td> </tr> </table>				Interface				Standard	MIL-STD-348B																										
Interface																																			
Standard	MIL-STD-348B																																		
<table border="0"> <tr> <td data-bbox="113 555 531 607">Electrical Data</td> <td colspan="3"></td> </tr> <tr> <td data-bbox="113 607 531 658">Impedance</td> <td colspan="3" data-bbox="531 607 1482 658">75Ω</td> </tr> <tr> <td data-bbox="113 658 531 710">Frequency Range</td> <td colspan="3" data-bbox="531 658 1482 710">DC to 3GHz</td> </tr> <tr> <td data-bbox="113 710 531 761">VSWR</td> <td colspan="3" data-bbox="531 710 1482 761">≤ 1.2 (DC To 3GHz)</td> </tr> <tr> <td data-bbox="113 761 531 813">Insertion Loss</td> <td colspan="3" data-bbox="531 761 1482 813">≤ 0.06 x √f(GHz) dB</td> </tr> <tr> <td data-bbox="113 813 531 864">Insulation Resistance</td> <td colspan="3" data-bbox="531 813 1482 864">≥ 5000MΩ</td> </tr> <tr> <td data-bbox="113 864 531 916">Dielectric Withstanding Voltage (at sea level)</td> <td colspan="3" data-bbox="531 864 1482 916">1500 V rms</td> </tr> <tr> <td data-bbox="113 916 531 967">Working Voltage (at sea level)</td> <td colspan="3" data-bbox="531 916 1482 967">500 V rms</td> </tr> </table>				Electrical Data				Impedance	75Ω			Frequency Range	DC to 3GHz			VSWR	≤ 1.2 (DC To 3GHz)			Insertion Loss	≤ 0.06 x √f(GHz) dB			Insulation Resistance	≥ 5000MΩ			Dielectric Withstanding Voltage (at sea level)	1500 V rms			Working Voltage (at sea level)	500 V rms		
Electrical Data																																			
Impedance	75Ω																																		
Frequency Range	DC to 3GHz																																		
VSWR	≤ 1.2 (DC To 3GHz)																																		
Insertion Loss	≤ 0.06 x √f(GHz) dB																																		
Insulation Resistance	≥ 5000MΩ																																		
Dielectric Withstanding Voltage (at sea level)	1500 V rms																																		
Working Voltage (at sea level)	500 V rms																																		
<table border="0"> <tr> <td data-bbox="113 1052 531 1104">Mechanical Data</td> <td colspan="3"></td> </tr> <tr> <td data-bbox="113 1104 531 1155">Recommended Coupling Nut Torque</td> <td colspan="3" data-bbox="531 1104 1482 1155">0.6 to 2.5 in-lbs</td> </tr> <tr> <td data-bbox="113 1155 531 1207">Contact Captivation-axial</td> <td colspan="3" data-bbox="531 1155 1482 1207">≥ 6.1 lbs</td> </tr> <tr> <td data-bbox="113 1207 531 1258">Durability (mating)</td> <td colspan="3" data-bbox="531 1207 1482 1258">≥ 500</td> </tr> </table>				Mechanical Data				Recommended Coupling Nut Torque	0.6 to 2.5 in-lbs			Contact Captivation-axial	≥ 6.1 lbs			Durability (mating)	≥ 500																		
Mechanical Data																																			
Recommended Coupling Nut Torque	0.6 to 2.5 in-lbs																																		
Contact Captivation-axial	≥ 6.1 lbs																																		
Durability (mating)	≥ 500																																		
<table border="0"> <tr> <td data-bbox="113 1406 531 1458">Environmental Data</td> <td colspan="3"></td> </tr> <tr> <td data-bbox="113 1458 531 1509">Temperature Range</td> <td colspan="3" data-bbox="531 1458 1482 1509">-65°C to +165°C</td> </tr> <tr> <td data-bbox="113 1509 531 1561">Thermal Shock</td> <td colspan="3" data-bbox="531 1509 1482 1561">MIL-STD-202, Method 107, Condition B</td> </tr> <tr> <td data-bbox="113 1561 531 1612">Moisture Resistance</td> <td colspan="3" data-bbox="531 1561 1482 1612">MIL-STD-202, Method 206</td> </tr> <tr> <td data-bbox="113 1612 531 1664">Corrosion</td> <td colspan="3" data-bbox="531 1612 1482 1664">MIL-STD-202, Method 101, Condition B</td> </tr> <tr> <td data-bbox="113 1664 531 1715">RoHS</td> <td colspan="3" data-bbox="531 1664 1482 1715">Compliant</td> </tr> </table>				Environmental Data				Temperature Range	-65°C to +165°C			Thermal Shock	MIL-STD-202, Method 107, Condition B			Moisture Resistance	MIL-STD-202, Method 206			Corrosion	MIL-STD-202, Method 101, Condition B			RoHS	Compliant										
Environmental Data																																			
Temperature Range	-65°C to +165°C																																		
Thermal Shock	MIL-STD-202, Method 107, Condition B																																		
Moisture Resistance	MIL-STD-202, Method 206																																		
Corrosion	MIL-STD-202, Method 101, Condition B																																		
RoHS	Compliant																																		

Notice: JYEBAO reserves the right to make modifications deemed appropriate.