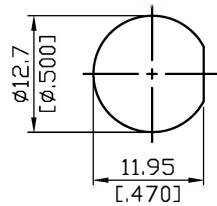
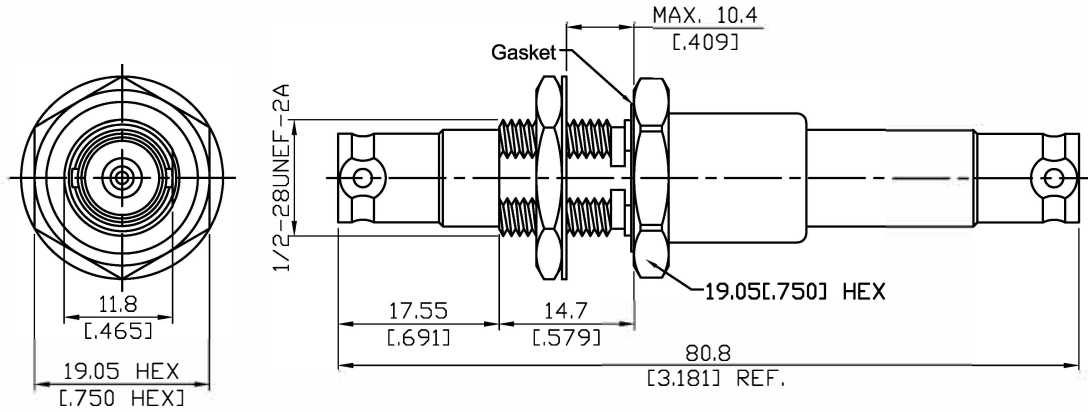


AD-10KV8-10KV8-BF/HS	Hermetic ( $1 \times 10^{-6}$ cc/sec at 1atm helium) 10KV jack to 10KV jack bulkhead	50Ω
----------------------	---	-----



MOUNTING HOLE

Parts	Material	Plating ( Micro-inch )
Body	Brass	Tin-Zinc-Copper-Alloy 100 Over Copper 50
Insulator	High Density PE	
Contact Pin	Brass	Gold 4 Over Nickel-Phosphorus Alloy 80 Over Copper 20
Gasket	Silicone	
Lock Washer	Brass	Tin-Zinc-Copper-Alloy 100 Over Copper 50
Hex Nut	Brass	Tin-Zinc-Copper-Alloy 100 Over Copper 50

This part number complies with RoHS.

Notice: JYEBAO reserves the right to make modifications deemed appropriate.

AD-10KV8-10KV8-BF/HS	Hermetic ( $1 \times 10^{-6}$ cc/sec at 1atm helium) 10KV jack to 10KV jack bulkhead										
<table border="0"> <tr> <td data-bbox="129 344 531 394"><b>Interface</b></td> <td></td> </tr> <tr> <td data-bbox="129 405 555 488">Standard Mechanically compatible with</td> <td data-bbox="794 405 1182 488">Per Jyebao 10KV interface Kings 10KV series</td> </tr> </table>		<b>Interface</b>		Standard Mechanically compatible with	Per Jyebao 10KV interface Kings 10KV series						
<b>Interface</b>											
Standard Mechanically compatible with	Per Jyebao 10KV interface Kings 10KV series										
<table border="0"> <tr> <td data-bbox="129 562 531 611"><b>Electrical Data</b></td> <td></td> </tr> <tr> <td data-bbox="129 618 555 651">Impedance</td> <td data-bbox="794 618 991 651">Non constant</td> </tr> <tr> <td data-bbox="129 663 555 696">Insulation Resistance</td> <td data-bbox="794 663 922 696">1000GΩ</td> </tr> <tr> <td data-bbox="129 707 555 741">Test Voltage (at sea level)</td> <td data-bbox="794 707 927 741">15KVDC</td> </tr> <tr> <td data-bbox="129 752 555 786">Working Voltage (at sea level)</td> <td data-bbox="794 752 927 786">10KVDC</td> </tr> </table>		<b>Electrical Data</b>		Impedance	Non constant	Insulation Resistance	1000GΩ	Test Voltage (at sea level)	15KVDC	Working Voltage (at sea level)	10KVDC
<b>Electrical Data</b>											
Impedance	Non constant										
Insulation Resistance	1000GΩ										
Test Voltage (at sea level)	15KVDC										
Working Voltage (at sea level)	10KVDC										
<table border="0"> <tr> <td data-bbox="129 976 531 1025"><b>Environmental Data</b></td> <td></td> </tr> <tr> <td data-bbox="129 1032 424 1066">Temperature Range</td> <td data-bbox="794 1032 1018 1066">-55°C to +85°C</td> </tr> <tr> <td data-bbox="129 1077 272 1111">Corrosion</td> <td data-bbox="794 1077 1366 1111">MIL-STD-202, Method 101, Condition B</td> </tr> <tr> <td data-bbox="129 1122 220 1155">RoHS</td> <td data-bbox="794 1122 946 1155">Compliant</td> </tr> </table>		<b>Environmental Data</b>		Temperature Range	-55°C to +85°C	Corrosion	MIL-STD-202, Method 101, Condition B	RoHS	Compliant		
<b>Environmental Data</b>											
Temperature Range	-55°C to +85°C										
Corrosion	MIL-STD-202, Method 101, Condition B										
RoHS	Compliant										

Notice: JYEBAO reserves the right to make modifications deemed appropriate.