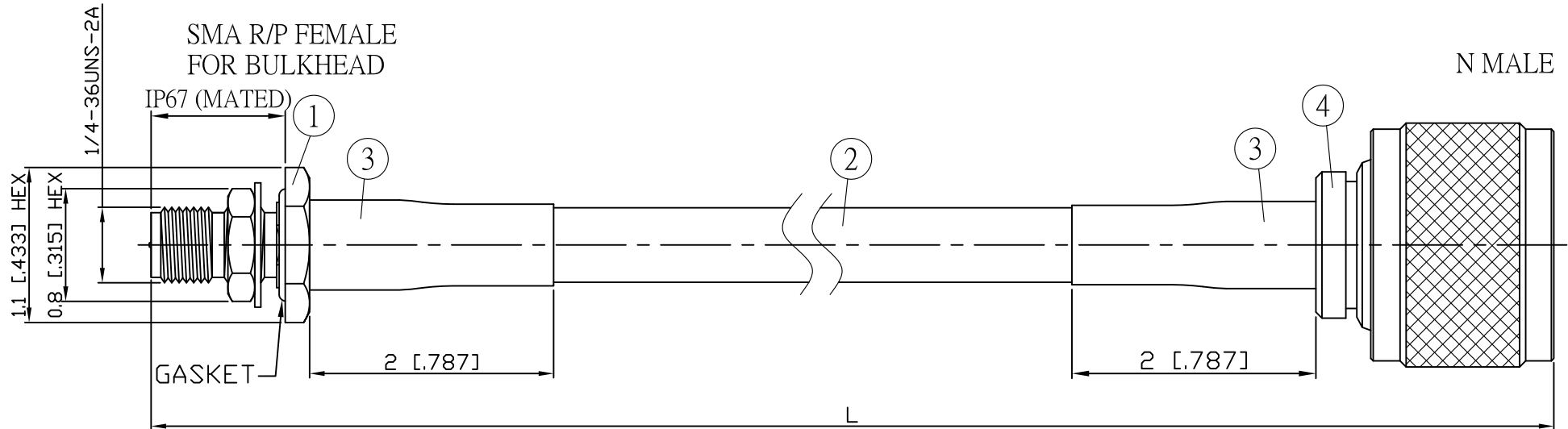
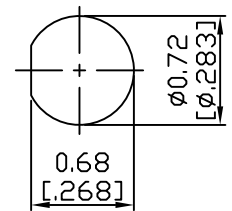


NO.	COMPONENTS	IMPEDANCE
1	SMA REVERSE POLARITY FEMALE FOR BULKHEAD	50 OHM
2	JB Y240	50 OHM
3	HEAT SHRINKING TUBE	
4	N MALE	50 OHM

REVISION			
REV.	DESCRIPTON	DATE	APPROVED
-	INITIAL RELEASE	2012/08/15	
A	N3100-L240=>N3100B-L240 修正SMA螺紋規格	2013/05/23	



JYE BAO P/N	L CM (INCH)	L1 FT (MM)
A95N30-L240-15	15 (5.906)	0.417 (127.0)
A95N30-L240-30	30 (11.811)	0.909 (277.0)
A95N30-L240-50	50 (19.685)	1.565 (477.0)
A95N30-L240-100	100 (39.370)	3.205 (977.0)
A95N30-L240-150	150 (59.055)	4.846 (1477.0)
A95N30-L240-200	200 (78.740)	6.486 (1977.0)
A95N30-L240-XXX	CUSTOM LENGTH IN CM	- - -



MOUNTING HOLE

4	N3100B-L240	N PLUG	1	EA
3	G5(F)-8.0MM-BLACK	TUBE	0.04	M
2	JB Y240	CABLE	L1 (SEE TABLE)	FT
1	SMA9105-L240	SMA R/P JACK	1	EA
NO.	PARTS NO.	DESCRIPTION	Q'TY	U/M

LENGTH TOLERANCE IS ±1.5% OR ±10MM, WHICHEVER IS GREATER.	STANDARD	REV A	UNIT CM(INCH)	JYE BAO CO., LTD. TAIPEI TAIWAN
	APPROVED	DATE	DESCRIPTION CABLE ASSEMBLY SMA R/P JACK FOR BULKHEAD TO N PLUG	
	CHECKED	DATE	DESCRIPTION CABLE ASSEMBLY SMA R/P JACK FOR BULKHEAD TO N PLUG	
	DRAWING Albert	DATE	JYE BAO DRAWING NO. A95N30-L240-XXX	