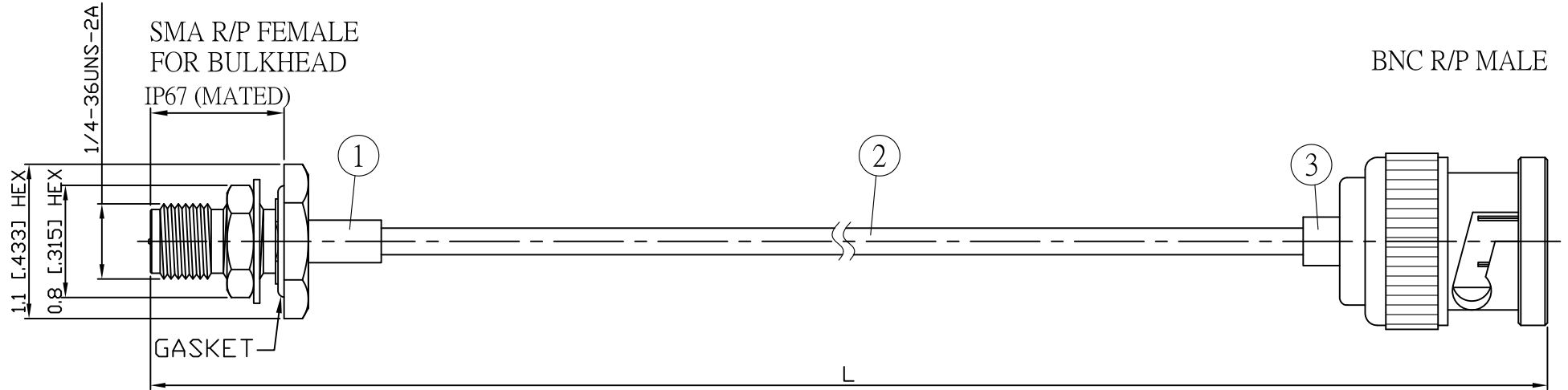
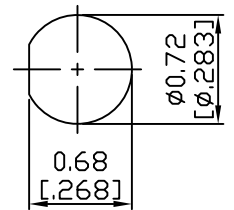


NO.	COMPONENTS	IMPEDANCE
1	SMA REVERSE POLARITY FEMALE FOR BULKHEAD	50 OHM
2	.085" TIN PLATED SEMI-RIGID CABLE (TIN PLATED RG405)	50 OHM
3	BNC REVERSE POLARITY MALE	50 OHM

REVISION			
REV.	DESCRIPTON	DATE	APPROVED
-	INITIAL RELEASE	2012/08/15	
A	修正SMA螺紋規格	2013/10/01	



JYE BAO P/N	L CM (INCH)	L1 FT (MM)
A95B60-85T-15	15 (5.906)	0.443 (135.0)
A95B60-85T-30	30 (11.811)	0.915 (279.0)
A95B60-85T-50	50 (19.685)	1.572 (479.0)
A95B60-85T-100	100 (39.370)	3.212 (979.0)
A95B60-85T-150	150 (59.055)	4.852 (1479.0)
A95B60-85T-200	200 (78.740)	6.493 (1979.0)
A95B60-85T-XXX	CUSTOM LENGTH IN CM	- - -



MOUNTING HOLE

LENGTH TOLERANCE IS $\pm 1.5\%$ OR $\pm 10\text{MM}$ , WHICHEVER IS GREATER.				STANDARD	REV A	UNIT CM(INCH)	<b>JYE BAO CO., LTD.</b> TAIPEI TAIWAN	
				APPROVED				DATE
				CHECKED				DATE
				DRAWING Albert				DATE
3	BNC6300-0085	BNC R/P PLUG	1	EA	DESCRIPTION CABLE ASSEMBLY SMA R/P JACK FOR BULKHEAD TO BNC R/P PLUG		JYE BAO DRAWING NO. A95B60-85T-XXX	
2	.085TIN-W-P-50	CABLE	L1 (SEE TABLE)	FT	DATE			
1	SMA9305A-0085	SMA R/P JACK	1	EA	DATE			
NO.	PARTS NO.	DESCRIPTION	Q'TY	U/M				