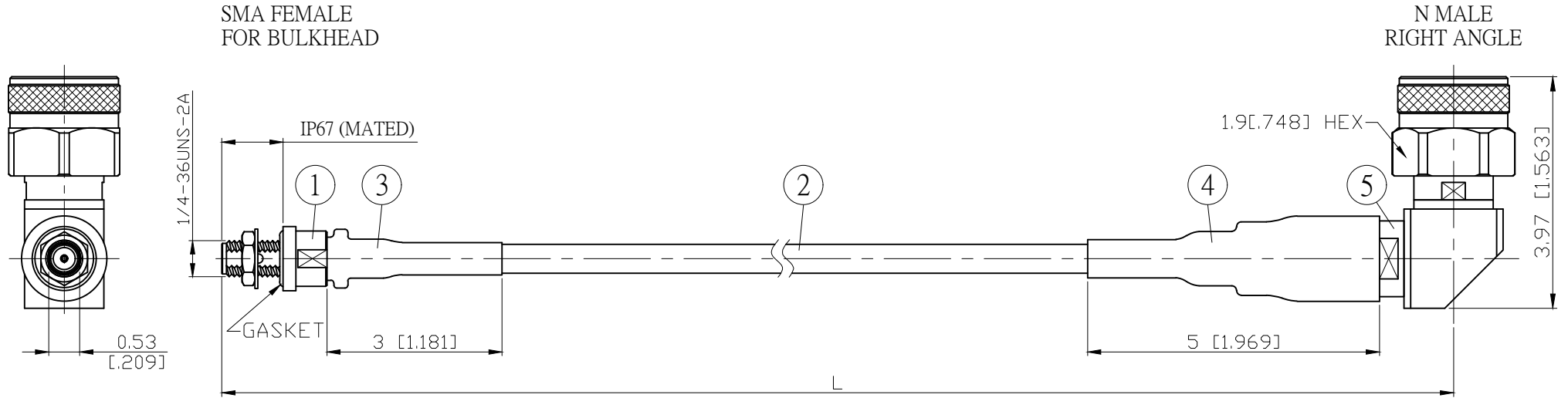


NO.	COMPONENTS	IMPEDANCE
1	SMA FEMALE FOR BULKHEAD	50 OHM
2	5005	50 OHM
3	HEAT SHRINKING TUBE	
4	ADHESIVE HEAT SHRINKING TUBE	
5	N MALE RIGHT ANGLE	50 OHM

REVISION			
REV.	DESCRIPTON	DATE	APPROVED
-	INITIAL RELEASE	2020/12/30	

## TEST LEAD WITH EXTRA STURDY CABLE / CONNECTOR CONNECTION.



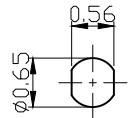
L CM (INCH)	L1 M (MM)
50 (19.685)	0.467 (466.5)
100 (39.370)	0.967 (966.5)
150 (59.055)	1.467 (1466.5)
200 (78.740)	1.967 (1966.5)
Custom length in CM	- - -

Spec	Phase stability vs bending <sup>(1)</sup>	Amplitude stability vs bending <sup>(2)</sup>	Max VSWR	Max IL	Flexure life cycle <sup>(3)</sup>
3GHz	±0.3° typ / ±0.5° max	±0.01dB typ / ±0.02dB max	1.15 : 1	≤ (0.0055dB/cm*Lcm)+0.15dB	≥ 10000
6GHz	±0.5° typ / ±1.0° max	±0.02dB typ / ±0.04dB max	1.20 : 1	≤ (0.0075dB/cm*Lcm)+0.20dB	
12.4GHz	±0.75° typ / ±1.5° max	±0.03dB typ / ±0.05dB max	1.25 : 1	≤ (0.0106dB/cm*Lcm)+0.25dB	
18GHz	±1.0° typ / ±2.0° max	±0.05dB typ / ±0.10dB max	1.30 : 1	≤ (0.0132dB/cm*Lcm)+0.30dB	

- Notes:  
 1. Operating Temp.: -55°C / +125°C  
 2. Static bend radius 16mm  
 3. Dynamic bend radius 70mm  
 4. RoHS Compliant

- (1) Per IEC 60966-1, section 8.6, method 1  
 (2) Per IEC 60966-1, section 8.4  
 (3) Per IEC 60966-1, section 9.3

MOUNTING HOLE  
(UNIT:CM)



NO.	PARTS NO.	DESCRIPTION	Q'TY	U/M	STANDARD	REV	UNIT CM(INCH)	JYE BAO CO., LTD.
5	N32SHS-M5005	N PLUG R/A	1	EA	APPROVED	-	DATE	TAIPEI TAIWAN
4	AIS-15MM-BLACK	TUBE	0.05	M	CHECKED		DATE	DESCRIPTION CABLE ASSEMBLY SMA JACK FOR BULKHEAD TO N PLUG R/A
3	G5(F)-10MM-BLACK	TUBE	0.03	M	DRAWING		DATE	JYE BAO DRAWING NO.
2	5005	CABLE	SEE TABLE L1	M				A85N39-5005-18GXXX
1	SMA8205S-L142	SMA JACK	1	EA				
					<i>Albert</i>			