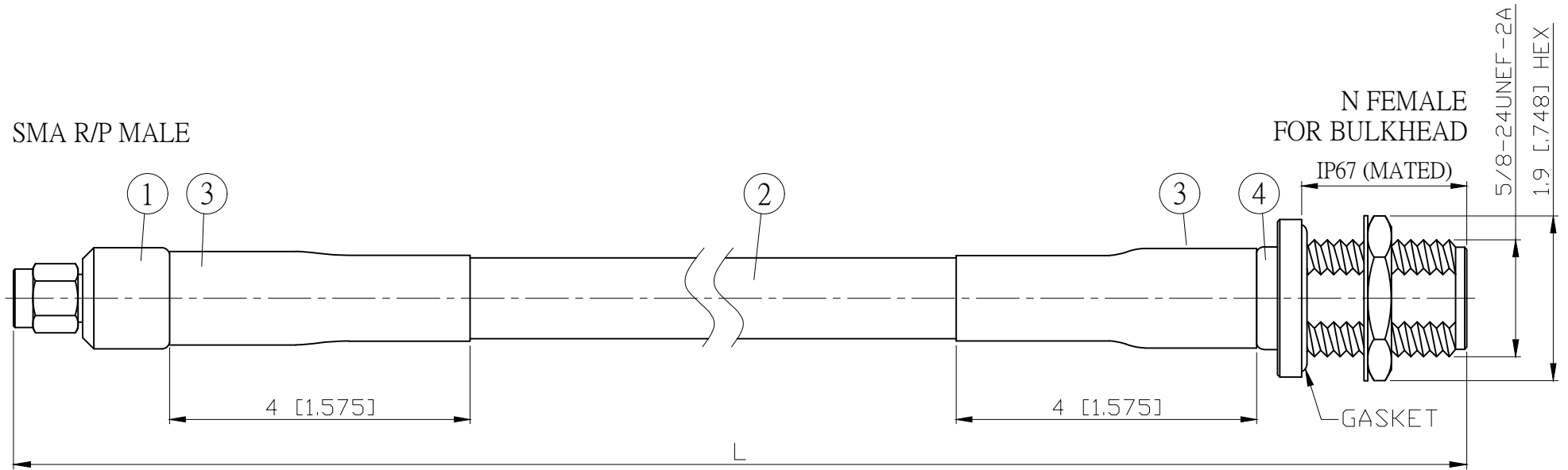
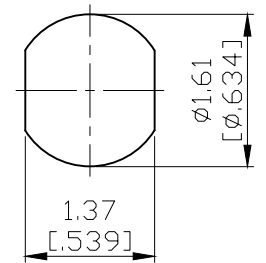


| NO. | COMPONENTS | IMPEDANCE |
|-----|---------------------------|-----------|
| 1 | SMA REVERSE POLARITY MALE | 50 OHM |
| 2 | RG214 | 50 OHM |
| 3 | HEAT SHRINKING TUBE | |
| 4 | N FEMALE FOR BULKHEAD | 50 OHM |

| REVISION | | | |
|----------|-----------------|------------|----------|
| REV. | DESCRIPTION | DATE | APPROVED |
| - | INITIAL RELEASE | 2011/03/15 | |



| JYE BAO P/N | L CM (INCH) | L1 FT (MM) |
|----------------|------------------------|----------------|
| A60N85-214-15 | 15 (5.906) | 0.385 (117.5) |
| A60N85-214-30 | 30 (11.811) | 0.878 (267.5) |
| A60N85-214-50 | 50 (19.685) | 1.534 (467.5) |
| A60N85-214-100 | 100 (39.370) | 3.174 (967.5) |
| A60N85-214-150 | 150 (59.055) | 4.815 (1467.5) |
| A60N85-214-200 | 200 (78.740) | 6.455 (1967.5) |
| A60N85-214-XXX | CUSTOM LENGTH IN CM | - - - |



MOUNTING HOLE

| | | | | |
|-----|------------------|--------------|----------------|-----|
| 4 | N8105-0214 | N JACK | 1 | EA |
| 3 | G5(F)-20MM-BLACK | TUBE | 0.08 | M |
| 2 | RG214 | CABLE | L1 (SEE TABLE) | FT |
| 1 | SMA6100-0214 | SMA R/P PLUG | 1 | EA |
| NO. | PARTS NO. | DESCRIPTION | QTY | U/M |

| DIMENSION ARE MILLIMETERS UNLESS OTHERWISE SPECIFIED TOLERANCES (UNIT: MM) | STANDARD | REV | UNIT CM(INCH) |
|--|-------------------|-----|------------------|
| LENGTH TOLERANCE IS ±1.5% OR ±10MM, WHICHEVER IS GREATER. | APPROVED | - | DATE |
| | CHECKED | | DATE |
| | DRAWING Albert | | DATE |

JYE BAO CO., LTD.

TAIPEI TAIWAN

DESCRIPTION CABLE ASSEMBLY SMA R/P PLUG
TO N JACK FOR BULKHEAD

JYE BAO DRAWING NO.

A60N85-214-XXX