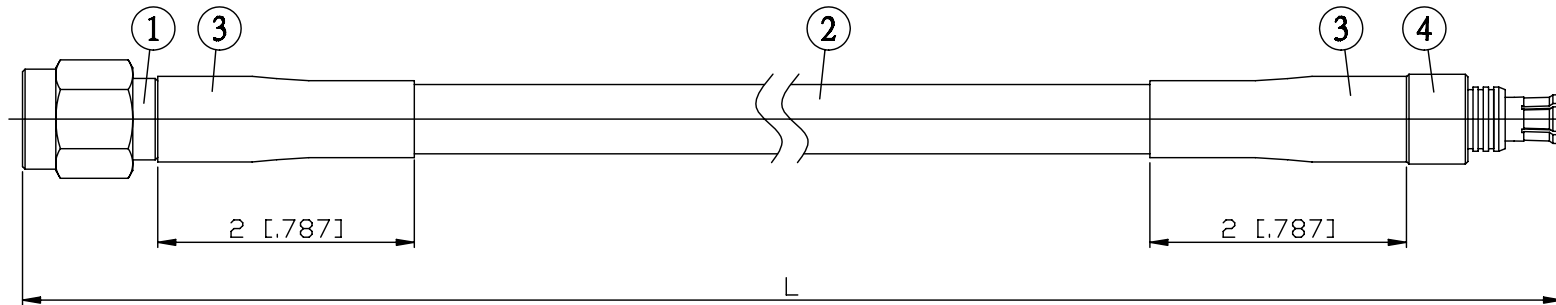


| NO. | COMPONENTS                | IMPEDANCE |
|-----|---------------------------|-----------|
| 1   | SMA REVERSE POLARITY MALE | 50 OHM    |
| 2   | RG223                     | 50 OHM    |
| 3   | HEAT SHRINKING TUBE       |           |
| 4   | MCX MALE                  | 50 OHM    |

SMA R/P MALE

MCX MALE



| JYE BAO P/N    | L<br>CM (INCH)         |
|----------------|------------------------|
| A60D30-223-15  | 15 (5.906)             |
| A60D30-223-30  | 30 (11.811)            |
| A60D30-223-50  | 50 (19.685)            |
| A60D30-223-100 | 100 (39.370)           |
| A60D30-223-150 | 150 (59.055)           |
| A60D30-223-200 | 200 (78.740)           |
| A60D30-223-XXX | CUSTOM<br>LENGTH IN CM |

|  |  |
|--|--|
| <p>LENGTH TOLERANCE<br/>IS ±1.5% OR ±10MM,<br/>WHICHEVER IS<br/>GREATER.</p> | <p><b>JYE BAO CO., LTD.</b><br/>TAIPEI TAIWAN</p>              |
|  | <p>DESCRIPTION<br/>CABLE ASSEMBLY SMA R/P PLUG TO MCX PLUG</p> |
|  | <p>JYE BAO DRAWING NO.<br/>A60D30-223-XXX</p>                  |