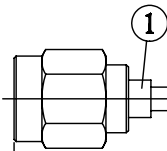


NO.	COMPONENTS	IMPEDANCE
1	SMA REVERSE POLARITY MALE	50 OHM
2	.085" HANDBENDABLE CABLE (= JYEBAO P/N .085SRF-W-P-50)	50 OHM
3	BNC REVERSE POLARITY FEMALE FOR BULKHEAD	50 OHM

SMA R/P MALE



1

2

3

BNC R/P FEMALE  
FOR BULKHEAD

GASKET

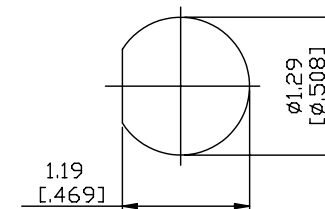
1/2-28UNEF-2A

1.6 [.630] HEX

1.75 [.689] HEX

L

JYE BAO P/N	L CM (INCH)
A60B95-85S-15	15 (5.906)
A60B95-85S-30	30 (11.811)
A60B95-85S-50	50 (19.685)
A60B95-85S-100	100 (39.370)
A60B95-85S-150	150 (59.055)
A60B95-85S-200	200 (78.740)
A60B95-85S-XXX	CUSTOM LENGTH IN CM



MOUNTING HOLE

<p>LENGTH TOLERANCE IS ±1.5% OR ±10MM, WHICHEVER IS GREATER.</p>	<p><b>JYE BAO CO., LTD.</b></p> <p>TAIPEI TAIWAN</p>
	<p>DESCRIPTION CABLE ASSEMBLY SMA R/P PLUG TO BNC R/P JACK FOR BULKHEAD</p>
	<p>JYE BAO DRAWING NO. A60B95-85S-XXX</p>