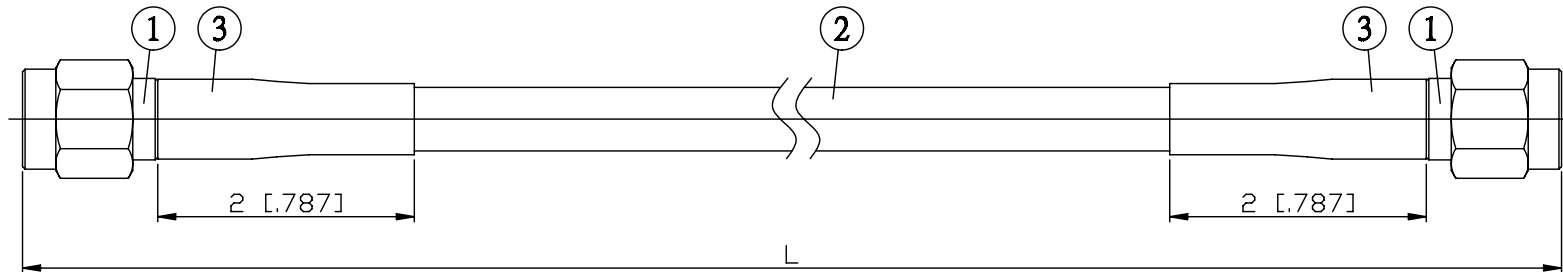


| NO. | COMPONENTS                | IMPEDANCE |
|-----|---------------------------|-----------|
| 1   | SMA REVERSE POLARITY MALE | 50 OHM    |
| 2   | RG58                      | 50 OHM    |
| 3   | HEAT SHRINKING TUBE       |           |

SMA R/P MALE

SMA R/P MALE



| JYE BAO P/N   | L<br>CM (INCH)         |
|---------------|------------------------|
| A60A60-58-15  | 15 (5.906)             |
| A60A60-58-30  | 30 (11.811)            |
| A60A60-58-50  | 50 (19.685)            |
| A60A60-58-100 | 100 (39.370)           |
| A60A60-58-150 | 150 (59.055)           |
| A60A60-58-200 | 200 (78.740)           |
| A60A60-58-XXX | CUSTOM<br>LENGTH IN CM |

|   |  |
|---|--|
| LENGTH TOLERANCE<br>IS $\pm 1.5\%$ OR $\pm 10\text{MM}$ ,<br>WHICHEVER IS<br>GREATER. | <b>JYE BAO CO., LTD.</b><br>TAIPEI TAIWAN                  |
|   | DESCRIPTION<br>CABLE ASSEMBLY SMA R/P PLUG TO SMA R/P PLUG |
|   | JYE BAO DRAWING NO.<br>A60A60-58-XXX                       |