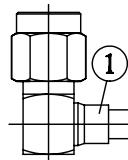


NO.	COMPONENTS	IMPEDANCE
1	SMA MALE RIGHT ANGLE	50 OHM
2	.141" TIN PLATED SEMI-RIGID CABLE (TIN PLATED RG402)	50 OHM
3	TNC REVERSE POLARITY FEMALE FOR BULKHEAD	50 OHM

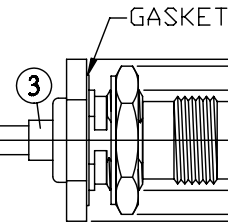
SMA MALE
RIGHT ANGLE



1

2

TNC R/P FEMALE
FOR BULKHEAD



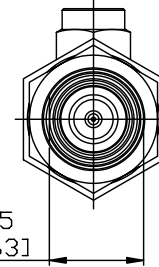
GASKET

1/2-28UNEF-2A

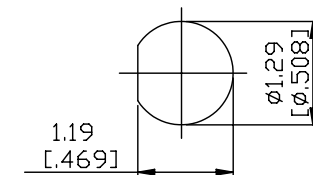
1.6 [L.630] HEX

1.75 [L.689] HEX

1.175
[.463]



JYE BAO P/N	L CM (INCH)
A39T95-141T-15	15 (5.906)
A39T95-141T-30	30 (11.811)
A39T95-141T-50	50 (19.685)
A39T95-141T-100	100 (39.370)
A39T95-141T-150	150 (59.055)
A39T95-141T-200	200 (78.740)
A39T95-141T-XXX	CUSTOM LENGTH IN CM



1.19
[.469]

1.29
[.508]

MOUNTING HOLE

<p>LENGTH TOLERANCE IS ±1.5% OR ±10MM, WHICHEVER IS GREATER.</p>	<p>JYE BAO CO., LTD.</p>		
	<p>TAIPEI TAIWAN</p>		
	<p>DESCRIPTION</p>	<p>CABLE ASSEMBLY SMA PLUG R/A TO TNC R/P JACK FOR BULKHEAD</p>	
	<p>JYE BAO DRAWING NO.</p>	<p>A39T95-141T-XXX</p>	