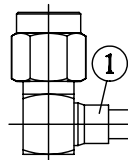


NO.	COMPONENTS	IMPEDANCE
1	SMA MALE RIGHT ANGLE	50 OHM
2	.141" HANDBENDABLE CABLE (= JYEBAO P/N .141SRF-W-P-50)	50 OHM
3	TNC FEMALE FOR BULKHEAD	50 OHM

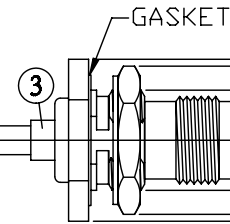
SMA MALE
RIGHT ANGLE



1

2

TNC FEMALE
FOR BULKHEAD



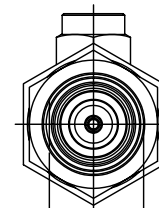
GASKET

1/2-28UNEF-2A

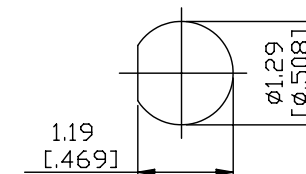
1.6 [L.630] HEX

1.75 [L.689] HEX

1.175
[.463]



JYE BAO P/N	L CM (INCH)
A39T85-141S-15	15 (5.906)
A39T85-141S-30	30 (11.811)
A39T85-141S-50	50 (19.685)
A39T85-141S-100	100 (39.370)
A39T85-141S-150	150 (59.055)
A39T85-141S-200	200 (78.740)
A39T85-141S-XXX	CUSTOM LENGTH IN CM



1.19
[.469]

ø1.29
[ø.508]

MOUNTING HOLE

<p>LENGTH TOLERANCE IS ±1.5% OR ±10MM, WHICHEVER IS GREATER.</p>	<p>JYE BAO CO., LTD.</p> <p>TAIPEI TAIWAN</p>
	<p>DESCRIPTION CABLE ASSEMBLY SMA PLUG R/A TO TNC JACK FOR BULKHEAD</p>
	<p>JYE BAO DRAWING NO. A39T85-141S-XXX</p>