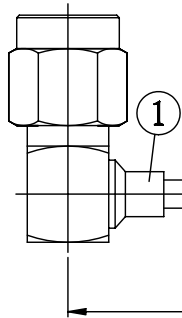


NO.	COMPONENTS	IMPEDANCE
1	SMA MALE RIGHT ANGLE	50 OHM
2	.085" HANDBENDABLE CABLE (= JYEBAO P/N .085SRF-W-P-50)	50 OHM
3	SMB FEMALE FOR BULKHEAD	50 OHM

SMA MALE
RIGHT ANGLE



2

L

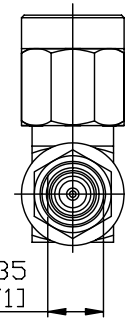
SMB FEMALE
FOR BULKHEAD

3

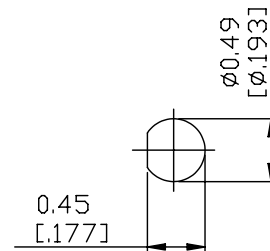
N \square 1.10-32UNEF-2A

0.6 [2.36] HEX

0.435
[1.71]



JYE BAO P/N	L CM (INCH)
A39S85-85S-15	15 (5.906)
A39S85-85S-30	30 (11.811)
A39S85-85S-50	50 (19.685)
A39S85-85S-100	100 (39.370)
A39S85-85S-150	150 (59.055)
A39S85-85S-200	200 (78.740)
A39S85-85S-XXX	CUSTOM LENGTH IN CM



MOUNTING HOLE

<p>LENGTH TOLERANCE IS $\pm 1.5\%$ OR $\pm 10\text{MM}$, WHICHEVER IS GREATER.</p>	<p>JYE BAO CO., LTD.</p> <p>TAIPEI TAIWAN</p>	
	DESCRIPTION	CABLE ASSEMBLY SMA PLUG R/A TO SMB FEMALE FOR BULKHEAD
	JYE BAO DRAWING NO.	A39S85-85S-XXX