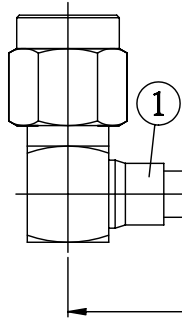


NO.	COMPONENTS	IMPEDANCE
1	SMA MALE RIGHT ANGLE	50 OHM
2	.141" HANDBENDABLE CABLE (= JYEBAO P/N .141SRF-W-P-50)	50 OHM
3	SMB FEMALE FOR BULKHEAD	50 OHM

SMA MALE
RIGHT ANGLE

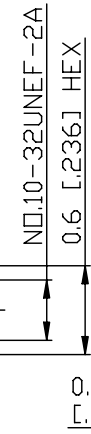


1

2

SMB FEMALE
FOR BULKHEAD

3



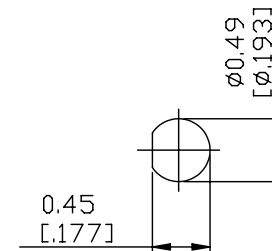
N \square 1.0-32UNEF-2A

0.6 [2.36] HEX

0.435
[.171]

L

JYE BAO P/N	L CM (INCH)
A39S85-141S-15	15 (5.906)
A39S85-141S-30	30 (11.811)
A39S85-141S-50	50 (19.685)
A39S85-141S-100	100 (39.370)
A39S85-141S-150	150 (59.055)
A39S85-141S-200	200 (78.740)
A39S85-141S-XXX	CUSTOM LENGTH IN CM



0.45
[.177]

ϕ 0.49
[ϕ .193]

MOUNTING HOLE

LENGTH TOLERANCE IS $\pm 1.5\%$ OR $\pm 10\text{MM}$, WHICHEVER IS GREATER.	JYE BAO CO., LTD. TAIPEI TAIWAN	
	DESCRIPTION	CABLE ASSEMBLY SMA PLUG R/A TO SMB FEMALE FOR BULKHEAD
	JYE BAO DRAWING NO.	A39S85-141S-XXX