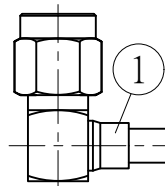


| NO. | COMPONENTS | IMPEDANCE |
|-----|--|-----------|
| 1 | SMA MALE RIGHT ANGLE | 50 OHM |
| 2 | .141" TIN PLATED SEMI-RIGID CABLE (TIN PLATED RG402) | 50 OHM |
| 3 | N FEMALE FOR BULKHEAD | 50 OHM |

| REVISION | | | |
|----------|-----------------|------------|----------|
| REV. | DESCRIPTION | DATE | APPROVED |
| - | INITIAL RELEASE | 2011/03/15 | |

SMA MALE
RIGHT ANGLE



1

2

3

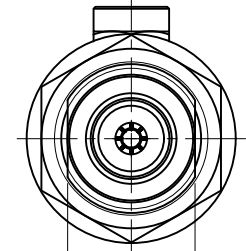
N FEMALE
FOR BULKHEAD

IP67 (MATED)

5/8-24UNEF-2A

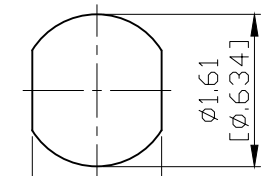
1.9 [7.48] HEX

GASKET



1.35

[5.31]



ø1.61

[ø.634]

1.37

[5.39]

MOUNTING HOLE

| JYE BAO P/N | L CM (INCH) | L1 FT (MM) |
|-----------------|------------------------|----------------|
| A39N85-141T-15 | 15 (5.906) | 0.436 (133.0) |
| A39N85-141T-30 | 30 (11.811) | 0.928 (283.0) |
| A39N85-141T-50 | 50 (19.685) | 1.585 (483.0) |
| A39N85-141T-100 | 100 (39.370) | 3.225 (983.0) |
| A39N85-141T-150 | 150 (59.055) | 4.865 (1483.0) |
| A39N85-141T-200 | 200 (78.740) | 6.506 (1983.0) |
| A39N85-141T-XXX | CUSTOM LENGTH IN CM | - - - |

| NO. | PARTS NO. | DESCRIPTION | QTY | U/M |
|-----|----------------|--------------|----------------|-----|
| 3 | N8305P-0141 | N JACK | 1 | EA |
| 2 | .141TIN-W-P-50 | CABLE | L1 (SEE TABLE) | FT |
| 1 | SMA3300-9141 | SMA PLUG R/A | 1 | EA |

| DIMENSION ARE MILLIMETERS UNLESS OTHERWISE SPECIFIED TOLERANCES (UNIT: MM) | | STANDARD | REV | UNIT |
|--|--|----------|-----|----------|
| APPROVED | | | - | CM(INCH) |
| CHECKED | | | | DATE |
| DRAWING | | Albert | | DATE |

| JYE BAO CO., LTD. | |
|---------------------|--|
| TAIPEI TAIWAN | |
| DESCRIPTION | CABLE ASSEMBLY SMA PLUG R/A TO N JACK FOR BULKHEAD |
| JYE BAO DRAWING NO. | A39N85-141T-XXX |

LENGTH TOLERANCE IS ±1.5% OR ±10MM, WHICHEVER IS GREATER.