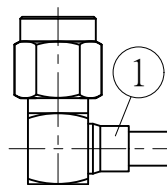


NO.	COMPONENTS	IMPEDANCE
1	SMA MALE RIGHT ANGLE .141" HANDBENDABLE CABLE	50 OHM
2	(= JYEBAO P/N .141SRF-W-P-50)	50 OHM
3	N FEMALE FOR BULKHEAD	50 OHM

REVISION			
REV.	DESCRIPTION	DATE	APPROVED
-	INITIAL RELEASE	2011/03/15	

SMA MALE
RIGHT ANGLE



1

2

3

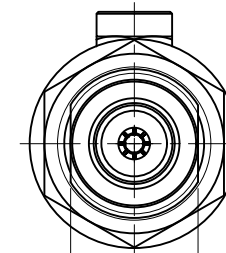
N FEMALE
FOR BULKHEAD

IP67 (MATED)

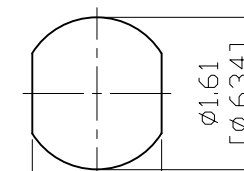
GASKET

5/8-24UNEF-2A

1.9 [.748] HEX



1.35
[.531]



ø1.61
[ø.634]

1.37
[.539]

MOUNTING HOLE

JYE BAO P/N	L CM (INCH)	L1 FT (MM)
A39N85-141S-15	15 (5.906)	0.436 (133.0)
A39N85-141S-30	30 (11.811)	0.928 (283.0)
A39N85-141S-50	50 (19.685)	1.585 (483.0)
A39N85-141S-100	100 (39.370)	3.225 (983.0)
A39N85-141S-150	150 (59.055)	4.865 (1483.0)
A39N85-141S-200	200 (78.740)	6.506 (1983.0)
A39N85-141S-XXX	CUSTOM LENGTH IN CM	- - -

NO.	PARTS NO.	DESCRIPTION	QTY	U/M
3	N8305P-0141	N JACK	1	EA
2	.141SRF-W-P-50	CABLE	L1 (SEE TABLE)	FT
1	SMA3300-9141	SMA PLUG R/A	1	EA

DIMENSION ARE MILLIMETERS
UNLESS OTHERWISE SPECIFIED
TOLERANCES (UNIT: MM)

LENGTH TOLERANCE
IS ±1.5% OR ±10MM,
WHICHEVER IS
GREATER.

STANDARD	REV	UNIT
	-	CM(INCH)
APPROVED		DATE
CHECKED		DATE
DRAWING	Albert	DATE

JYE BAO CO., LTD.	
TAIPEI TAIWAN	
DESCRIPTION	CABLE ASSEMBLY SMA PLUG R/A TO N JACK FOR BULKHEAD
JYE BAO DRAWING NO.	A39N85-141S-XXX