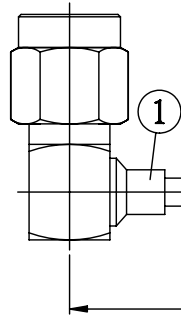


NO.	COMPONENTS	IMPEDANCE
1	SMA MALE RIGHT ANGLE	50 OHM
2	.085" HANDBENDABLE CABLE (= JYEBAO P/N .085SRF-W-P-50)	50 OHM
3	SMC FEMALE FOR BULKHEAD	50 OHM

SMA MALE
RIGHT ANGLE



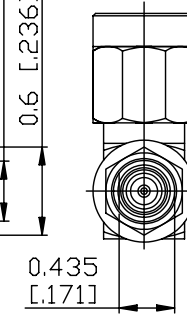
1

2

3

SMC FEMALE
FOR BULKHEAD

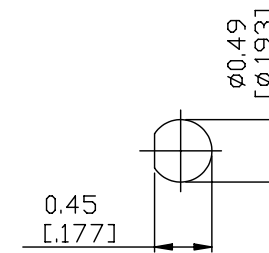
NO.10-32UNF-2A
0.6 [2.36] HEX



0.435
[1.71]

L

JYE BAO P/N	L CM (INCH)
A39MC85-85S-15	15 (5.906)
A39MC85-85S-30	30 (11.811)
A39MC85-85S-50	50 (19.685)
A39MC85-85S-100	100 (39.370)
A39MC85-85S-150	150 (59.055)
A39MC85-85S-200	200 (78.740)
A39MC85-85S-XXX	CUSTOM LENGTH IN CM



0.45
[1.77]

ø0.49
[ø.193]

MOUNTING HOLE

LENGTH TOLERANCE IS ±1.5% OR ±10MM, WHICHEVER IS GREATER.	JYE BAO CO., LTD. TAIPEI TAIWAN
	DESCRIPTION CABLE ASSEMBLY SMA PLUG R/A TO SMC FEMALE FOR BULKHEAD
	JYE BAO DRAWING NO. A39MC85-85S-XXX