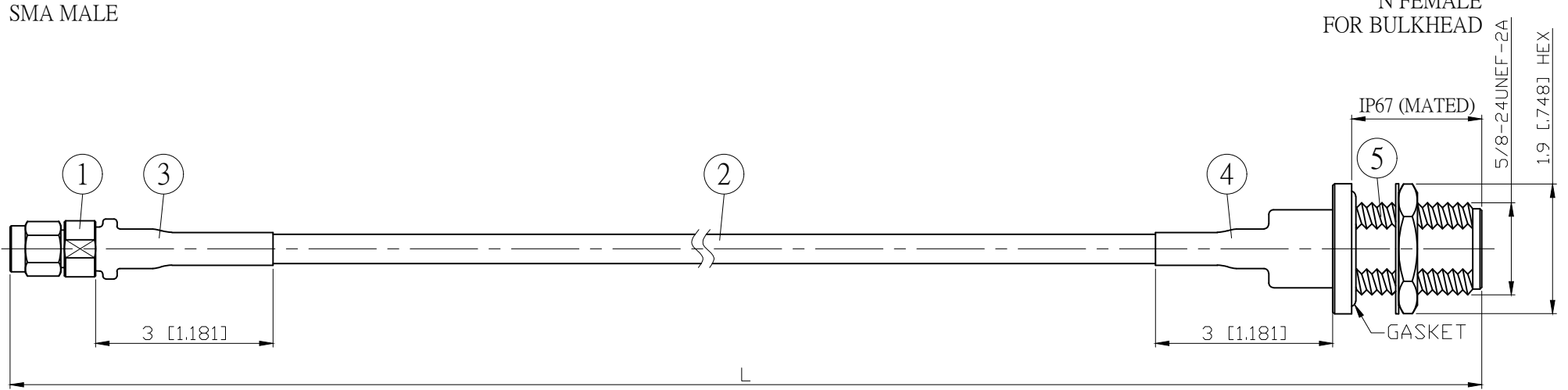


NO.	COMPONENTS	IMPEDANCE
1	SMA MALE	50 OHM
2	5005	50 OHM
3	HEAT SHRINKING TUBE	
4	ADHESIVE HEAT SHRINKING TUBE	
5	N FEMALE FOR BULKHEAD	50 OHM

REVISION			
REV.	DESCRIPTON	DATE	APPROVED
-	INITIAL RELEASE	2020/12/30	

TEST LEAD WITH EXTRA STURDY CABLE / CONNECTOR CONNECTION.

SMA MALE



L CM (INCH)	L1 M (MM)
50 (19.685)	0.475 (475.0)
100 (39.370)	0.975 (975.0)
150 (59.055)	1.475 (1475.0)
200 (78.740)	1.975 (1975.0)
Custom length in CM	- - -

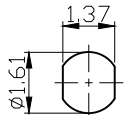
Spec	Phase stability vs bending ⁽¹⁾	Amplitude stability vs bending ⁽²⁾	Max VSWR	Max IL	Flexure life cycle ⁽³⁾
3GHz	±0.3° typ / ±0.5° max	±0.01dB typ / ±0.02dB max	1.15 : 1	≤ (0.0055dB/cm*Lcm)+0.15dB	≥ 10000
6GHz	±0.5° typ / ±1.0° max	±0.02dB typ / ±0.04dB max	1.20 : 1	≤ (0.0075dB/cm*Lcm)+0.20dB	
12.4GHz	±0.75° typ / ±1.5° max	±0.03dB typ / ±0.05dB max	1.25 : 1	≤ (0.0106dB/cm*Lcm)+0.25dB	
18GHz	±1.0° typ / ±2.0° max	±0.05dB typ / ±0.10dB max	1.30 : 1	≤ (0.0132dB/cm*Lcm)+0.30dB	

Notes:

- Operating Temp.: -55°C / +125°C
- Static bend radius 16mm
- Dynamic bend radius 70mm
- RoHS Compliant

- Per IEC 60966-1, section 8.6, method 1
- Per IEC 60966-1, section 8.4
- Per IEC 60966-1, section 9.3

MOUNTING HOLE
(UNIT:CM)



NO.	PARTS NO.	DESCRIPTION	Q'TY	U/M	STANDARD	REV	UNIT CM(INCH)	JYE BAO CO., LTD.
5	N8205S-L142	N JACK	1	EA	APPROVED	-		TAIPEI TAIWAN
4	AIS-12.7MM-BLACK	TUBE	0.03	M	CHECKED		DATE	
3	G5(F)-10MM-BLACK	TUBE	0.03	M	DRAWING		DATE	DESCRIPTION CABLE ASSEMBLY SMA PLUG TO N JACK FOR BULKHEAD
2	5005	CABLE	SEE TABLE L1	M				JYE BAO DRAWING NO.
1	SMA32NP-L142	SMA PLUG	1	EA				A30N85-5005-18GXXX

LENGTH TOLERANCE
IS ±1.5% OR ±10MM,
WHICHEVER IS
GREATER.

Albert