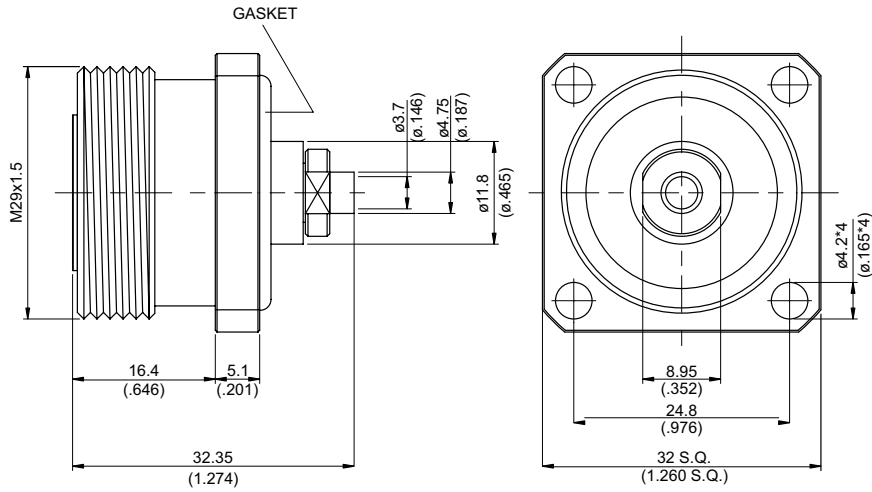
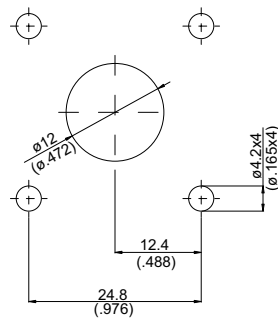


7/16-8346-0141

7/16 Jack Solder For Panel Receptacle 50Ω



MOUNTING HOLE:



Parts	Material	Plating(Micro-inch)
Contact Body	Brass	Tin-Zinc-Copper-Alloy 100 Over Copper 50
Gasket	Silicon	
Solder Ferrule	Brass	Gold 5 Over Nickel 50 Over Copper 50
Nut	Brass	Tin-Zinc-Copper-Alloy 100 Over Copper 50
Contact Pin	Phosphor Bronze	Silver 150 Over Copper 50
Insulator	Teflon	
Body	Brass	Tin-Zinc-Copper-Alloy 100 Over Copper 50

Weight: 91.87 g

Suitable Cables: Semi-rigid.141

This part number complies with RoHS.

Notice: JYEBAO reserves the right to make modifications deemed appropriate.

CABLE ASSEMBLY INSTRUCTION

7/16-8346-0141

JYE BAO CO., LTD.

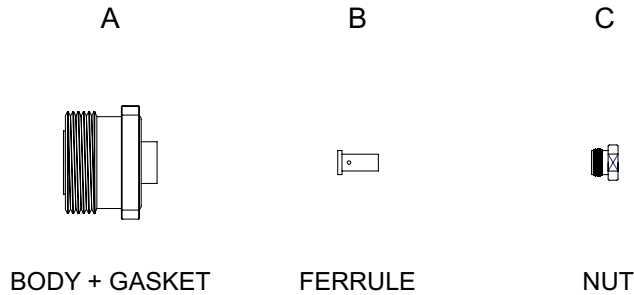



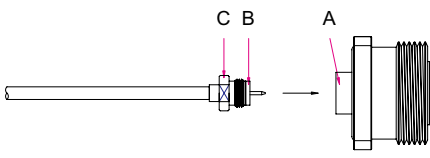


DIAGRAM	ASSEMBLY INSTRUCTION
	Step 1: STRIP AS SHOWN .
	Step 2: SHARPEN CENTER CONDUCTOR TIP.
	Step 3: SLIDE FERRULE " B " AND NUT " C " OVER CABLE AND SOLDER IN " Y " . Step 4: STRIP EXCESS TEFLON AFTER SOLDERING .
	Step 5: FINALLY SCREW " C " ON THE CONNECTOR BODY " A " .

This part number complies with RoHS.

Notice: JYEBAO reserves the right to make modifications deemed appropriate.