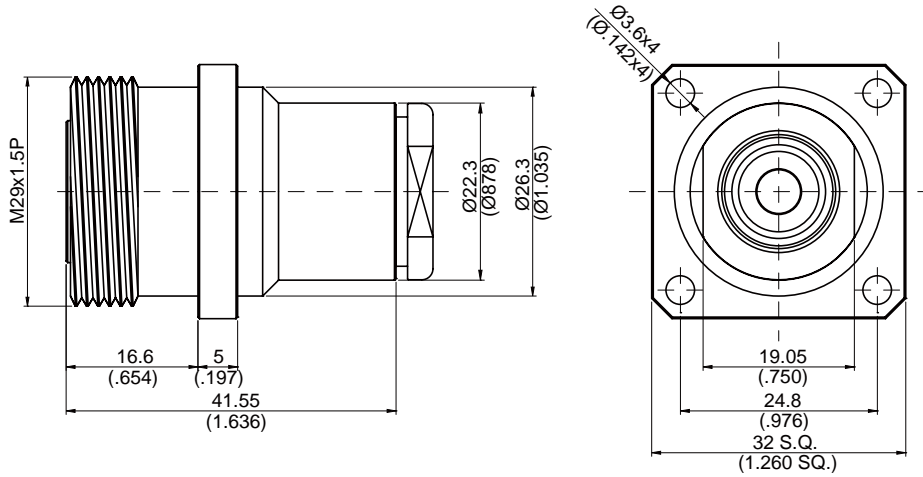
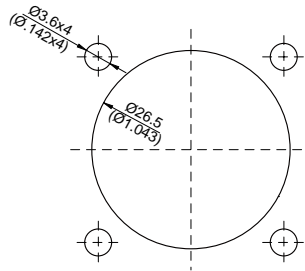


7/16-8246-0217 **7/16 Jack Clamp For Panel Receptacle 50Ω**



MOUNTING HOLE



Parts	Material	Plating(Micro-inch)
Nut	Brass	Tin-Zinc-Copper-Alloy 100 Over Copper 50
Body	Brass	Tin-Zinc-Copper-Alloy 100 Over Copper 50
Washer	Brass	Tin-Zinc-Copper-Alloy 100 Over Copper 50
Gasket	Silicon	
Contact Pin	Brass	Silver 150 Over Copper 50
Contact Pin	Phosphor Bronze	Silver 150 Over Copper 50
Insulator	Teflon	
Braid Clamp	Brass	Tin-Zinc-Copper-Alloy 100 Over Copper 50

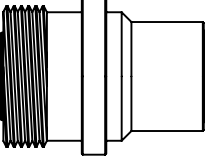
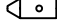




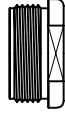
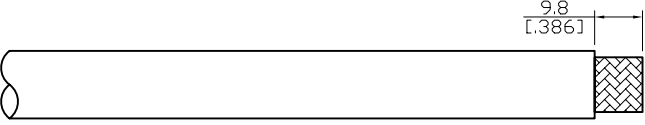
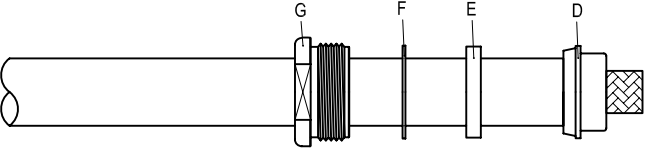
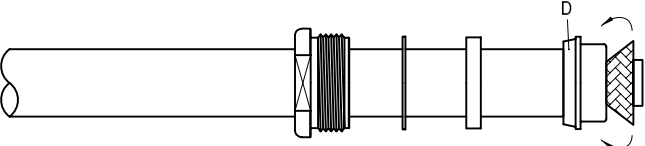
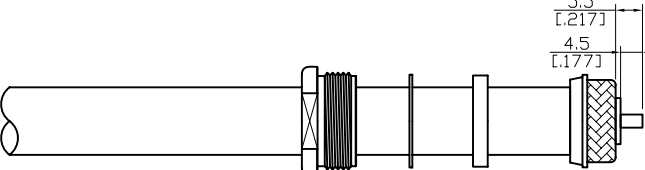
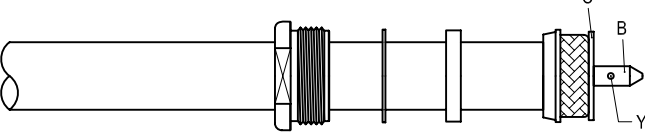
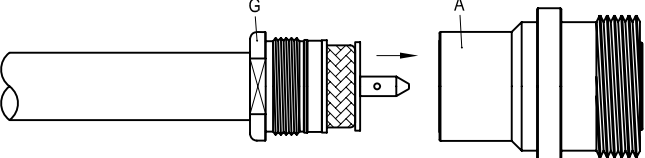
Weight:
Suitable Cables: RG217

This part number complies with RoHS.

Notice: JYEBAC reserves the right to make modifications deemed appropriate.

JYE BAO CO., LTD.

CABLE ASSEMBLY INSTRUCTION

7/16-8246-0217			DATE	2018/06/01	REV	—
A	B	C	D	E	F	G
						
BODY	CONTACT PIN	WASHER	BRAID CLAMP	GASKET	WASHER	NUT
DIAGRAM			ASSEMBLY INSTRUCTION			
			Step 1: STRIP AS SHOWN.			
			Step 2: SLIDE NUT " G " 、 WASHER " F " 、 GASKET " E " AND BRAID CLAMP " D " OVER CABLE.			
			Step 3: WRAP THE BRAIDING OVER " D " .			
			Step 4: STRIP AS SHOWN.			
			Step 5: SLIDE PREPARED CABLE INTO WASHER " C " . Step 6: PUT PIN " B " ON CENTER CONDUCTOR AND SOLDER OR CRIMP IN " Y " . (USE 3.3mm/0.130inch HEX SECTION OF INSERT-C IF CRIMPED)			
			Step 7: FINALLY SCREW NUT " G " ON THE CONNECTOR BODY " A " .			

This part number complies with RoHS.

Notice: JYEBAO reserves the right to make modifications deemed appropriate.

APPROVED

CHECKED

DRAWING

Albert